

| | | |
|--|------------------------|---|
| WAAS CH 97627 W10A | APP CRS 103° | Rwy Idg 4002 TDZE 831 Apt Elev 859 |
|--|------------------------|---|

RNAV (GPS) RWY 10

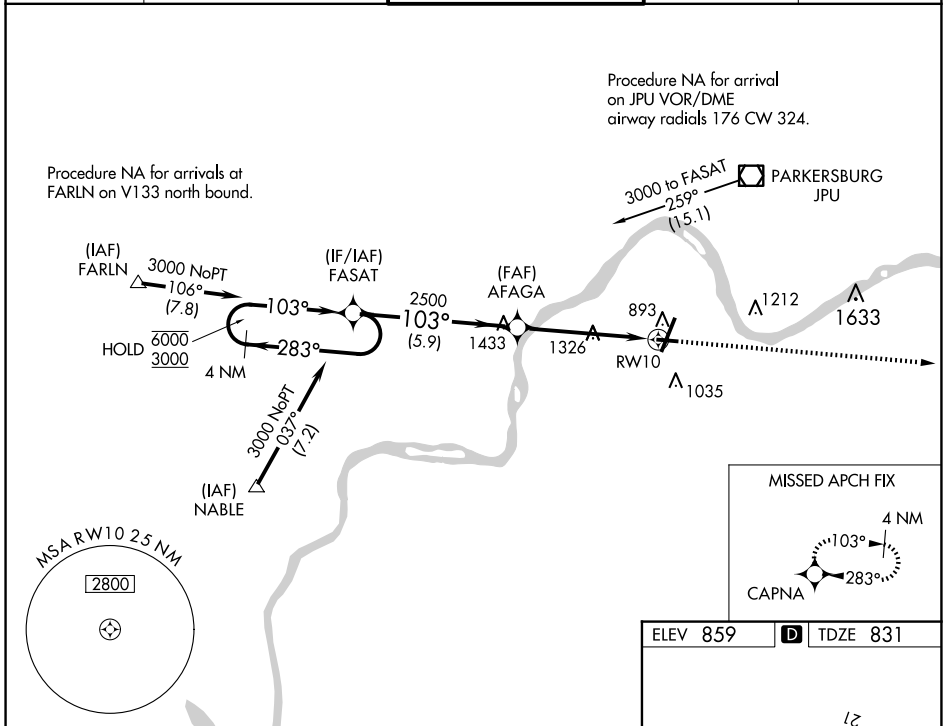
MID-OHIO VALLEY RGNL (PKB)

RNP APCH.

▼ Rwy 10 helicopter visibility reduction below 1 SM NA. When local altimeter setting not received, use Athens/Albany altimeter setting and increase all MDA 100 feet, increase visibility LP all Cats, LNAV all Cats and Circling Cat D ½ SM, and Circling Cats A/C ¼ SM. Straight-in Rwy 10 NA at night, Circling Rwy 10, 28 NA at night.

MISSED APPROACH: Climb to 3000 direct CAPNA and hold.

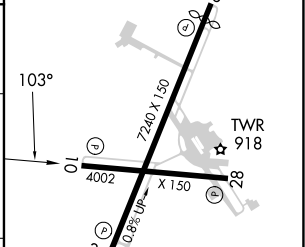
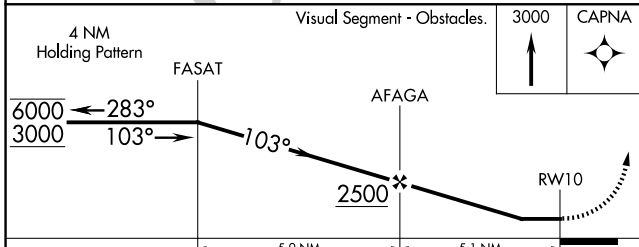
| | | | | |
|-----------------------|--|--|--------------------------|-------------------------|
| ATIS 124.35 | INDIANAPOLIS CENTER 125.55 317.475 | PARKERSBURG TOWER * 123.7 (CTAF) 257.8 | GND CON 126.45 | UNICOM 122.95 |
|-----------------------|--|--|--------------------------|-------------------------|



NE-4, 20 MAR 2025 to 17 APR 2025

NE-4, 20 MAR 2025 to 17 APR 2025

| | |
|----------|-------------------|
| ELEV 859 | D TDZE 831 |
|----------|-------------------|



| CATEGORY | A | B | C | D |
|----------|-----------------------|-------------------------|---------|--------------|
| LP MDA | 1580-1 749 (800-1) | 1580-1½ 749 (800-1¼) | 1580-2 | 749 (800-2) |
| LNAV MDA | 1600-1 769 (800-1) | 1600-1½ 769 (800-1¼) | 1600-2½ | 769 (800-2½) |
| CIRCLING | 1600-1 741 (800-1) | 1600-1½ 741 (800-1¼) | 1640-2½ | 781 (800-2½) |

HIRL Rwy 3-21 and 10-28 **1**
REIL Rwy 10 and 21 **1**
REIL Rwy 28