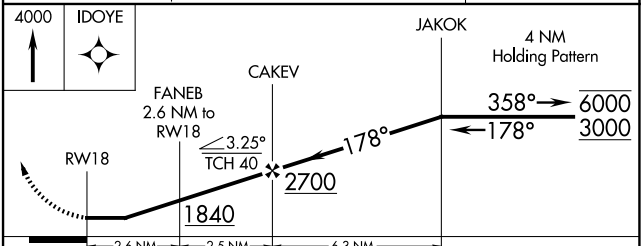
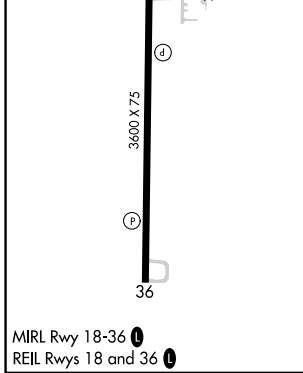
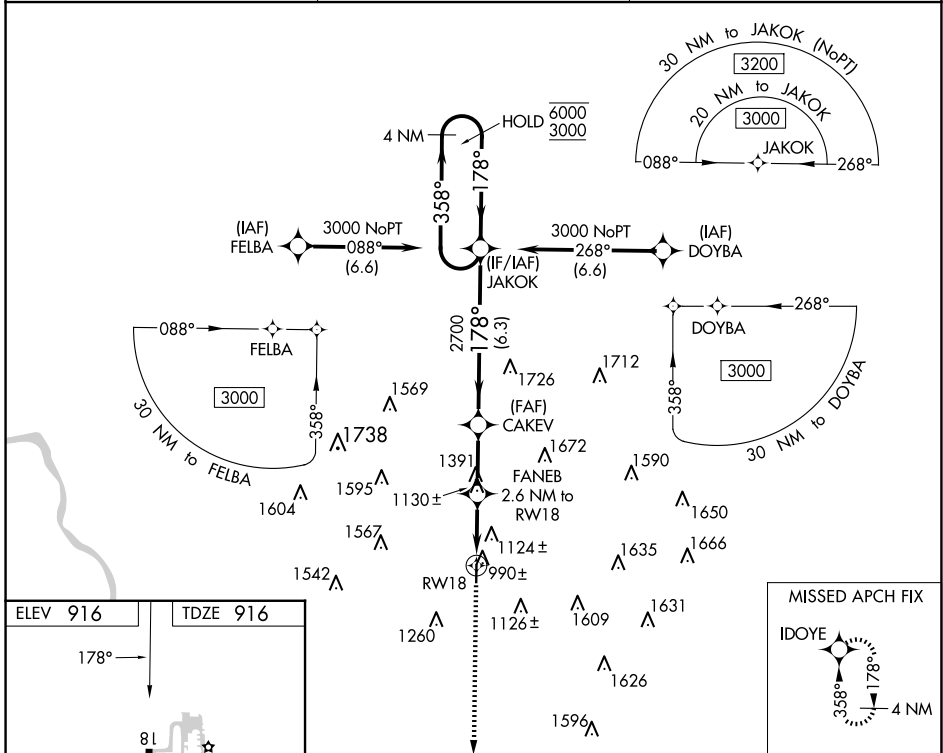


APP CRS	Rwy Idg	3600
178°	TDZE	916
	Apt Elev	916

RNAV (GPS) RWY 18

GOULD PETERSON MUNI (K57)

RNP APCH - GPS.		MISSED APPROACH: Climb to 4000 direct IDOYE and hold, continue climb-in-hold to 4000.
▽ Rwy 18 helicopter visibility reduction below 1 SM NA. ▲ NA Use Shenandoah altimeter setting; when not received, use Clarinar altimeter setting and increase all MDAs 20 feet and visibility LNAV Cat C ½ SM. Straight-in Rwy 18 NA at night, Circling Rwy 18 NA at night.		
SDA AWOS-3 125.525	MINNEAPOLIS CENTER 119.6 290.4	CTAF 122.9



CATEGORY	A	B	C	D
LNAV MDA	1440-1	524 (600-1)	1440-1½ 524 (600-1½)	NA
C CIRCLING	1520-1 604 (700-1)	1540-1 624 (700-1)	1680-2¼ 764 (800-2¼)	NA

TARKIO, MISSOURI
Amdt 1A 19MAY22

40°27'N-95°22'W

GOULD PETERSON MUNI (K57)

RNAV (GPS) RWY 18

NC-3, 20 MAR 2025 to 17 APR 2025

NC-3, 20 MAR 2025 to 17 APR 2025