

# TACAN RWY 15

TACAN MXF Chan 97	APCH CRS 158°	Rwy ldg TDZE Arpt Elev	8008 171 171
----------------------	------------------	------------------------------	--------------------

[USAF]

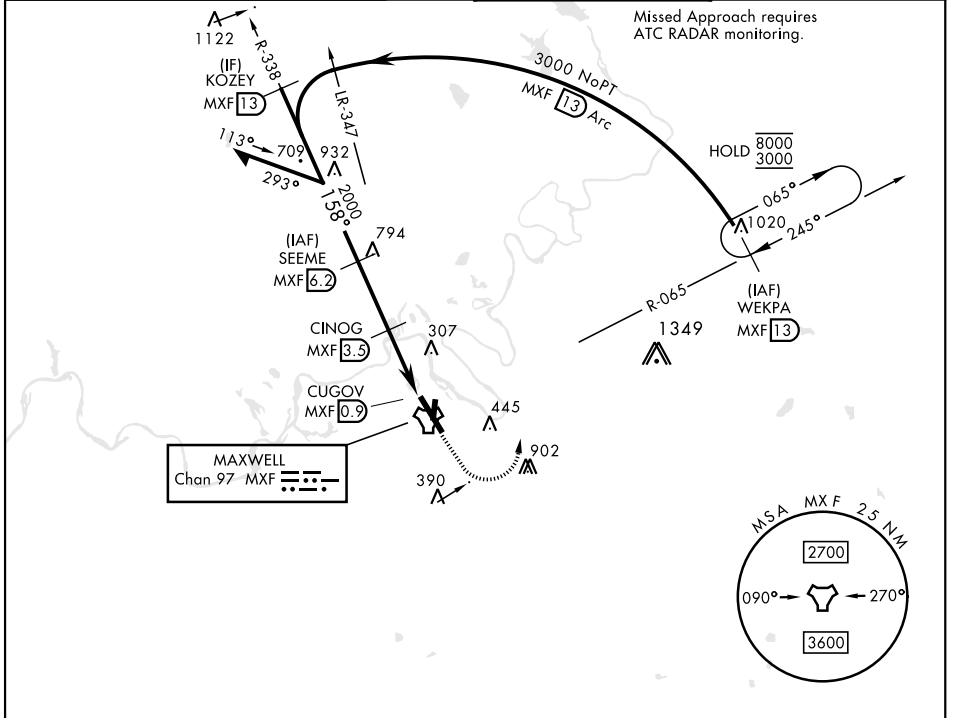
MAXWELL AFB (KMXF)

▼ \* When ALS inop, increase CAT AB RVR to 55 and vis to 1 mile, CAT CDE and vis to 1½ miles.  
 \*\* Circling not authorized E of Rwy 15-33.

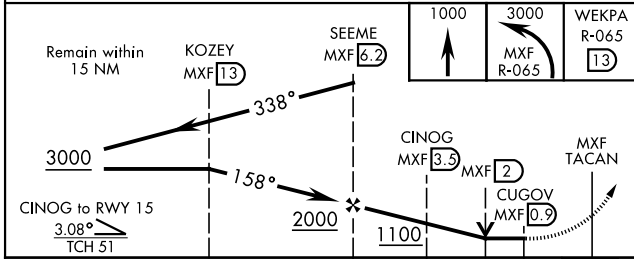
ALSF-1 

MISSED APPROACH: Climb to 1000, then climbing left turn to 3000 to intercept MXF TACAN R-065 outbound to 13 DME (WEKPA) and hold.

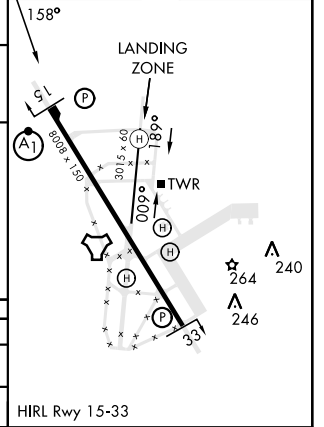
ATIS ★ <b>134.7 269.9</b>	MONTGOMERY APP CON ★ <b>121.2 269.05 (N) 124.0 363.025 (S)</b>	TOWER ★ <b>118.15 253.5</b>	GND CON ★ <b>127.15 289.4</b>
------------------------------	---	--------------------------------	----------------------------------



EMERG SAFE ALT 100 NM 5000



ELEV	171	TDZE	171
------	-----	------	-----



CATEGORY	A	B	C	D	E
S-15 *	620/24	449 (500-½)	620/45	449 (500-¾)	
CIRCLING **	680-1	509 (600-1)	720-1½ 549 (600-1½)	920-2½ 749 (800-2½)	NA

HIRL Rwy 15-33

# TACAN RWY 15

SE-4, 20 MAR 2025 to 17 APR 2025

SE-4, 20 MAR 2025 to 17 APR 2025