

MONTGOMERY, ALABAMA

# RNAV (GPS) RWY 15

APCH CRS	Rwy Idg	<b>8008</b>
150°	TDZE	171
	Arprt Elev	171

- (USAF)

MAXWELL AFB (KMXF)

RNP APCH-GPS



MISSED APPROACH: Climb to 1000 then climbing left turn to 3000 direct WEKPA and hold.

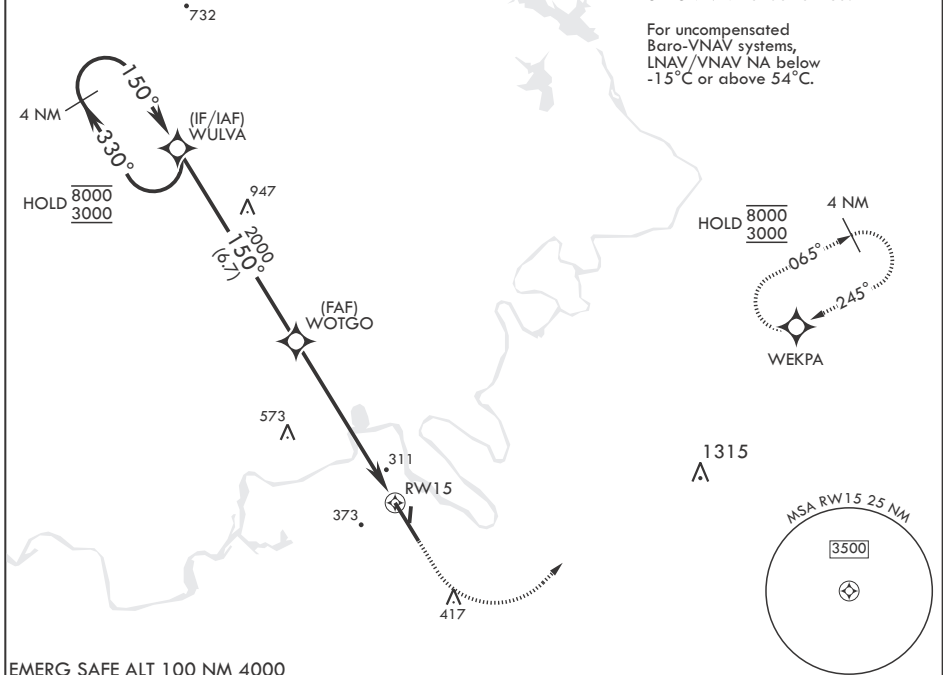
▼ \* When ALS inop, increase vis to 1 1/4 miles.  
 \*\* When ALS inop, increase CAT AB RVR to 55, vis to 1 mile; CAT CDE vis to 2 miles.

ATIS★ <b>134.7 269.9</b>	MONTGOMERY APP CON/DEP CON★ <b>121.2 269.05 N</b> <b>124.0 363.025 S</b>	TOWER★ <b>118.15 253.5</b>	GND CON★ <b>127.15 289.4</b>
-----------------------------	--	-------------------------------	---------------------------------

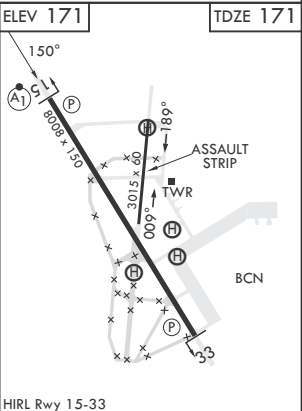
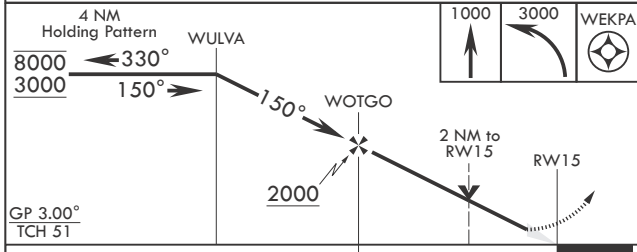
\*\*\* Circling not authorized NE of Rwy 15-33

SBAS VNAV not authorized.

For uncompensated Baro-VNAV systems, LNAV/VNAV NA below -15°C or above 54°C.



EMERG SAFE ALT 100 NM 4000



CATEGORY	A	B	C	D	E
LNAV/VNAV DA*	593/40		422	(500-¾)	
LNAV MDA**	860/24	689 (700-½)	860-1½	689	(700-1½)
CIRCLING***	860-1	689 (700-1)	860-2 689 (700-2)	920-2½ 749 (800-2½)	NA

MONTGOMERY, ALABAMA

32°23'N - 86°22'W

MAXWELL AFB (KMXF)

Orig 20MAR25

# RNAV (GPS) RWY 15

SE-4, 20 MAR 2025 to 17 APR 2025

SE-4, 20 MAR 2025 to 17 APR 2025