

# ILS or LOC/DME RWY 15

LOC I-MXF <b>109.3</b>	APCH CRS <b>150°</b>	Rwy Idg TDZE Arprt Elev <b>8008</b> <b>171</b> <b>171</b>
---------------------------	-------------------------	--

[USAF]

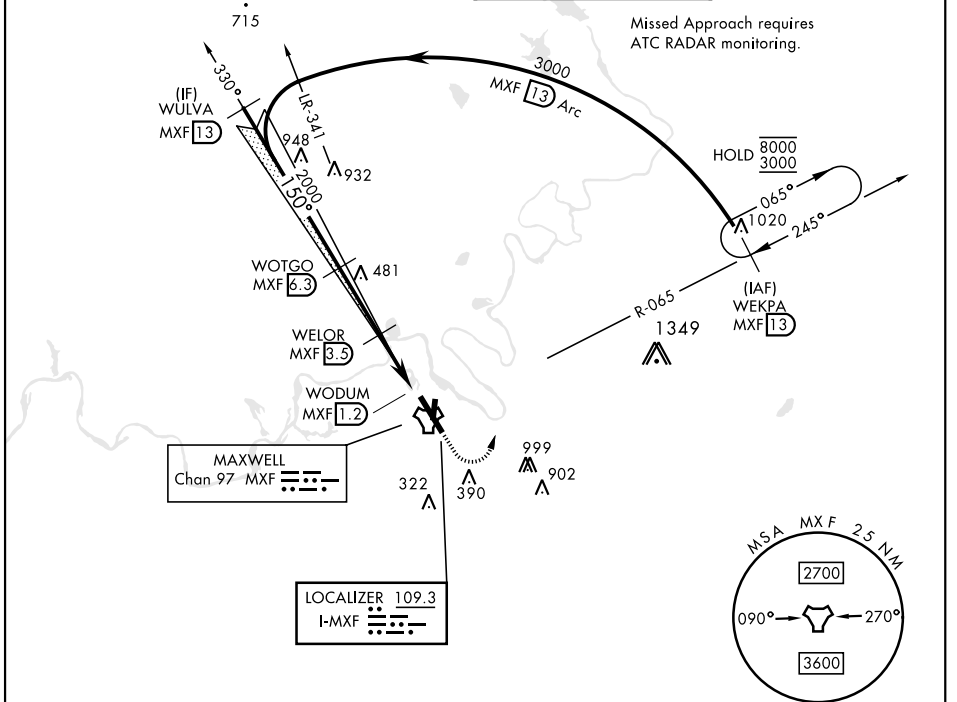
MAXWELL AFB (KMXF)

V \* When ALS inop, increase RVR to 40 and vis to ¾ mile.  
 \*\* When ALS inop, increase CAT AB RVR to 55 and vis to 1 mile, CAT CDE vis to 1½ mile.  
 \*\*\* Circling not authorized E of Rwy 15-33.



**MISSED APPROACH:** Climb to 1000, then climbing left turn to 3000 to intercept MXF TACAN R-065 outbound to 13 DME (WEKPA) and hold.

ATIS ★ <b>134.7 269.9</b>	MONTGOMERY APP CON ★ <b>121.2 269.05 (N)</b> <b>124.0 363.025 (S)</b>	TOWER ★ <b>118.15 253.5</b>	GND CON ★ <b>127.15 289.4</b>
------------------------------	---	--------------------------------	----------------------------------



SE-4, 20 MAR 2025 to 17 APR 2025

SE-4, 20 MAR 2025 to 17 APR 2025

EMERG SAFE ALT 100 NM 5000

	1000	3000	WEKPA R-065 MXF 13	ELEV 171	TDZE 171
CATEGORY	A	B	C	D	E
S-ILS 15 *	371/24		200	(200-½)	
S-LOC 15 **	600/24	429 (500-½)	600/40	429	(500-¾)
*** CIRCLING	680-1	509 (600-1)	720-1½ 549 (600-1½)	920-2½ 749 (800-2½)	NA

HIRL Rwy 15-33

# ILS or LOC/DME RWY 15