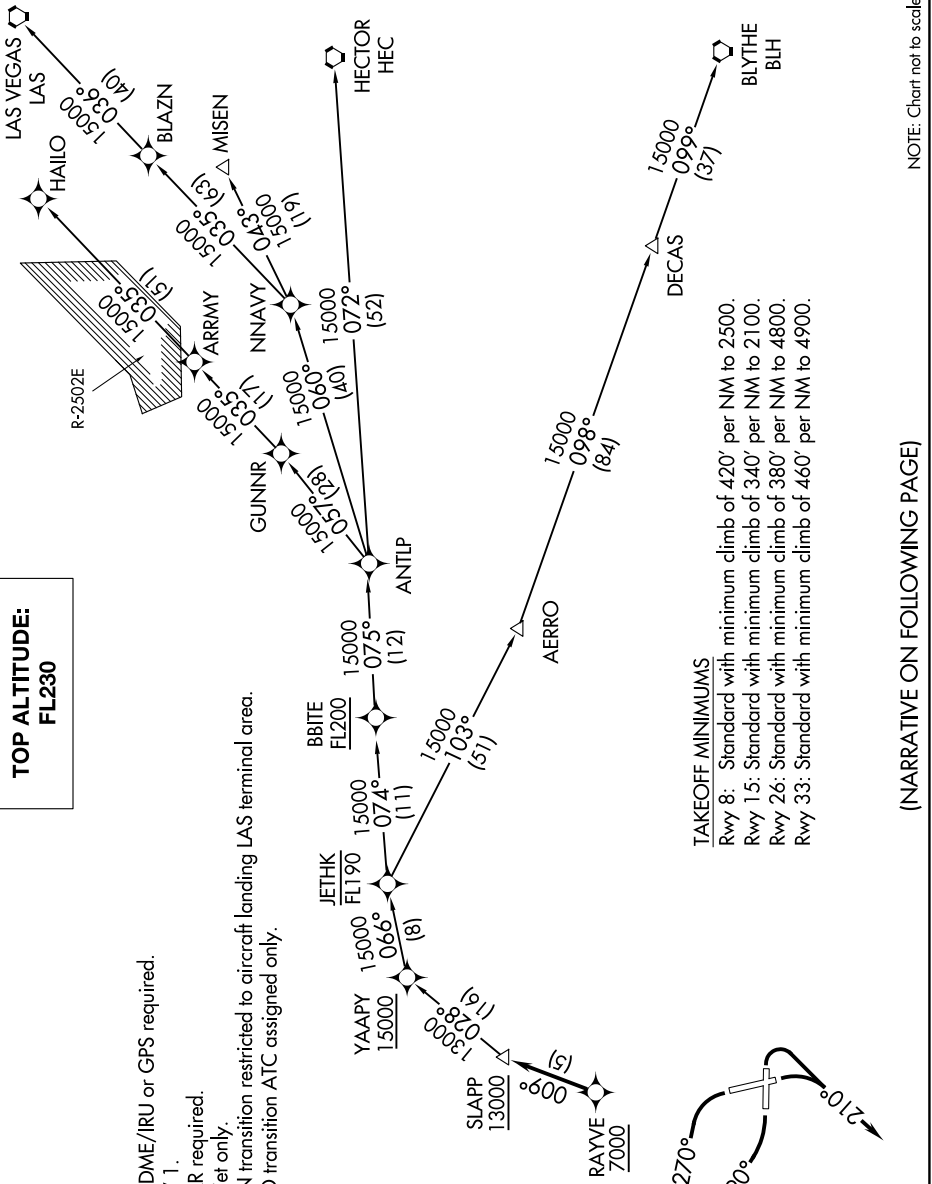


SW-3, 20 MAR 2025 to 17 APR 2025

**TOP ALTITUDE:
FL230**

CINCDEL
118.0 348.6
CPDLC
SOCAL DEP CON
124.6 298.85

- NOTE: DME/DME/IRU or GPS required.
- NOTE: RNAV 1.
- NOTE: RADAR required.
- NOTE: Turbojet only.
- NOTE: MISEN transition restricted to aircraft landing LAS terminal area.
- NOTE: HAILO transition ATC assigned only.



TAKEOFF MINIMUMS
 Rwy 8: Standard with minimum climb of 420' per NM to 2500.
 Rwy 15: Standard with minimum climb of 340' per NM to 2100.
 Rwy 26: Standard with minimum climb of 380' per NM to 4800.
 Rwy 33: Standard with minimum climb of 460' per NM to 4900.

(NARRATIVE ON FOLLOWING PAGE)

NOTE: Chart not to scale.

SW-3, 20 MAR 2025 to 17 APR 2025