

LOC I-BUR 109.5	APP CRS 079°	Rwy Idg TDZE Apt Elev 5801 727 778
---------------------------	------------------------	--

ILS Y or LOC Y RWY 8

BOB HOPE (BUR)

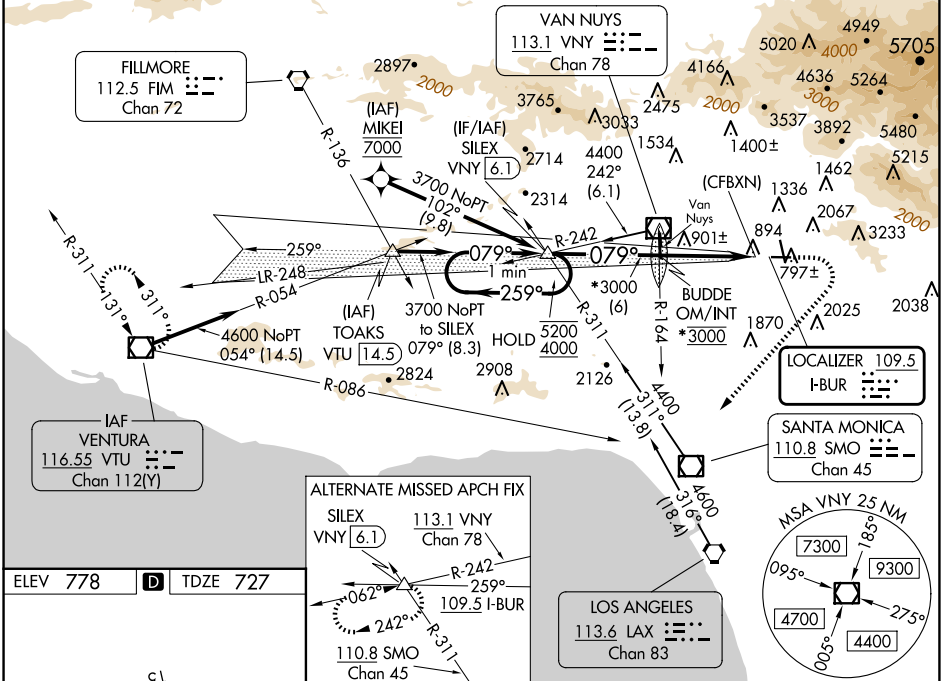
From MIKEI: RNAV 1-GPS required.

Localizer unusable within 0.9 NM to thld. Straight-in Rwy 8 at night, Circling to Rwy 33 at night, operational VGSI required, remain on or above VGSI glidepath until threshold.

Circling Rwy 26 NA at night and Circling Rwy 33 NA at night for Cat D. Circling NA for Cats A/B/C northeast of Rwy 15 and 26. Circling NA for Cat D east of Rwy 15-33. Inop table does not apply to S-ILS Rwy 8. For inop ALS, increase S-LOC 8 Cats A/B visibility to 1¼ SM. Rwy 8 helicopter visibility reduction below RVR 5000 NA.

MALSRL
Climb to 1800 then climbing right turn to 4600 on heading 210° and VTU VOR/DME R-086 to VTU VOR/DME and hold.

D-ATIS 134.5	SOCAL APP CON 120.4 360.6 (NORTH) 134.2 338.2 (WEST)	BURBANK TOWER 118.7 254.3	GND CON 123.9 348.6	CLNC DEL 118.0 348.6	CPDLC
------------------------	--	-------------------------------------	-------------------------------	--------------------------------	-------



ELEV 778 **D** TDZE 727

One Minute Holding Pattern

SILEX VNY (6.1)

BUDDIE OM/INT

VTU R-086

VTU

*LOC only

5200	←259°	4000	←079°	3700	←079°	3000	←079°	*3000
------	-------	------	-------	------	-------	------	-------	-------

GS 3.00° TCH 60

6 NM 5.2 NM 0.9

MIRL Rwy 15-33
HIRL Rwy 8-26
REIL Rws 15, 26 and 33

FAF to MAP 5.2 NM

Knots	60	90	120	150	180
Min:Sec	5:12	3:28	2:36	2:05	1:44

CIRCLING

A	B	C	D
1620-1¼	1640-1¼	2240-3	2320-3
842 (900-1¼)	862 (900-1¼)	1462 (1500-3)	1542 (1600-3)

CATEGORY	A	B	C	D
S-ILS 8	1555-2½		828 (800-2½)	
S-LOC 8	1620/50	893 (900-1)	1620-2	893 (900-2)
CIRCLING	1620-1¼	1640-1¼	2240-3	2320-3
	842 (900-1¼)	862 (900-1¼)	1462 (1500-3)	1542 (1600-3)

SW-3, 20 MAR 2025 to 17 APR 2025

SW-3, 20 MAR 2025 to 17 APR 2025