

WAAS CH 81805 W33A	APP CRS 329°	Rwy Idg TDZE Apt Elev	6000 195 219
--	------------------------	-----------------------------	---

RNAV (GPS) RWY 33

STAFFORD RGNL (R.MN)

RNP APCH - GPS.

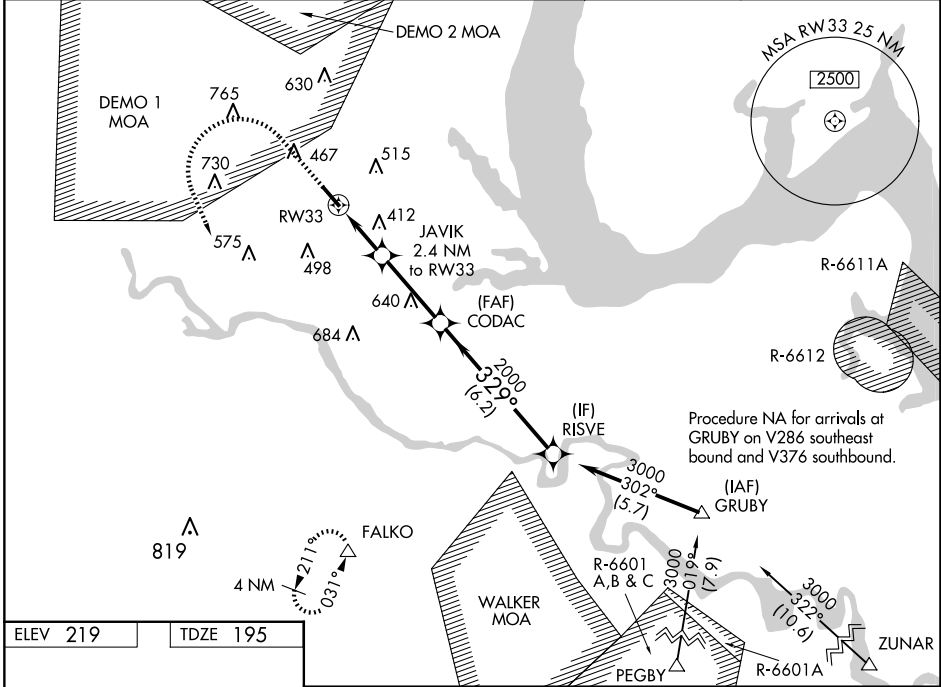
⚠ Inop table does not apply to LPV all Cats. For uncompensated Baro-VNAV systems, LNAV/VNAV NA below -15°C or above 54°C. Circling Rwy 15 NA at night.

MALS



MISSED APPROACH: Climb to 700 then climbing left turn to 3000 direct FALKO and hold, continue climb-in-hold to 3000.

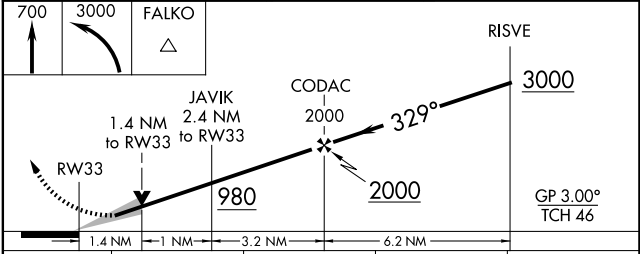
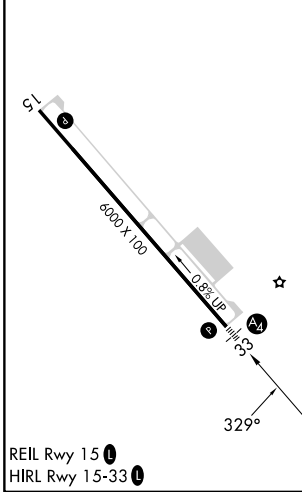
AWOS-3 126.325	QUANTICO APP CON * 127.05 290.375	GCO 135.075	UNICOM 122.725 (CTAF)
--------------------------	---	-----------------------	---------------------------------



NE-3, 20 FEB 2025 to 20 MAR 2025

NE-3, 20 FEB 2025 to 20 MAR 2025

ELEV 219	TDZE 195
----------	----------



CATEGORY	A	B	C	D
LPV DA	445- ³ / ₄ 250 (300- ³ / ₄)			
LNAV/VNAV DA	680-1 ¹ / ₈ 485 (500-1 ¹ / ₈)			
LNAV MDA	680- ³ / ₄	485 (500- ³ / ₄)	680-1 ¹ / ₈	485 (500-1 ¹ / ₈)
CIRCLING	720-1 501 (600-1)	820-1 601 (700-1)	820-1 ³ / ₄ 601 (700-1 ³ / ₄)	1040-2 ³ / ₄ 821 (900-2 ³ / ₄)