

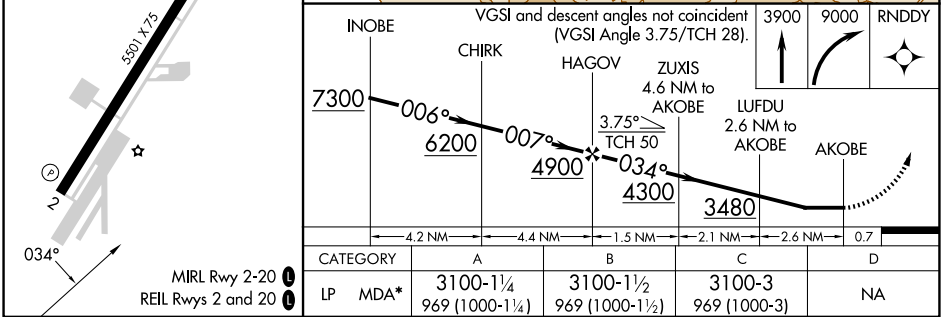
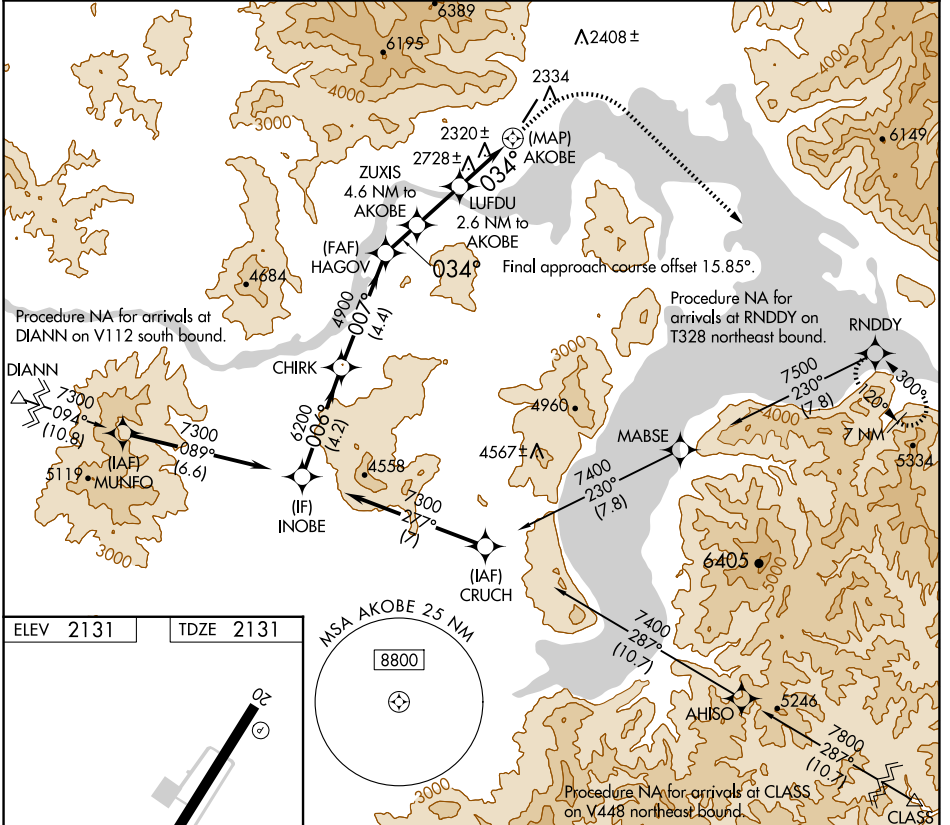
| | | | |
|--|------------------------|-----------------------------|---|
| WAAS CH 63146 W02A | APP CRS 034° | Rwy Idg TDZE Apt Elev | 5501 2131 2131 |
|--|------------------------|-----------------------------|---|

RNAV (GPS) Z RWY 2

SANDPOINT (SZT)

| | |
|--|--|
| RNP APCH - GPS. | MISSED APPROACH: Climb to 3900 then climbing right turn to 9000 direct RNDY and hold, continue climb-in-hold to 9000. *Missed approach requires minimum climb of 350 feet per NM to 6500; If unable to meet climb gradient, see RNAV (GPS)-B. |
| ⚠ Rwy 2 helicopter visibility reduction below 1 SM NA. Procedure NA at night. | |

| | | |
|--------------------------|--|---------------------------------|
| AWOS-2 135.425 | SEATTLE CENTER 123.95 290.55 | UNICOM 122.7 (CTAF) 0 |
|--------------------------|--|---------------------------------|



SANDPOINT, IDAHO
Orig 11JUL24

48°18'N-116°34'W

RNAV (GPS) Z RWY 2

SANDPOINT (SZT)

NW-1, 20 FEB 2025 to 20 MAR 2025

NW-1, 20 FEB 2025 to 20 MAR 2025