

FORT INDIANTOWN GAP, PENNSYLVANIA

COPTER RNAV (GPS) RWY 25

| | | | |
|--------------------------|------------------|------------------------------|--------------------|
| WAAS CH 95177 W25A | APCH CRS 250° | Rwy ldg TDZE Arpt Elev | 3860 487 487 |
|--------------------------|------------------|------------------------------|--------------------|

-(USA)

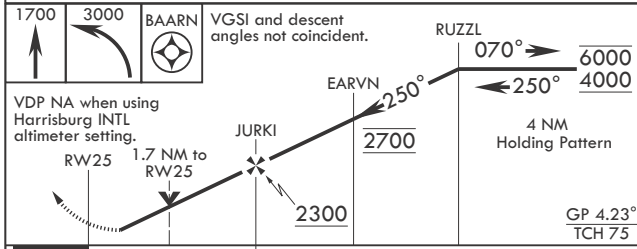
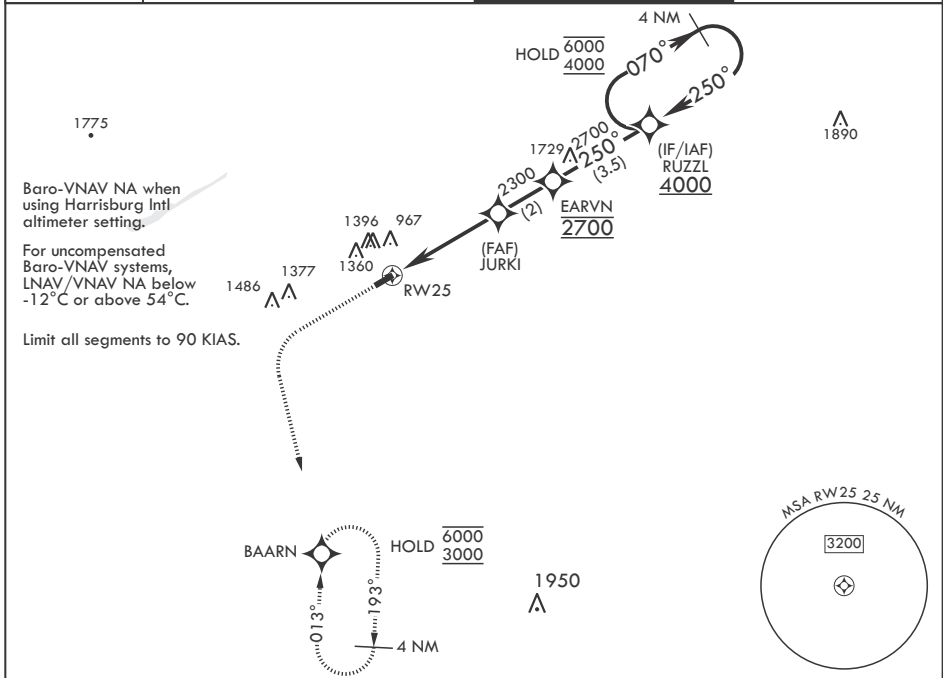
MUIR AHP (KMUI)

RNP APCH - GPS

▼ * When local altimeter not received, use Harrisburg Intl altimeter setting. Increase all DA by 64', vis by 1/8 miles.
 ** When local altimeter not received, use Harrisburg Intl altimeter setting. Increase MDA 80', vis 1/4 miles.

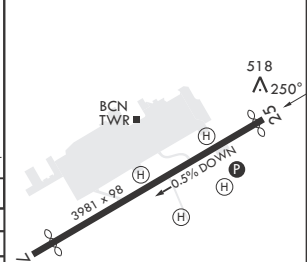
MISSED APPROACH: Climb to 1700 then climbing left turn to 3000 direct to BAARN and hold.

| | | | |
|-----------------|---|---------------------------------|----------------------------|
| ASOS 124.175 | HARRISBURG APP CON/DEP CON 118.25 269.45 | TOWER ★ 126.2 (CTAF) 290.325 | GND CON 135.675 269.525 |
|-----------------|---|---------------------------------|----------------------------|



| | |
|----------|----------|
| ELEV 487 | TDZE 487 |
|----------|----------|

Rwy 7 ldg 3631'
 Rwy 25 ldg 3860'



| CATEGORY | COPTER | |
|--|------------------------------------|--|
| LPV DA* | 816-1 | 329 (400-1) |
| LNAV/VNAV DA* | 1166-1 ⁷ / ₈ | 679 (700-1 ⁷ / ₈) |
| LNAV MDA** | 1300-1 | 813 (900-1) |
| WITH HARRISBURG INTL ALTIMETER SETTING | | |
| LPV DA | 880-1 ¹ / ₈ | 393 (400-1 ¹ / ₈) |
| LNAV/VNAV DA | 1230-2 | 743 (800-2) |
| LNAV MDA | 1380-1 ¹ / ₄ | 893 (900-1 ¹ / ₄) |

FORT INDIANTOWN GAP, PENNSYLVANIA

40°26'N - 76°34'W

MUIR AHP (KMUI)

Amdt 1 23JAN25

COPTER RNAV (GPS) RWY 25

NE-4, 20 FEB 2025 to 20 MAR 2025

NE-4, 20 FEB 2025 to 20 MAR 2025