

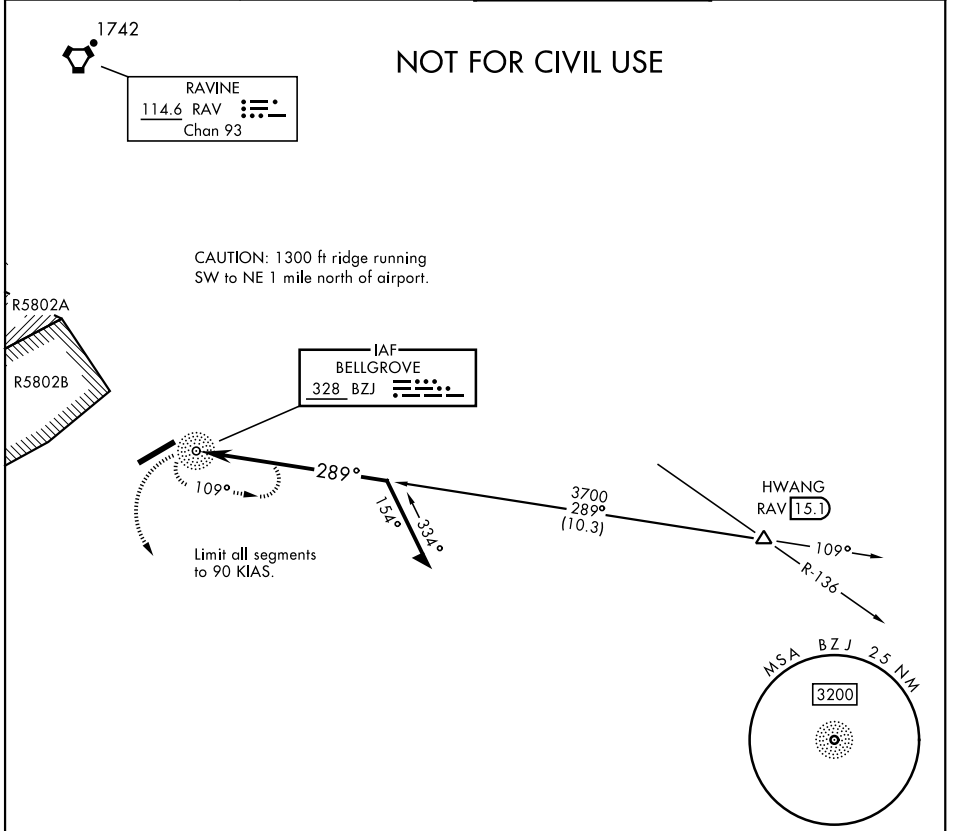
# COPTER NDB Y-289<sup>0</sup>

NDB BZJ <b>328</b>	APCH CRS <b>289°</b>	Rwy Idg TDZE Arprt Elev <b>N/A</b> <b>487</b>	[USA]	MUIR AHP (KMUI)
-----------------------	-------------------------	--	-------	-----------------

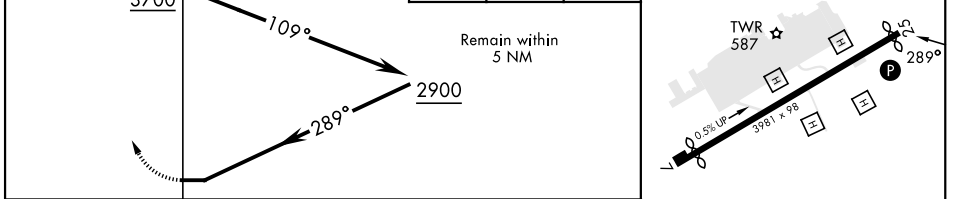
▼ When local altimeter setting not received, use Harrisburg Intl altimeter setting.

MISSED APPROACH: Climb to 2000 via heading 160° then climbing left turn to 2900 direct BZJ NDB and hold. Continue climb in hold.

ASOS <b>124.175</b>	HARRISBURG APP CON <b>118.25 269.45</b>	TOWER ★ <b>126.2 (CTAF) 0 290.325</b>	GND CON <b>135.675 269.525</b>
------------------------	--	--	-----------------------------------



2000	2900	BZJ	ELEV 487	Rwy 7 Idg 3631'	Rwy 25 Idg 3860'
hdg 160°					



CATEGORY	COPTER		MIRL Rwy 7-25
H-289°	1480-1¼	993 (1000-1¼)	REIL all rwys

# COPTER NDB Y-289<sup>0</sup>

NE-4, 20 FEB 2025 to 20 MAR 2025

NE-4, 20 FEB 2025 to 20 MAR 2025