

| | | | |
|--|------------------------|-----------------------------|---|
| WAAS CH 50309 W22A | APP CRS 218° | Rwy Idg TDZE Apt Elev | 5420 161 163 |
|--|------------------------|-----------------------------|---|

RNAV (GPS) RWY 22

MC MINNVILLE MUNI (MMV)

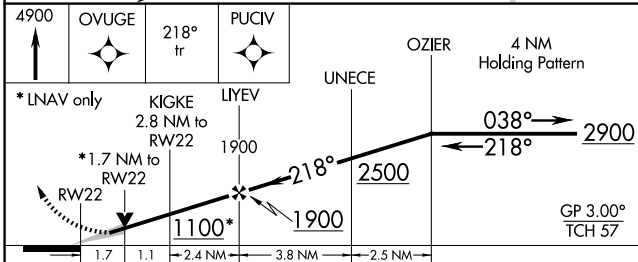
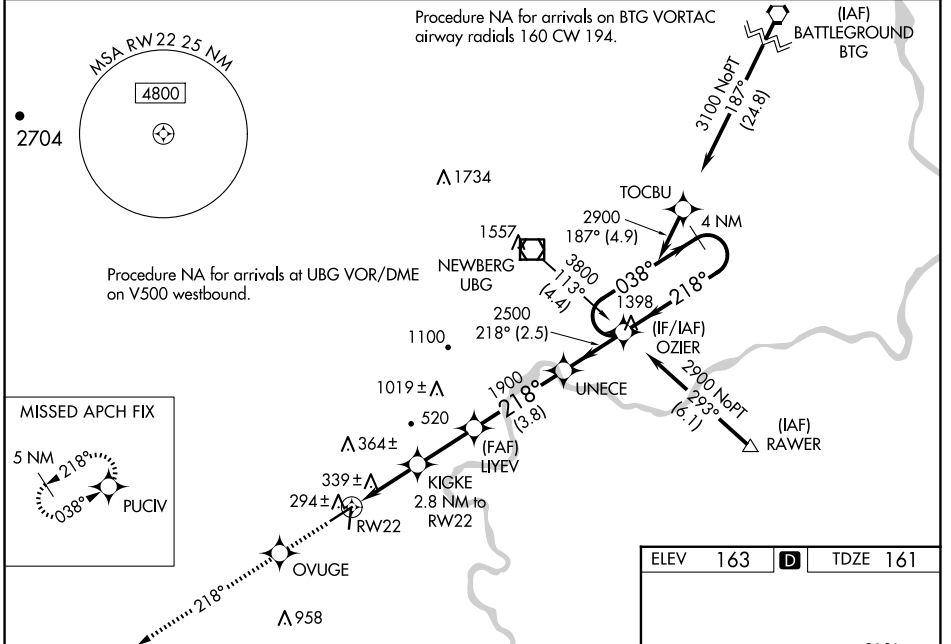
RNP APCH.

▼ Baro-VNAV NA when using Aurora State altimeter setting. For uncompensated Baro-VNAV systems, LNAV/VNAV NA below -15°C or above 48°C. When local altimeter setting not received, use Aurora State altimeter setting; increase LPV DA to 534 feet, LNAV/VNAV DA to 703 feet; increase all MDAs 60 feet and visibility LNAV Cats C and D ½ SM. For inop ALS, increase LPV all Cats visibility to ¾ SM, LNAV/VNAV all Cats to 1 ½ SM, LNAV Cat A/B to 1 SM and Cat C/D to 1 ½ SM. For inop ALS when using Aurora State altimeter setting, increase LNAV/VNAV all Cats visibility to 1 ½ SM, LNAV Cat A/B to 1 SM and Cat C/D to 1 ½ SM. VDP NA when using Aurora State altimeter setting.

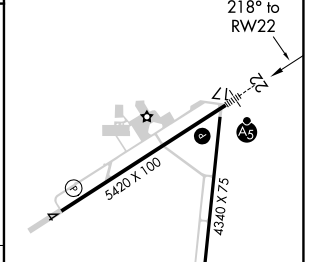
MALSR
AS

MISSED APPROACH:
Climb to 4900 direct OVUGE then on 218° track to PUCIV and hold, continue climb-in-hold to 4900.

| | | | | |
|------------------------|--|--|---------------------------|--|
| ASOS 135.675 | PORTLAND APP CON 126.0 284.6 (NORTH) | SEATTLE CENTER 125.8 291.7 (SOUTH) | CLNC DEL 118.35 | UNICOM 123.0 (CTAF) 1 |
|------------------------|--|--|---------------------------|--|



| | | |
|----------|----------|----------|
| ELEV 163 | D | TDZE 161 |
|----------|----------|----------|



| CATEGORY | A | B | C | D |
|--------------|-------|-------------|--------------|--------------|
| LPV DA | | 474-¾ | 313 (400-¾) | |
| LNAV/VNAV DA | | 643-1¼ | 482 (500-1¼) | |
| LNAV MDA | 740-¾ | 579 (600-¾) | 740-1¼ | 579 (600-1¼) |

REIL Rwy 4 **1**

HIRL Rwy 4-22 **1**

NW-1, 20 FEB 2025 to 20 MAR 2025

NW-1, 20 FEB 2025 to 20 MAR 2025