

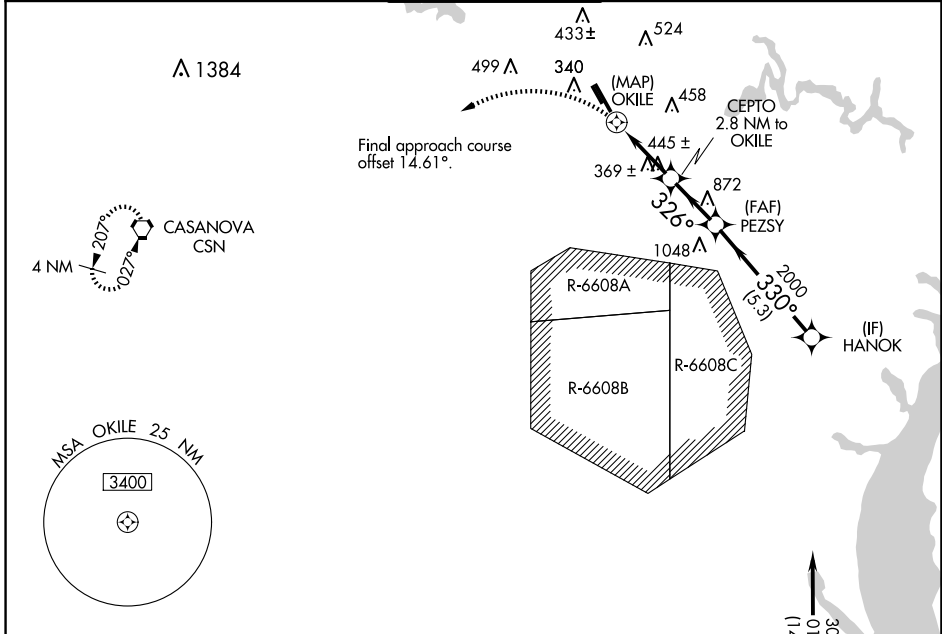
WAAS CH <b>63130</b> <b>W34A</b>	APP CRS <b>326°</b>	Rwy Idg TDZE Apt Elev	<b>6200</b> <b>178</b> <b>192</b>
--	------------------------	-----------------------------	---

# RNAV (GPS) RWY 34R

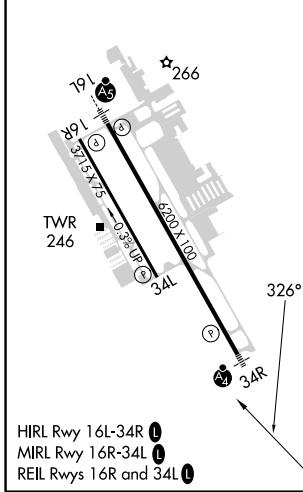
MANASSAS RGNL/HARRY P DAVIS FLD (HEF)

RNP APCH. ▼ Rwy 34R helicopter visibility reduction below 3/4 SM NA. For inop ALS, increase LP and LNAV Cats C/D visibility to 1 3/8 SM. ▲	MALSF [Symbol]	MISSED APPROACH: Climbing left turn to 3000 direct CSN VORTAC and hold.
--	-------------------	---

ATIS <b>125.175</b>	POTOMAC APP CON <b>128.525 306.925</b>	MANASSAS TOWER ★ <b>133.1 (CTAF) 360.75</b>	GND CON <b>121.8</b>	CLNC DEL <b>120.2</b>
------------------------	---	--	-------------------------	--------------------------



ELEV <b>192</b>	TDZE <b>178</b>
-----------------	-----------------



	3000 CSN	HANOK		
	OKILE	CEPTO 2.8 NM to OKILE	PEZSY	3000
	1 NM to OKILE	1.8 NM	2.3 NM	5.3 NM
	OKILE	1260	2000	3000
	0.5	1 NM	1.8 NM	2.3 NM
CATEGORY	A	B	C	D
LP MDA	620-1 442 (500-1)			
LNAV MDA	640-1	462 (500-1)	640-1 1/8	462 (500-1 1/8)
CIRCLING	700-1 508 (600-1)	740-1 548 (600-1)	840-1 3/4 648 (700-1 3/4)	920-2 1/4 728 (800-2 1/4)

NE-3, 20 FEB 2025 to 20 MAR 2025

NE-3, 20 FEB 2025 to 20 MAR 2025