

WAAS CH <b>78035</b> <b>W16B</b>	APP CRS <b>161°</b>	Rwy Idg <b>3715</b> TDZE <b>186</b> Apt Elev <b>192</b>
--	------------------------	---

# RNAV (GPS) RWY 16R

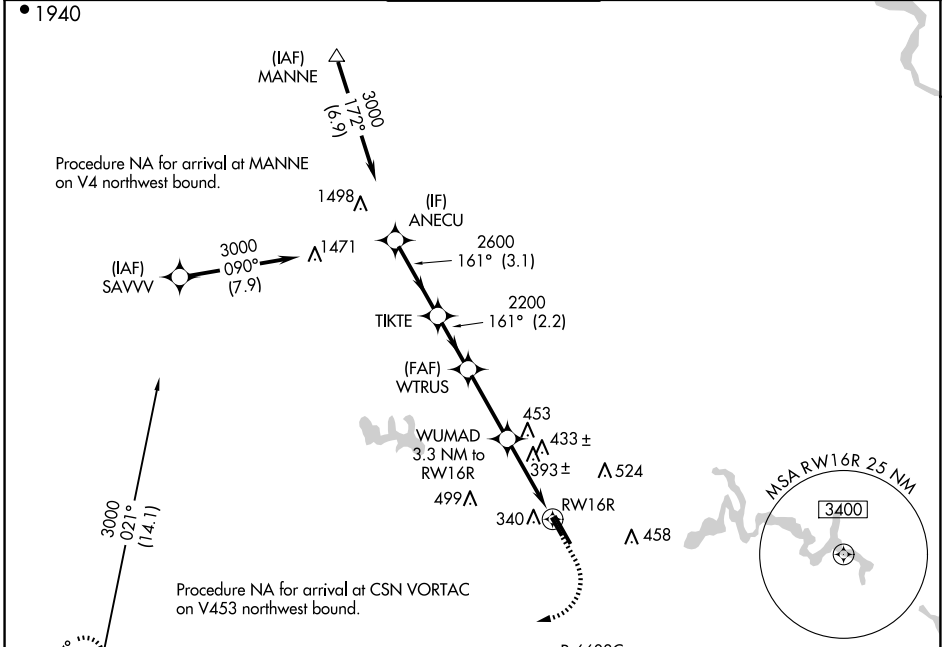
MANASSAS RGNL/HARRY P DAVIS FLD (HEF)

RNP APCH - GPS.

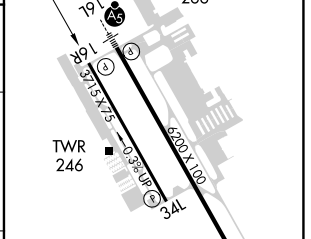
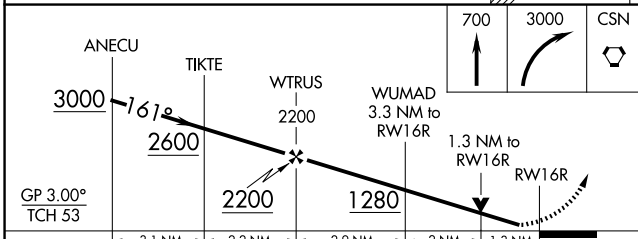
▼ Rwy 16R helicopter visibility reduction below 3/4 SM NA. For uncompensated Baro-VNAV systems, LNAV/VNAV NA below -1.5°C or above 54°C.

MISSED APPROACH: Climb to 700 then climbing right turn to 3000 direct CSN VORTAC and hold.

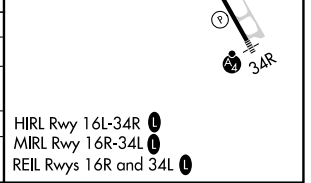
ATIS <b>125.175</b>	POTOMAC APP CON <b>128.525 306.925</b>	MANASSAS TOWER * <b>133.1 (CTAF) 0 360.75</b>	GND CON <b>121.8</b>	CLNC DEL <b>120.2</b>
------------------------	---	--	-------------------------	--------------------------



ELEV 192	TDZE 186
----------	----------



CATEGORY	A	B	C	D
LPV DA		494-7/8	308 (400-7/8)	
LNAV/VNAV DA		675-13/8	489 (500-13/8)	
LNAV MDA	660-1	474 (500-1)	660-13/8	474 (500-13/8)
CIRCLING	720-1 528 (600-1)	740-1 548 (600-1)	840-13/4 648 (700-13/4)	880-21/4 688 (700-21/4)



NE-3, 20 FEB 2025 to 20 MAR 2025

NE-3, 20 FEB 2025 to 20 MAR 2025