

LOC/DME I-CBE 110.5 Chan 42	APP CRS 228°	Rwy Idg TDZE Apt Elev 5047 775 775
---	------------------------	--

LOC/DME RWY 23
GREATER CUMBERLAND RGNL (CBE)

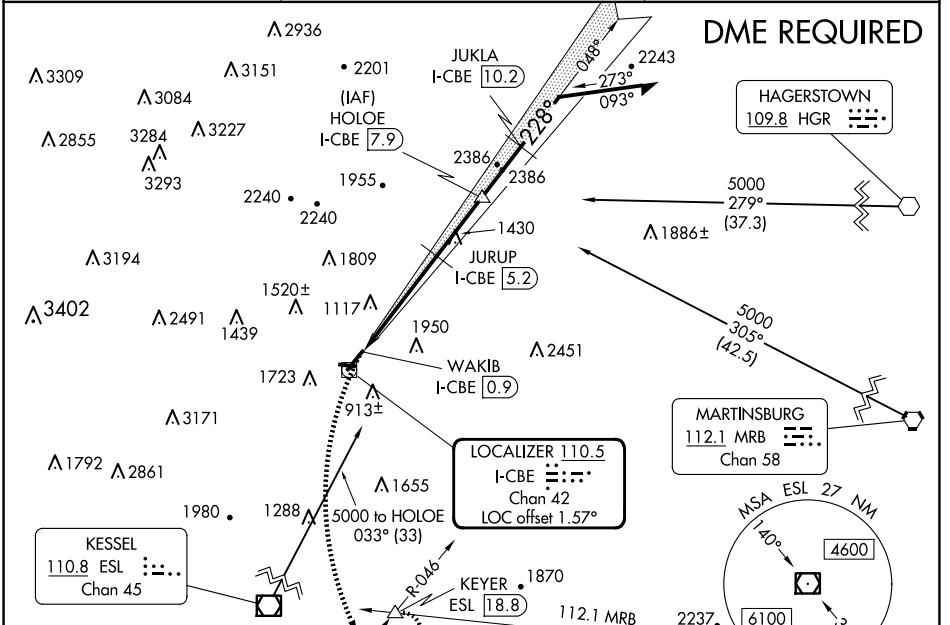
⚠ When local altimeter setting not received, use Winchester altimeter setting and increase all MDA 100 feet, increase S-23 Cat B visibility 1/4 mile, Cats C and D 1/2 mile. Night landing: Rwy 5, 11, 29 NA. Circling NA northwest of Rwy 5/23. Helicopter visibility reduction below 3/4 SM NA.

⚠ MISSED APPROACH: Climbing left turn to 5000 on heading 175° and on ESL VOR/DME R-046 to KEYER/ESL 18.8 DME and hold, continue climb-in-hold to 5000.

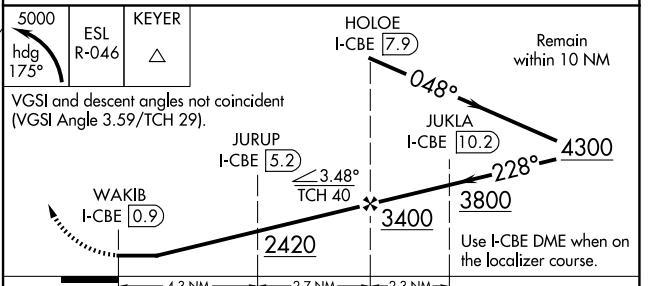
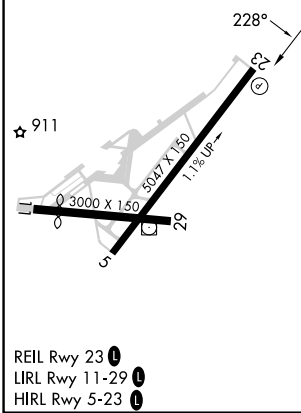
AWOS-3
128.625

JOHNSTOWN APP CON ★
121.2 299.2

UNICOM
122.8 (CTAF) 0



ELEV 775	TDZE 775
-----------------	-----------------



CATEGORY	A	B	C	D
S-23	1680-1 1/4	905 (1000-1 1/4)	1680-2 1/2	905 (1000-2 1/2)
C CIRCLING	1680-1 1/4 905 (1000-1 1/4)	2140-1 1/2 1365 (1400-1 1/2)	2260-3 1485 (1500-3)	2360-3 1585 (1600-3)

NE-3, 20 FEB 2025 to 20 MAR 2025

NE-3, 20 FEB 2025 to 20 MAR 2025