

NE-3, 20 FEB 2025 to 20 MAR 2025

TOP ALTITUDE:
3000



TAKEOFF MINIMUMS

Rwy 14: Standard.
Rwy 32: Standard with minimum climb
of 240' per NM to 1900.

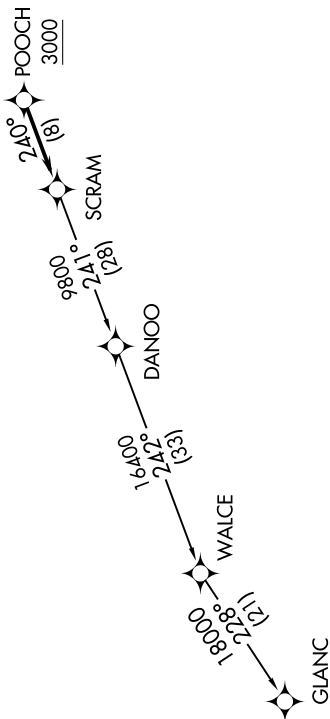
NOTE: RNAV 1.
NOTE: RADAR required.
NOTE: DME/DME/IRU or GPS required.
NOTE: Turbo-jets only.
NOTE: Takeoff Rwy 32 requires a climb to 2500 on
heading 34.1° before proceeding on the ATC
assigned heading for obstacle avoidance.

NOTE: Chart not to scale.

DEPARTURE ROUTE DESCRIPTION

Climb on heading assigned by ATC, expect RADAR vectors to POOCH, then on track 240° to SCRAM, thence as depicted. Maintain 3000, expect clearance to filed altitude within ten (10) minutes after departure.

GLANC TRANSITION (SCRAM6.GLANC):



POTOMAC DEP CON
120.45 306.925
AWOS-3
124.85
CLNC DEL
126.15
UNICOM
122.975 (CTAF)

NE-3, 20 FEB 2025 to 20 MAR 2025