

WAAS CH <b>97512</b> <b>W32A</b>	APP CRS <b>324°</b>	Rwy Idg TDZE Apt Elev	<b>5498</b> <b>715</b> <b>726</b>
--	------------------------	-----------------------------	---

# RNAV (GPS) RWY 32

WINCHESTER RGNL (OKV)

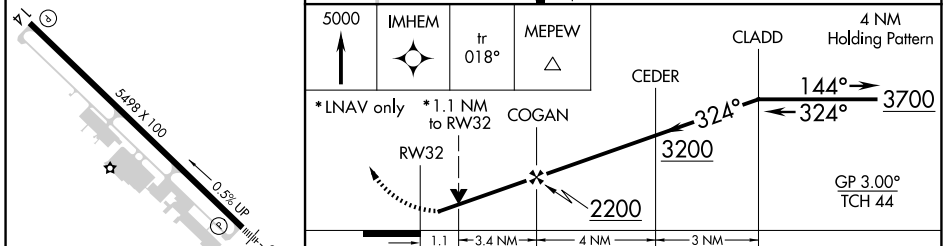
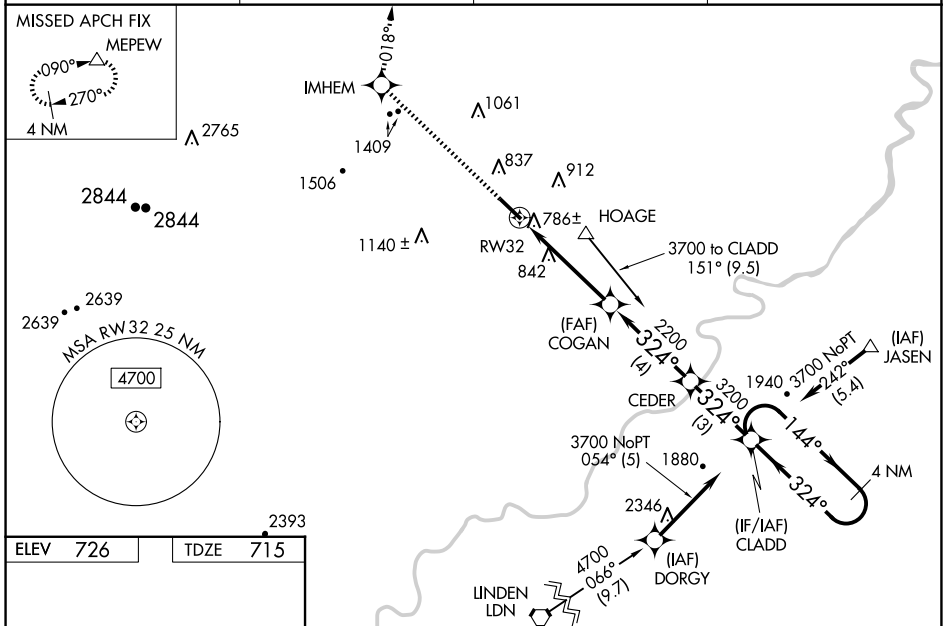
**RNP APCH.**

**Baro-VNAV NA** when using Martinsburg altimeter setting. For uncompensated Baro-VNAV systems, LNAV/VNAV NA below -16°C or above 47°C.  
**Rwy 32 helicopter visibility reduction** below ¾ SM NA. When local altimeter setting not received, use Martinsburg altimeter setting and increase all DA 63 feet and all MDA 80 feet, and LNAV/VNAV all Cats and Circling Cat C visibility ¼ mile. For inoperative MALSR, increase LNAV Cats A, B and C visibility to 1 mile and LNAV Cat D visibility to 1½ mile. Inoperative table does not apply to LPV. For inoperative MALSR when using Martinsburg altimeter setting, increase LPV all Cats and LNAV Cats A and B visibility to 1 mile. VDP NA when using Martinsburg altimeter setting.

**MALSR**

**MISSED APPROACH:** Climb to 5000 direct IMHEM and via track 018° to MEPEW and hold, continue climb-in-hold to 5000.

<b>AWOS-3</b> <b>124.85</b>	<b>POTOMAC APP CON</b> <b>120.45 306.925</b>	<b>CLNC DEL</b> <b>126.15</b>	<b>UNICOM</b> <b>122.975 (CTAF)</b>
--------------------------------	---	----------------------------------	--



CATEGORY	A	B	C	D
LPV DA		915-¾	200 (200-¾)	
LNAV/VNAV DA		1056-¾	341 (400-¾)	
LNAV MDA		1100-¾	385 (400-¾)	1100-1 385 (400-1)
<b>CIRCLING</b>	1180-1 454 (500-1)	1220-1 494 (500-1)	1380-1¾ 654 (700-1¾)	1480-2½ 754 (800-2½)

NE-3, 20 FEB 2025 to 20 MAR 2025

NE-3, 20 FEB 2025 to 20 MAR 2025