

TOP ALTITUDE:
3000



NE-3, 20 FEB 2025 to 20 MAR 2025

POTOMAC DEP CON
120.45 306.925
AWOS-3
124.85
CLNC DEL
126.15
UNICOM
122.975 (CTAF)

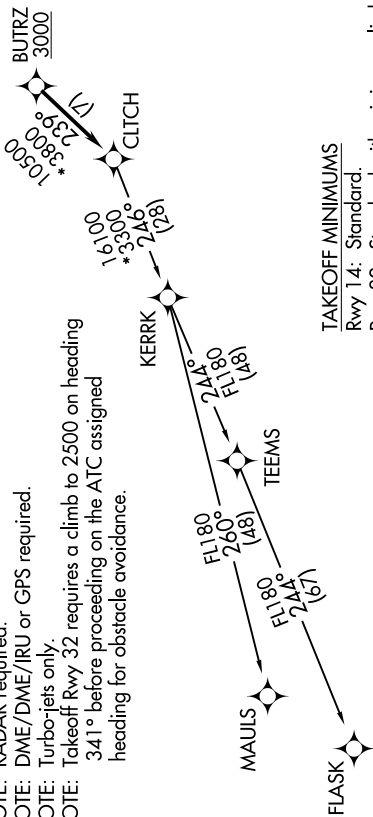
DEPARTURE ROUTE DESCRIPTION

Climb on heading assigned by ATC, expect RADAR vectors to BUTRZ, then on track 239° to CLTCH, thence. . . .

. . . on assigned transition, maintain altitude assigned by ATC, expect clearance to filed altitude within ten (10) minutes after departure.

FLASK TRANSITION (CLTCH3.FLASK)
MAULS TRANSITION (CLTCH3.MAULS)

- NOTE: RNAV 1.
- NOTE: RADAR required.
- NOTE: DME/DME/IRU or GPS required.
- NOTE: Turbojets only.
- NOTE: Takeoff Rwy 32 requires a climb to 2500 on heading 341° before proceeding on the ATC assigned heading for obstacle avoidance.



TAKEOFF MINIMUMS
Rwy 14: Standard.
Rwy 32: Standard with minimum climb of 240' per NM to 1900.

NOTE: Chart not to scale.

NE-3, 20 FEB 2025 to 20 MAR 2025