

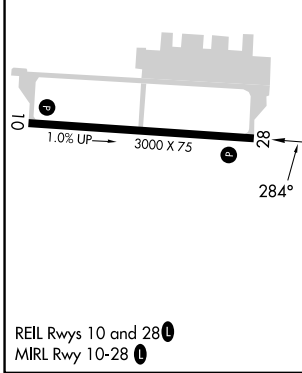
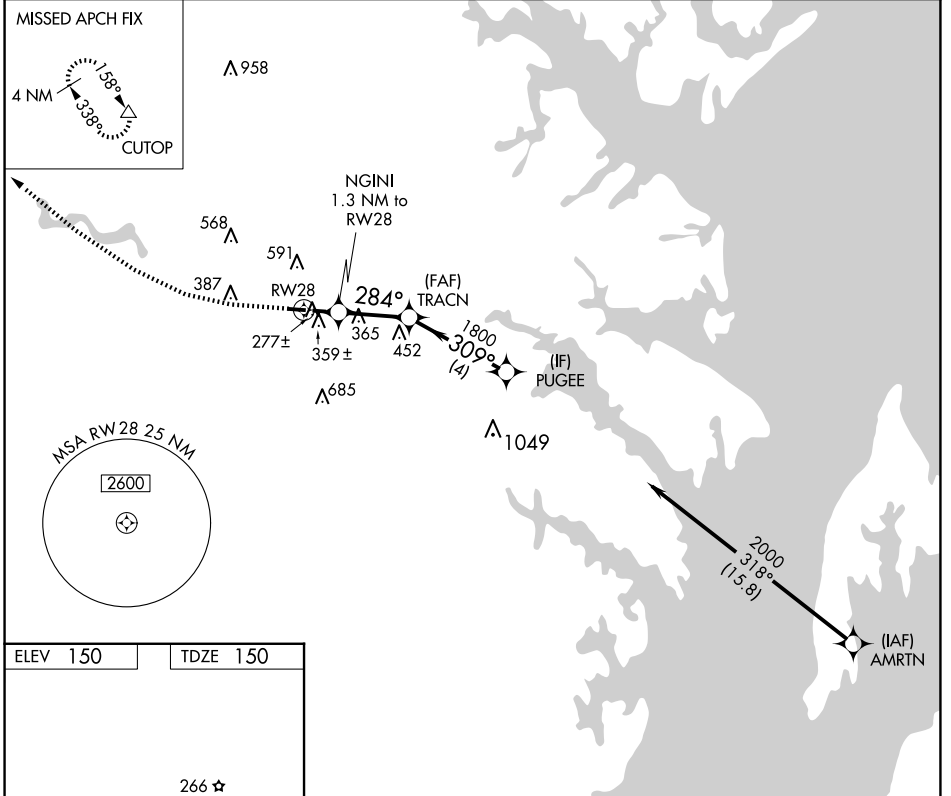
WAAS CH 56347 W28A	APP CRS 284°	Rwy Idg 3000 TDZE 150 Apt Elev 150
--	------------------------	---

RNAV (GPS) RWY 28

TIPTON (FME)

RNP APCH - GPS.	MISSED APPROACH: Climb to 570 then climbing right turn to 2000 direct CUTOP and hold.
<p>▼ Rwy 28 helicopter visibility reduction below 3/4 SM NA. Circling Rwy 10 NA at night.</p> <p>▲</p>	

AWOS-3 123.925	POTOMAC APP CON 119.7 290.475	UNICOM 123.05 (CTAF) 0
--------------------------	---	----------------------------------



570	2000	CUTOP	VGSI and descent angles not coincident (VGSI Angle 4.00/TCH 57).	
▲	↷	△		
RW28		TRACN	PUGEE	
NGINI 1.3 NM to RW28		284°	309°	
720		1800	2000	
≤ 4.00° TCH 40				
1.3 NM		2.5 NM	4 NM	
CATEGORY	A	B	C	D
LP MDA	540-1	390 (400-1)		NA
LNAV MDA	620-1	470 (500-1)		NA
CIRCLING	820-1 670 (700-1)	960-1 810 (900-1)		NA

NE-3, 20 FEB 2025 to 20 MAR 2025

NE-3, 20 FEB 2025 to 20 MAR 2025