

(TERPZ8.TERPZ) 24193

AL-5212 (FAA)

MONTGOMERY COUNTY AIRPARK (GAI)

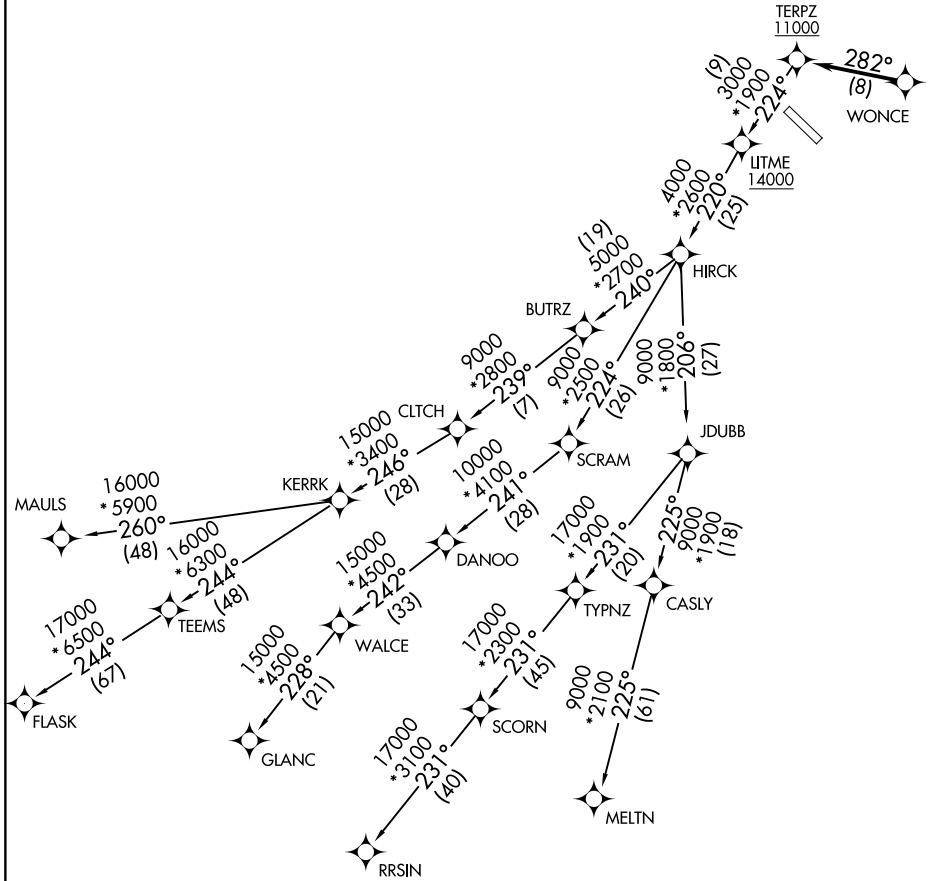
# TERPZ EIGHT DEPARTURE (RNAV)

GAITHERSBURG, MARYLAND

POTOMAC DEP CON  
128.7 307.9  
AWOS-3PT  
128.275  
CLNC DEL  
121.6  
UNICOM  
123.075 (CTAF)

RNAV 1 - DME/DME/IRU or GPS.  
RADAR required.

**TOP ALTITUDE:  
17000**



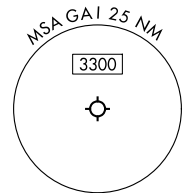
NE-3, 20 FEB 2025 to 20 MAR 2025

NE-3, 20 FEB 2025 to 20 MAR 2025

NOTE: Jet aircraft only.

TAKEOFF MINIMUMS:  
Rwy 14, 32: Standard.

NOTE: Chart not to scale.



# TERPZ EIGHT DEPARTURE (RNAV)

GAITHERSBURG, MARYLAND

(TERPZ8.TERPZ) 11JUL24

MONTGOMERY COUNTY AIRPARK (GAI)