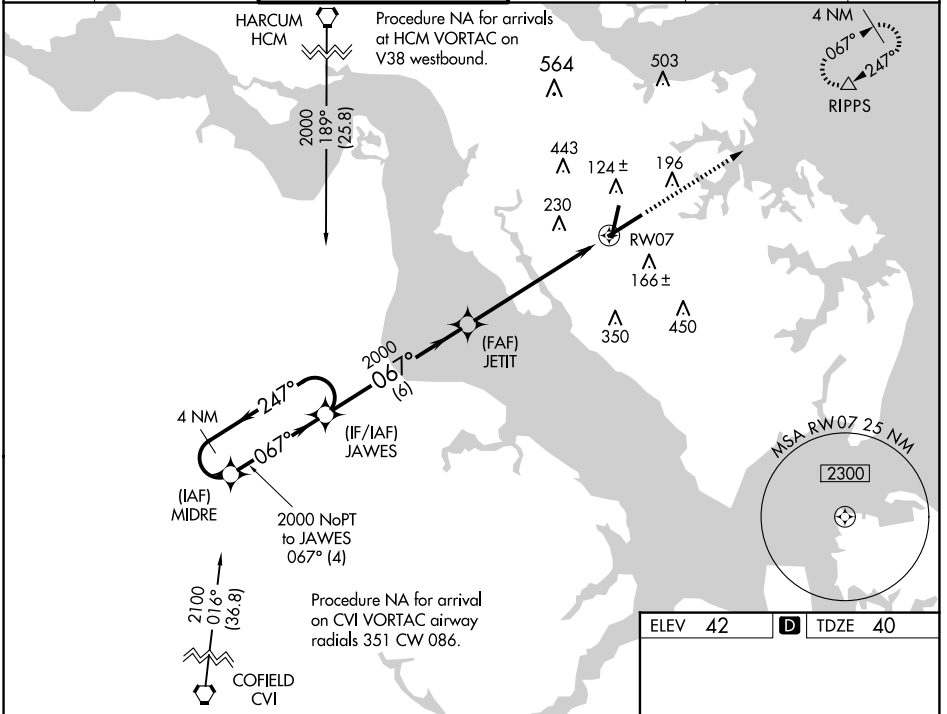


WAAS CH 45607 W07A	APP CRS 067°	Rwy Idg 8003 TDZE 40 Apt Elev 42
--	------------------------	---

RNAV (GPS) RWY 7

NEWPORT NEWS/WILLIAMSBURG INTL (PHF)

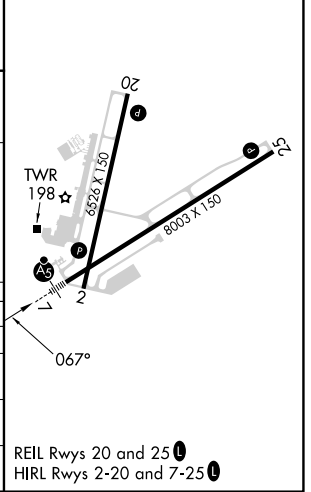
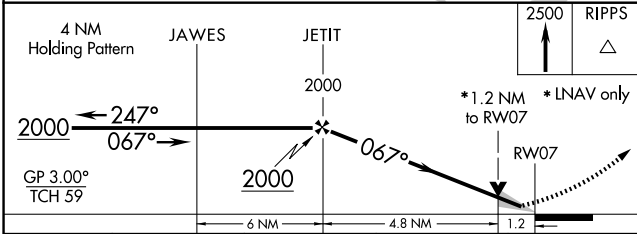
RNP APCH.		MALSR		MISSED APPROACH: Climb to 2500 direct RIPPS and hold.	
<p>▼ For uncompensated Baro-VNAV systems, LNAV/VNAV NA below -11°C or above 54°C.</p> <p>▲ For inop MALSR, increase LNAV/VNAV all Cats visibility to 1 3/8.</p>					
ATIS 128.65	NORFOLK APP CON 125.7 335.625	NEWPORT NEWS TOWER ★ 118.7 (CTAF) 0 257.9	GND CON 121.9 348.6	CLNC DEL 121.65 225.4	UNICOM 122.95



NE-3, 20 FEB 2025 to 20 MAR 2025

NE-3, 20 FEB 2025 to 20 MAR 2025

ELEV 42	D TDZE 40
---------	------------------



CATEGORY	A	B	C	D
LPV DA		243/24	203 (300-1/2)	
LNNAV/VNAV DA		474/50	434 (500-1)	
LNNAV MDA	480/24	440 (500-1/2)	480/40	440 (500-3/4)
C CIRCLING	520-1 478 (500-1)	540-1 498 (500-1)	760-2 718 (800-2)	780-2 1/4 738 (800-2 1/4)