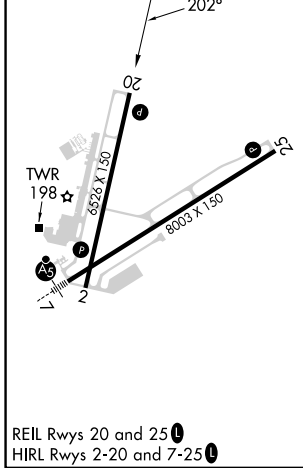
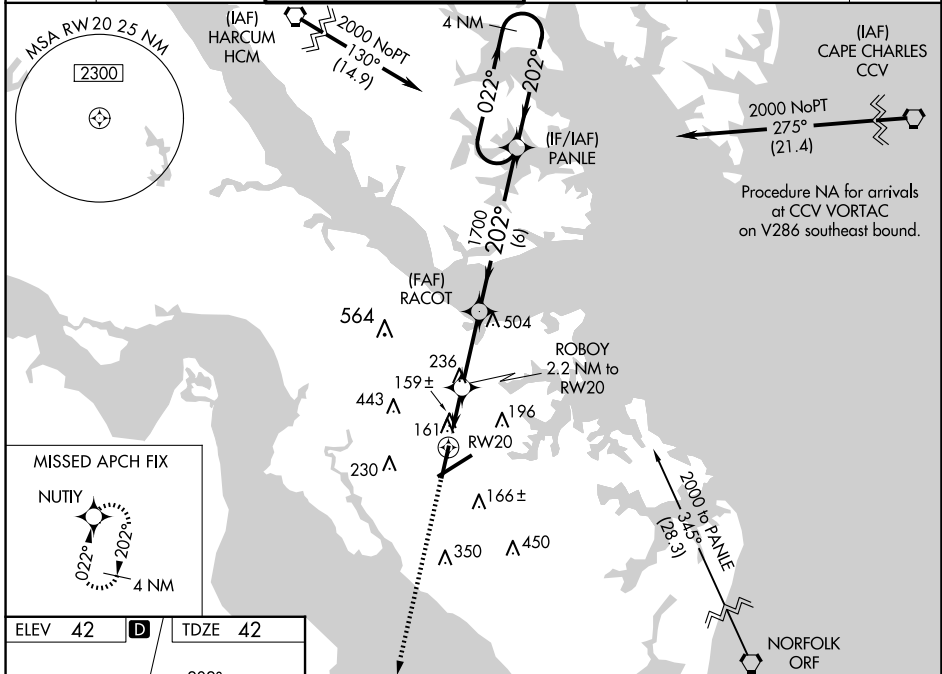


WAAS CH 97420 W20A	APP CRS 202°	Rwy Idg TDZE Apt Elev	6526 42 42
--	------------------------	-----------------------------	---------------------------------------

RNAV (GPS) RWY 20
NEWPORT NEWS/WILLIAMSBURG INTL (PHF)

RNP APCH. ▼ For uncompensated Baro-VNAV systems, LNAV/VNAV NA below -11°C or above 54°C. ▲ Rwy 20 helicopter visibility reduction below ¾ SM NA.		MISSED APPROACH: Climb to 2300 direct NUTY and hold.			
ATIS 128.65	NORFOLK APP CON 125.7 335.625	NEWPORT NEWS TOWER ★ 118.7(CTAF) 0 257.9	GND CON 121.9 348.6	CLNC DEL 121.65 225.4	UNICOM 122.95



ELEV 42	D	TDZE 42		
2300 NUTY	RACOT 1700	PANLE 4 NM Holding Pattern		
* LNAV only * 1.1 NM to RWY 20	ROBOY 2.2 NM to RWY 20	2000		
RWY 20	* 780	GP 3.00° TCH 42		
1.1 NM	1.1 NM	2.8 NM		
CATEGORY	A	B	C	D
LPV DA	379-1½ 337 (400-1½)			
LNAV/VNAV DA	474-1½ 432 (500-1½)			
LNAV MDA	440-1	398 (400-1)	440-1½	398 (400-1½)
C CIRCLING	520-1 478 (500-1)	540-1 498 (500-1)	760-2 718 (800-2)	780-2¼ 738 (800-2¼)

NE-3, 20 FEB 2025 to 20 MAR 2025

NE-3, 20 FEB 2025 to 20 MAR 2025