


LOC/DME I-PHF <b>110.1</b> Chan 38	APP CRS <b>067°</b>	Rwy Idg TDZE Apt Elev	<b>8003</b> <b>40</b> <b>42</b>
--	------------------------	-----------------------------	---------------------------------------

# ILS or LOC RWY 7

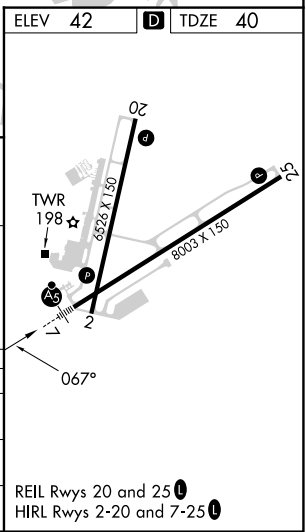
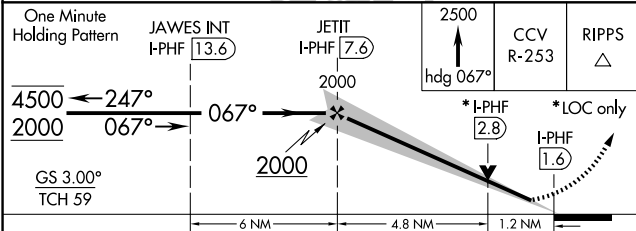
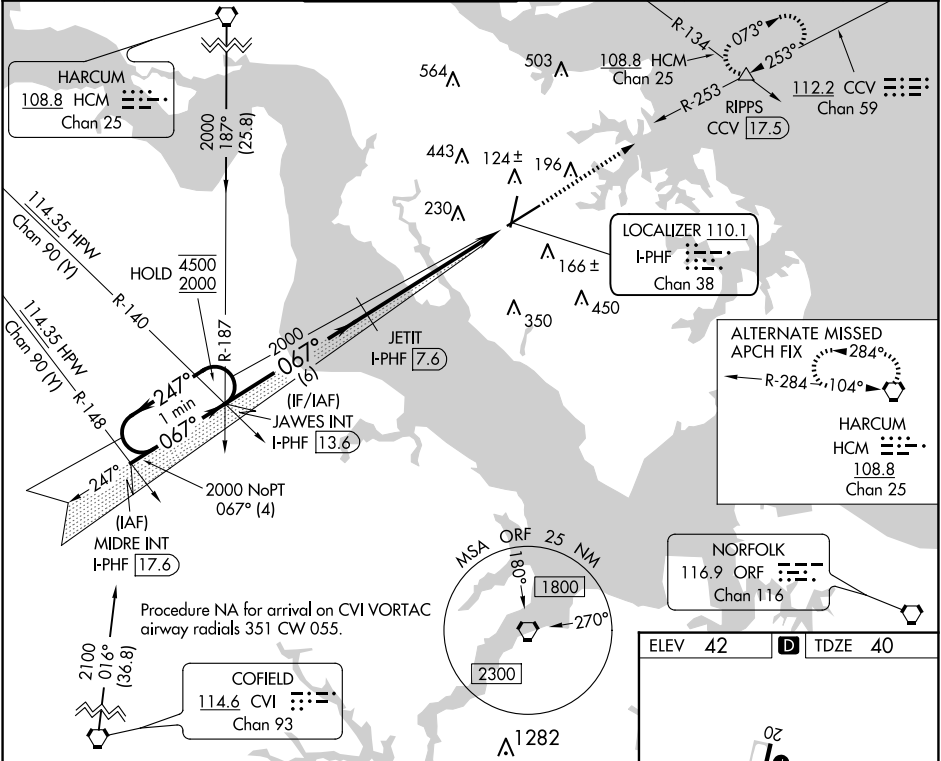
NEWPORT NEWS/WILLIAMSBURG INTL (PHF)

DME required.

**A** # RVR 1800 authorized with use of FD or AP or HUD to DA.

MALSR  MISSED APPROACH: Climb to 2500 on heading 067° and on CCV VORTAC R-253 to RIPPS INT/CCV 17.5 DME and hold, continue climb-in-hold to 2500.

ATIS <b>128.65</b>	NORFOLK APP CON <b>125.7 335.625</b>	NEWPORT NEWS TOWER* <b>118.7 (CTAF) 0 257.9</b>	GND CON <b>121.9 348.6</b>	CLNC DEL <b>121.65 225.4</b>	UNICOM <b>122.95</b>
-----------------------	---	--	-------------------------------	---------------------------------	-------------------------



CATEGORY	A	B	C	D
S-ILS 7 #	240/24		200 (200-½)	
S-LOC 7	480/24	440 (500-½)	480/40	440 (500-¾)
<b>C</b> CIRCLING	520-1 478 (500-1)	540-1 498 (500-1)	760-2 718 (800-2)	780-2¼ 738 (800-2¼)

NE-3, 20 FEB 2025 to 20 MAR 2025

NE-3, 20 FEB 2025 to 20 MAR 2025