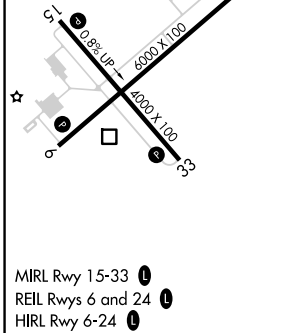
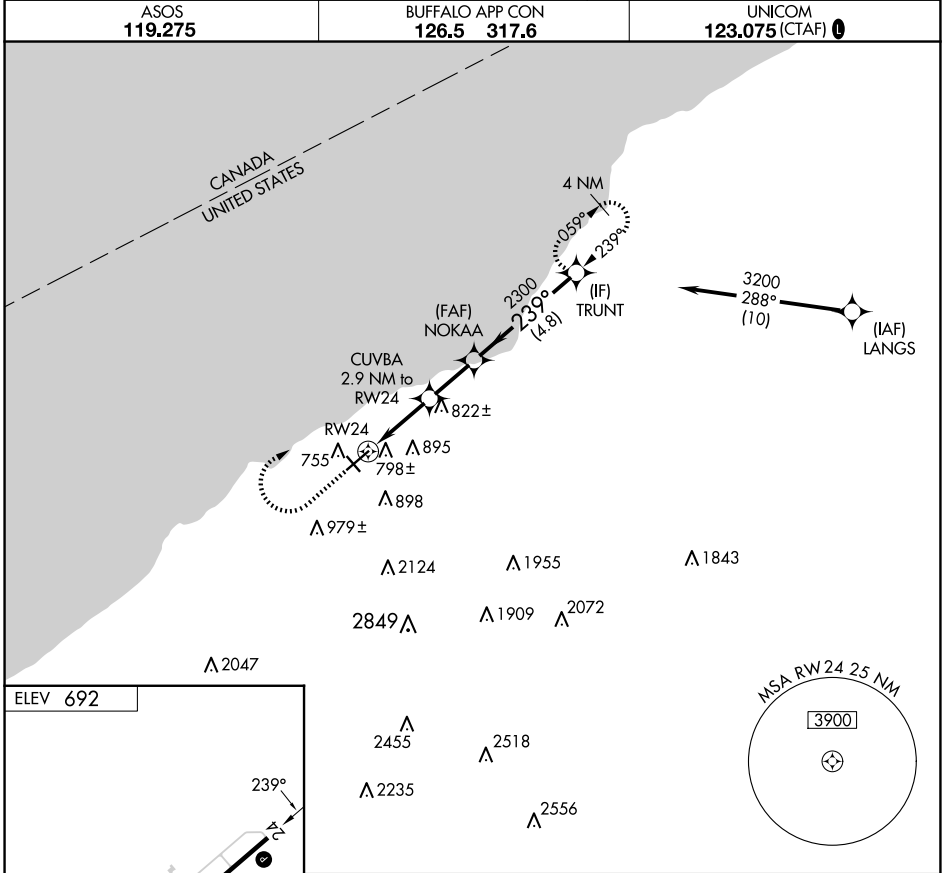


APP CRS	Rwy Idg	N/A
239°	TDZE	N/A
	Apt Elev	692

RNAV (GPS)-A

CHAUTAUGUA COUNTY/DUNKIRK (DKK)

RNP APCH - GPS.	<p>⚠ Circling Cat D NA southeast of Rwy 6 and southwest of Rwy 33. ⚠ Circling Rwy 6, 24, 33 NA at night. ❄ -22°C Rwy 6, 24, 33 helicopter visibility reduction below 1 SM NA.</p>	<p>MISSED APPROACH: Climb to 1900 then climbing right turn to 3200 direct TRUNT and hold.</p>
ASOS 119.275		



MIRL Rwy 15-33 (L)
 REIL Rws 6 and 24 (L)
 HIRL Rwy 6-24 (L)

	1900	3200	TRUNT	Visual Segment - Obstacles.
				TRUNT
				3200
				2300
				1440
				2.9 NM
				2.1 NM
				4.8 NM
CATEGORY	A	B	C	D
CIRCLING	1200-1 508 (600-1)	1320-1 628 (700-1)	1640-2¾ 948 (1000-2¾)	2140-3 1448 (1500-3)

RNAV (GPS)-A

NE-2, 20 FEB 2025 to 20 MAR 2025

NE-2, 20 FEB 2025 to 20 MAR 2025