

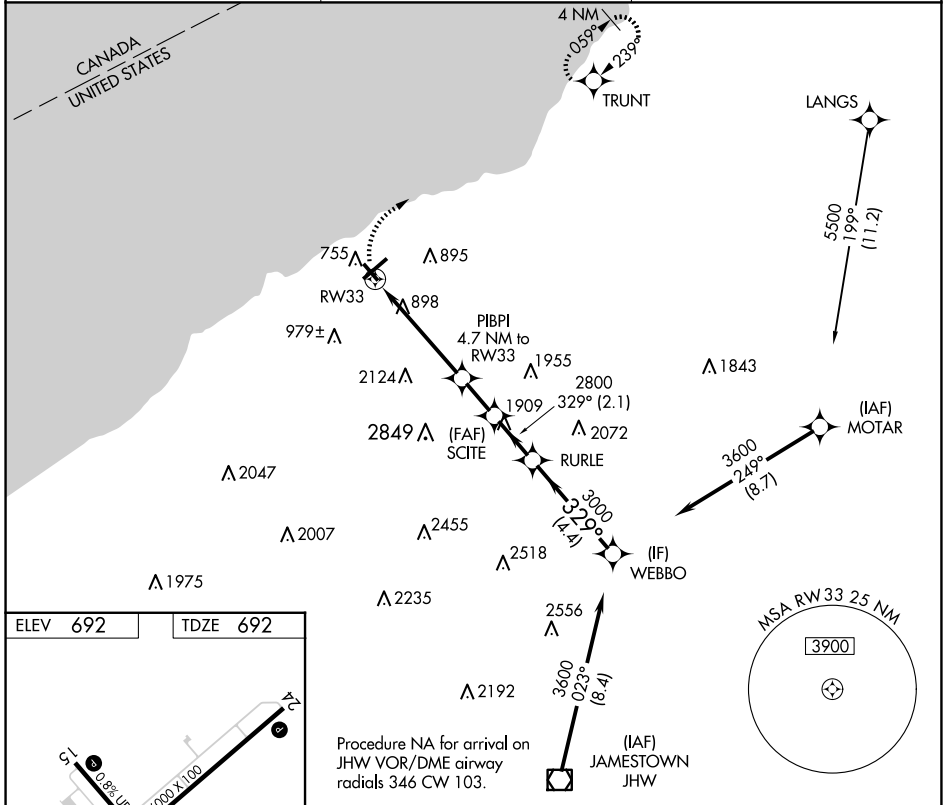
APP CRS	Rwy Idg	4000
329°	TDZE	692
	Apt Elev	692

RNAV (GPS) RWY 33

CHAUTAUQUA COUNTY/DUNKIRK (DKK)

RNP APCH.	<p>⚠ Circling Cat D NA southeast of Rwy 6 and southwest of Rwy 33. Rwy 33 helicopter visibility reduction below 1 SM NA. Straight-In Rwy 33 NA at night, Circling Rwy 6, 24, 33 NA at night.</p>	MISSED APPROACH: Climbing right turn to 3200 direct TRUNT and hold.
-----------	--	---

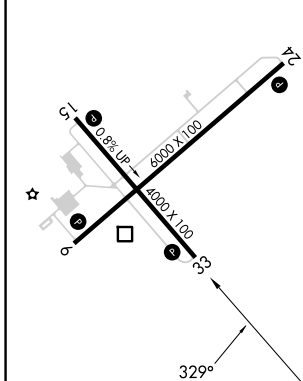
ASOS 119.275	BUFFALO APP CON 126.5 317.6	UNICOM 123.075 (CTAF) 0
------------------------	---------------------------------------	-----------------------------------



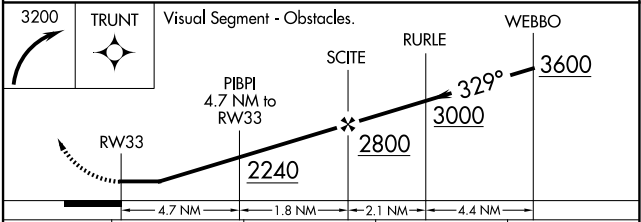
NE-2, 20 FEB 2025 to 20 MAR 2025

NE-2, 20 FEB 2025 to 20 MAR 2025

ELEV 692	TDZE 692
----------	----------



- MIRL Rwy 15-33
- REIL Rws 6 and 24
- HIRL Rwy 6-24



CATEGORY	A	B	C	D
LNNAV MDA	1860-1¼ 1168 (1200-1¼)	1860-1½ 1168 (1200-1½)	1860-3	1168 (1200-3)
CIRCLING	1860-1¼ 1168 (1200-1¼)	1860-1½ 1168 (1200-1½)	1860-3 1168 (1200-3)	2140-3 1448 (1500-3)