

| | | | |
|--|------------------------|-----------------------------|---|
| WAAS CH 78019 W22A | APP CRS 221° | Rwy Idg TDZE Apt Elev | 5001 270 288 |
|--|------------------------|-----------------------------|---|

RNAV (GPS) RWY 22

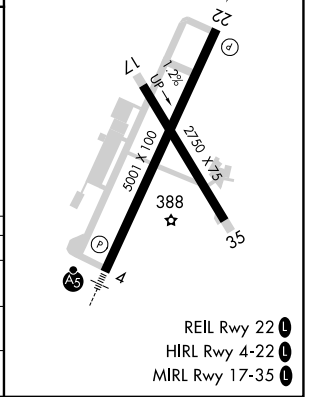
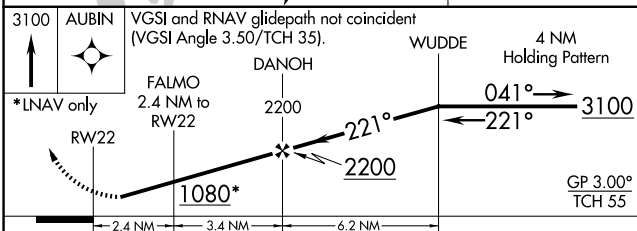
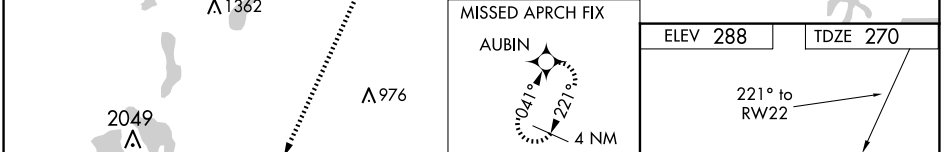
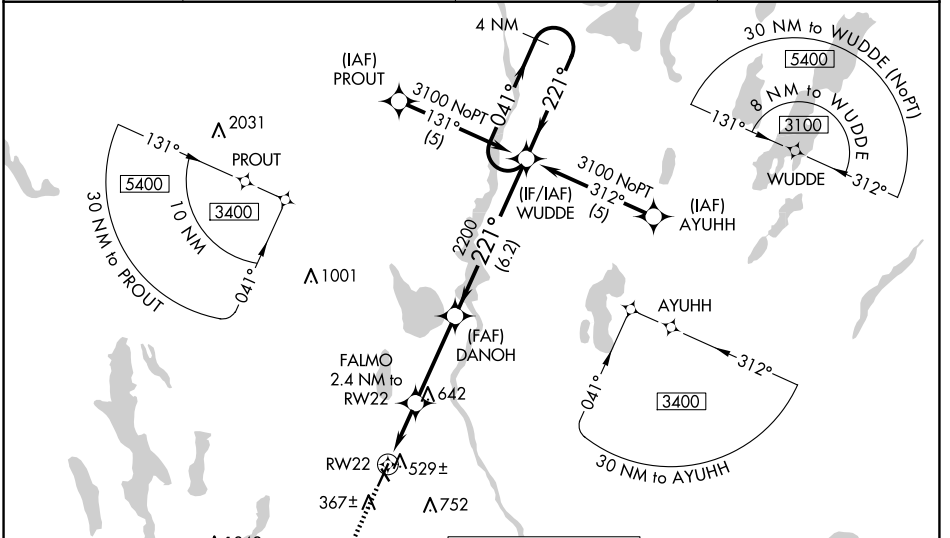
AUBURN/LEWISTON MUNI (LEW)

RNP APCH.

⚠ Procedure NA at night. For uncompensated Baro-VNAV systems, LNAV/VNAV NA below -15°C or above 48°C. Rwy 22 helicopter visibility reduction below 1 SM NA. When local altimeter setting not received, use Augusta altimeter setting: increase LPV all Cats DA to 617 feet and all Cats visibility ½ SM; LNAV/VNAV all Cats DA to 938 feet and all Cats visibility ½ SM; increase all MDA 80 feet and LNAV Cat C/D visibility ½ SM. Baro-VNAV NA when using Augusta altimeter setting.

MISSED APPROACH: Climb to 3100 direct AUBIN and hold.

| | | | |
|----------------------------|--|---------------------------|---------------------------------|
| AWOS-3PT 118.025 | PORTLAND APP CON ★ 125.5 353.9 | CLNC DEL 124.05 | UNICOM 122.8 (CTAF) 0 |
|----------------------------|--|---------------------------|---------------------------------|



| CATEGORY | A | B | C | D |
|--------------|-------|-------------|-------------|-----------------|
| LPV DA | | 546-1 | 276 (300-1) | |
| LNAV/VNAV DA | | 867-2 | 597 (600-2) | |
| LNAV MDA | 780-1 | 510 (500-1) | 780-1 3/8 | 510 (500-1 3/8) |

NE-1, 20 FEB 2025 to 20 MAR 2025

NE-1, 20 FEB 2025 to 20 MAR 2025