

WAAS CH 99732 W10A	APP CRS 101°	Rwy Idg 8005 TDZE 38 Apt Elev 40
--	------------------------	---

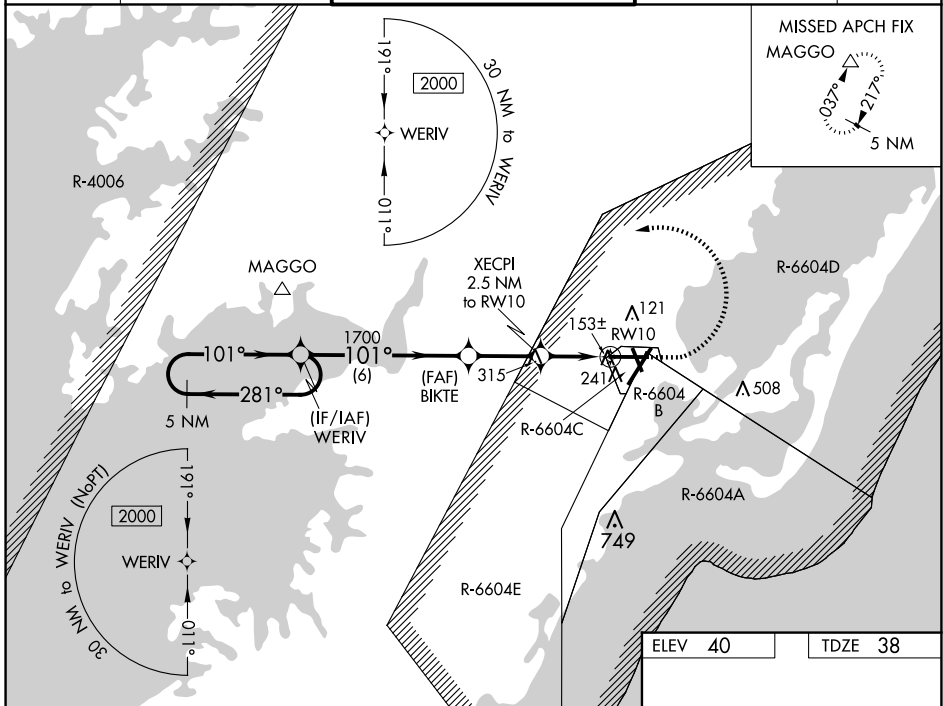
RNAV (GPS) RWY 10

WALLOPS FLIGHT FACILITY (WAL)

▽ DME/DME RNP -0.3 NA. Rwy 10 helicopter visibility reduction below 3/4 SM NA. When local altimeter setting not received, use Salisbury altimeter setting and increase all DA 60 feet and all visibilities 1/4 SM. Increase all MDA 60 feet and all Cat C and D visibilities 1/4 SM. Baro-VNAV and VDP NA when using Salisbury altimeter setting. For uncompensated Baro-VNAV systems, LNAV/VNAV NA below -11°C (13°F) or above 54°C (130°F).

MISSED APPROACH: Climb to 700 then climbing left turn to 2000 direct MAGGO and hold.

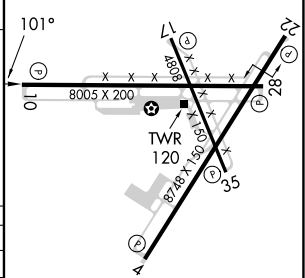
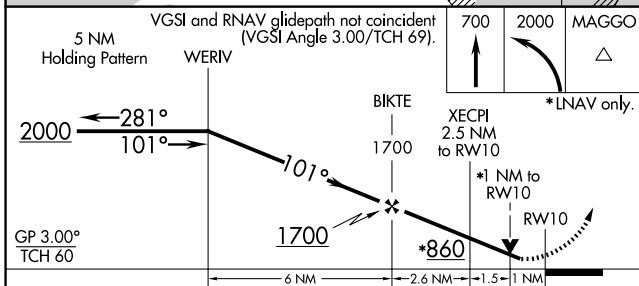
ASOS 119.175	PATUXENT APP CON ★ 127.95 314.0	WALLOPS TOWER ★ 126.5 (CTAF) 306.975 (CTAF)	GND CON 127.875 269.325	CLNC DEL 121.7
------------------------	---	---	-----------------------------------	--------------------------



NE-3, 20 FEB 2025 to 20 MAR 2025

NE-3, 20 FEB 2025 to 20 MAR 2025

ELEV 40	TDZE 38
----------------	----------------



CATEGORY	A	B	C	D
LPV DA	330-1	292 (300-1)		
LNAV/VNAV DA	443-1 1/4	405 (500-1 1/4)		
LNAV MDA	420-1 382 (400-1)	420-1 1/8 382 (400-1 1/8)		
CIRCLING	600-1 560 (600-1)	620-1 1/2 580 (600-1 1/2)	860-2 3/4 820 (900-2 3/4)	

REIL all Rwys
HIRL Rws 4-22, 10-28 and 17-35