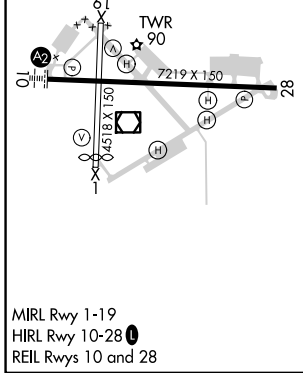
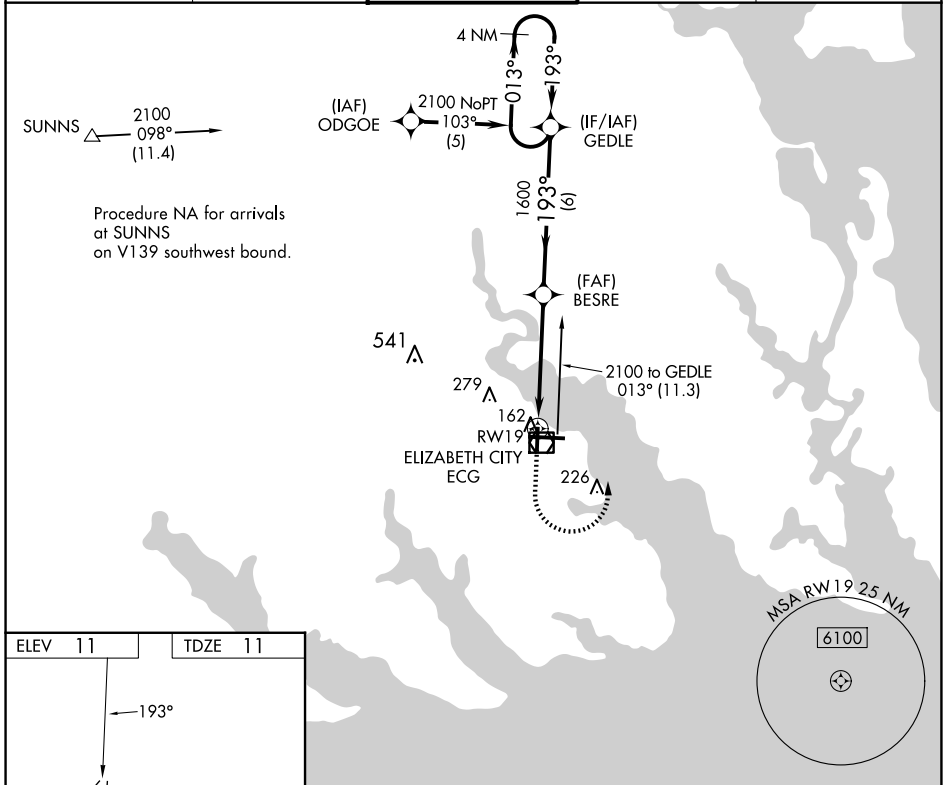


APP CRS	Rwy Idg	4518
193°	TDZE	11
	Apt Elev	11

RNAV (GPS) RWY 19

ELIZABETH CITY CG AIR STATION/RGNL (ECG)

RNP APCH.		MISSED APPROACH: Climb to 900 then climbing left turn to 2100 direct GEDLE and hold.		
ASOS	NORFOLK APP CON	ELIZABETH CITY TOWER★	GND CON	UNICOM
124.375	119.55 269.425	120.5 (CTAF) 355.6	121.9	122.95



900	2100	GEDLE	VGS1 and descent angles not coincident (VGS1 Angle 2.75/TCH 30).		4 NM Holding Pattern
		BESRE	GEDLE		
1.5	3.3	6			
CATEGORY	A	B	C	D	
LNAV MDA	480-1	469 (500-1)	480-1 ³ / ₈	469 (500-1 ³ / ₈)	
C CIRCLING	480-1	469 (500-1)	640-1 ³ / ₄	640-2 629 (700-1 ³ / ₄) 629 (700-2)	

SE-2, 20 FEB 2025 to 20 MAR 2025

SE-2, 20 FEB 2025 to 20 MAR 2025