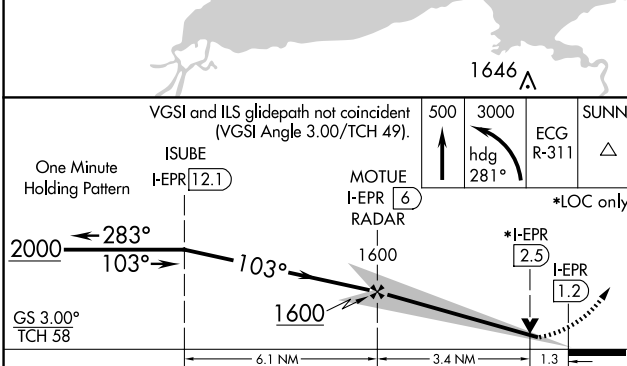
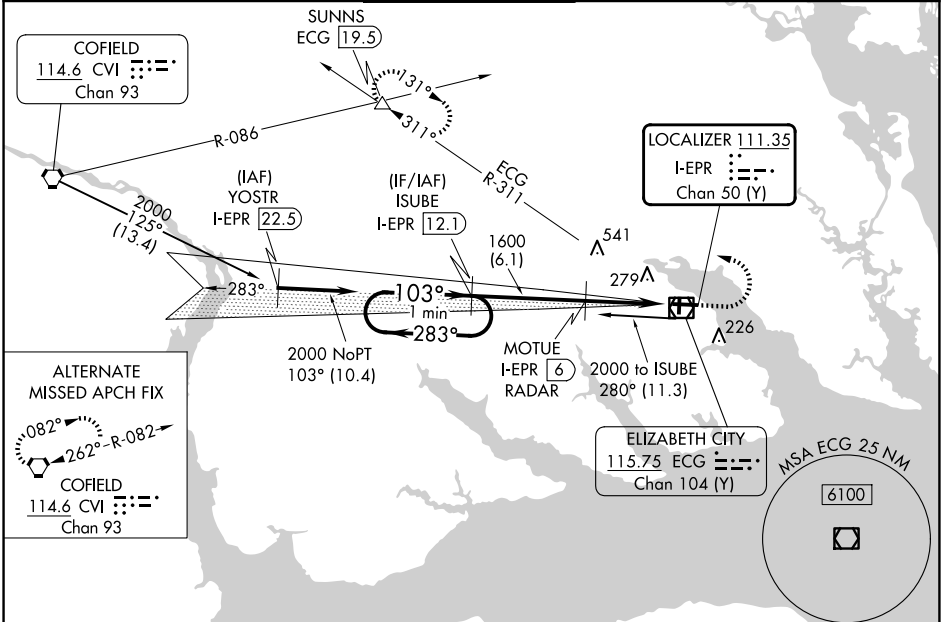


LOC/DME I-EPR 111.35 Chan 50 (Y)	APP CRS 103°	Rwy Idg 7219 TDZE 11 Apt Elev 11
--	------------------------	---

ILS or LOC RWY 10

ELIZABETH CITY CG AIR STATION/RGNL (ECG)

DME required.		SALS	MISSED APPROACH: Climb to 500 then climbing left turn to 3000 on heading 281° and ECG VOR/DME R-311 to SUNNS INT/ECG 19.5 DME and hold.	
<p>Procedure NA when tethered balloon located approximately 2 miles southeast of airport is flying.</p>				
ASOS 124.375	NORFOLK APP CON 119.55 269.425	ELIZABETH CITY TOWER ★ 120.5 (CTAF) 355.6	GND CON 121.9	UNICOM 122.95



ELEV 11	TDZE 11
<p>VGSI and ILS glidepath not coincident (VGSI Angle 3.00/TCH 49).</p>	
One Minute Holding Pattern	ISUBE I-EPR 12.1
MOTUE I-EPR 6	RADAR
ECG R-311	SUNNS
hdg 281°	*LOC only.
*I-EPR 2.5	I-EPR 1.2
61	TWR 90
7219 X 150	7219 X 150
0.4518 X 150	
<p>MRL Rwy 1-19 HIRL Rwy 10-28 REIL Rwys 10 and 28</p>	
FAF to MAP 4.7 NM	
Knots	60 90 120 150 180
Min:Sec	4:42 3:08 2:21 1:53 1:34

CATEGORY	A	B	C	D
S-ILS 10	261-3/4		250 (300-3/4)	
S-LOC 10	460-1 449 (500-1)		460-1 3/8 449 (500-1 3/8)	
CIRCLING	480-1 469 (500-1)		640-1 3/8 629 (700-1 3/8) 640-2 629 (700-2)	

SE-2, 20 FEB 2025 to 20 MAR 2025

SE-2, 20 FEB 2025 to 20 MAR 2025