

DOVER, DELAWARE

RNAV (GPS) RWY 32

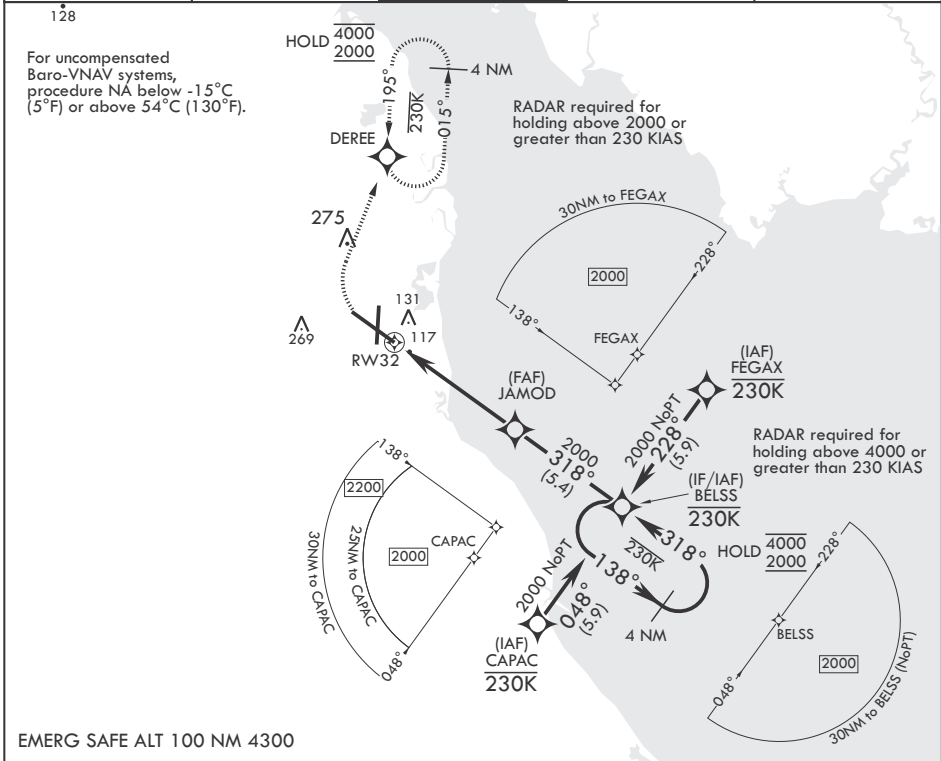
WAAS CH 91360 W32A	APCH CRS 318°	Rwy ldg 12,903	TDZE 26
		Arpt Elev 29	

(USAF)

DOVER AFB (KDOV)

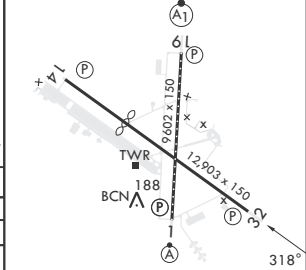
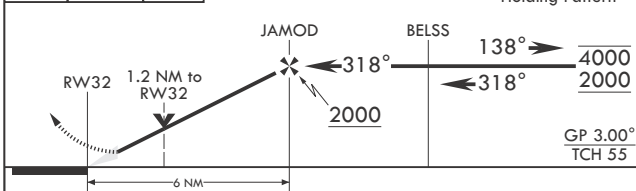
RNP APCH-GPS MISSED APPROACH: (Do not exceed 230 KIAS) Climb to 600 then climbing right turn to 2000 direct DEREÉ and hold.

ATIS	APP CON	TOWER	GND CON	CLNC DEL
127.825 273.5	132.425 257.875	126.35 279.625	118.875 225.4	125.55 289.4



600 crs 318° 2000 DEREÉ VGSI and RNAV glidepath not coincident (VGSI Angle 2.93/TCH 69).

ELEV 29 Rwy 14 ldg 8652' TDZE 26



CATEGORY	A	B	C	D
LPV DA	226-¾	200	(200-¾)	
LNAV/VNAV DA	277-¾ 251 (300-¾)	316-⅞ 290 (300-⅞)	326-⅞ 300 (300-⅞)	
LNAV MDA	460-1 434 (500-1)	460-1¼ 434 (500-1¼)		
CRCLING	540-1 511 (600-1)	620-1½ 591 (600-1½)	620-2 591 (600-2)	

HIRL all Rwys REIL Rwy 32 TDZL/CL Rwy 1

DOVER, DELAWARE
Amdt 6 26DEC24

39°08'N - 75°28'W

DOVER AFB (KDOV)

RNAV (GPS) RWY 32

NE-3, 20 FEB 2025 to 20 MAR 2025

NE-3, 20 FEB 2025 to 20 MAR 2025