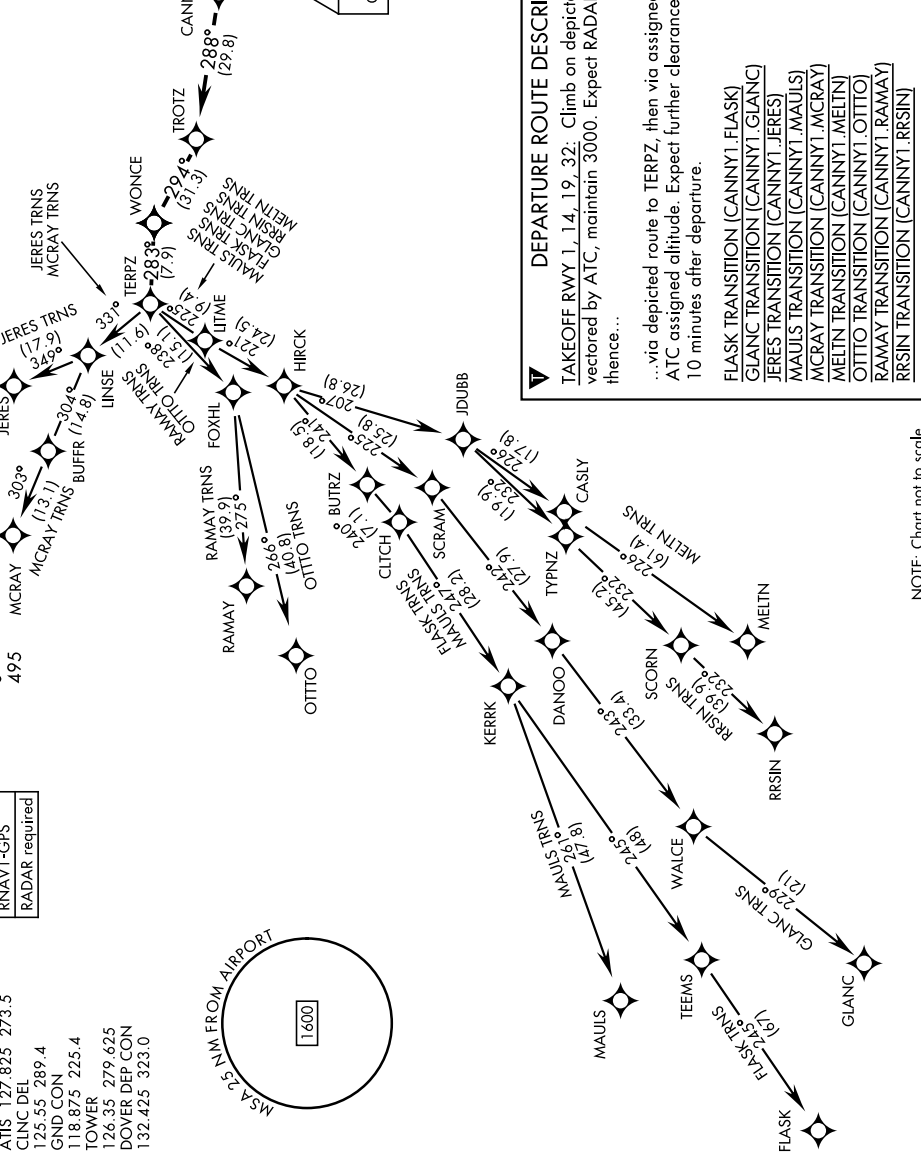
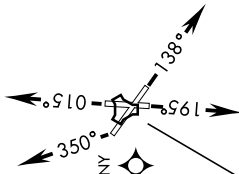


CANNY ONE DEPARTURE (RNAV)(CANNY1.CNY)

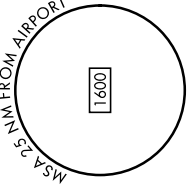
[USAF]

TOP ALTITUDE
3000



RNAV1-GPS
RADAR required

ATIS 127.825 273.5
 CLNC DEL 125.55 289.4
 GND CON 118.875 225.4
 TOWER 126.35 279.625
 DOVER DEP CON 132.425 323.0



DEPARTURE ROUTE DESCRIPTION

TAKEOFF RWY 1, 14, 19, 32: Climb on depicted heading until vectored by ATC; maintain 3000. Expect RADAR vectors to CANNY, thence...

...via depicted route to TERPZ, then via assigned transition. Maintain ATC assigned altitude. Expect further clearance to filed altitude within 10 minutes after departure.

FLASK TRANSITION (CANNY1.FLASK)
GLANC TRANSITION (CANNY1.GLANC)
JERES TRANSITION (CANNY1.JERES)
MALUS TRANSITION (CANNY1.MALUS)
MCRAY TRANSITION (CANNY1.MCRAY)
MELTN TRANSITION (CANNY1.MELTN)
OTTO TRANSITION (CANNY1.OTTO)
RAMAY TRANSITION (CANNY1.RAMAY)
RRSIN TRANSITION (CANNY1.RRSIN)

NE-3, 20 FEB 2025 to 20 MAR 2025

NOTE: Chart not to scale

NE-3, 20 FEB 2025 to 20 MAR 2025

CANNY ONE DEPARTURE (RNAV)(CANNY1.CNY)

Amtd 3 11JUL24