

SPOKANE, WASHINGTON

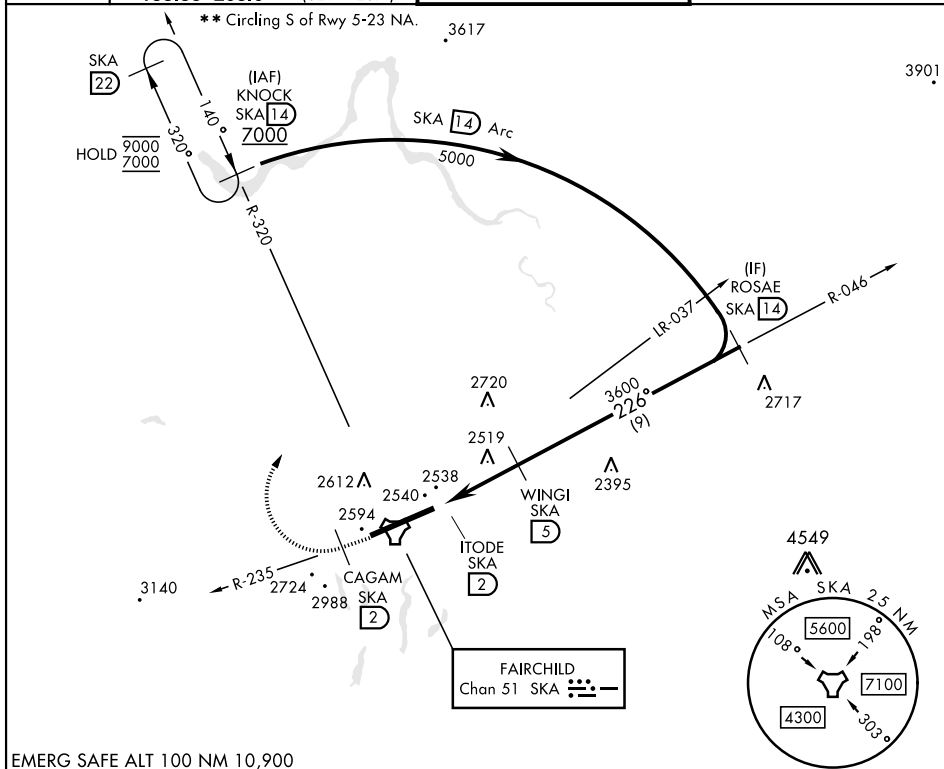
TACAN RWY 23

TACAN SKA Chan 51	APCH CRS 226°	Rwy Idg 13,899 TDZE 2423 Arprt Elev 2462
--------------------------	----------------------	---

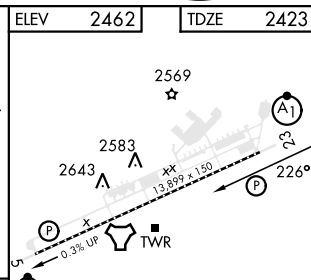
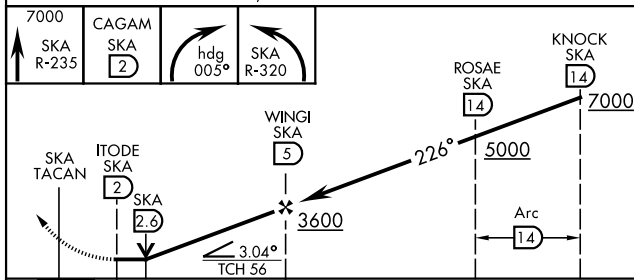
[USAF]

FAIRCHILD AFB (KSKA)

RADAR required for KNOCK holding.		ALSIF-1	MISSED APPROACH: Climb to 7000 via SKA TACAN R-235. At CAGAM, turn right hdg 005° to intcp SKA R-320 to KNOCK and hold, cont climb in hold to 7000.	
<p>▼ * When ALS inop, increase CAT AB RVR to 55 and vis to 1 mile, CAT CDE RVR to 60, vis to 1½ miles.</p>		(A1)		
ATIS 257.625	SPOKANE APP CON 123.75 282.25 133.35 263.0 (208° - 028°) (029° - 207°)	TOWER 120.35 233.7	GND CON 123.6 275.8	



EMERG SAFE ALT 100 NM 10,900



CATEGORY	A	B	C	D	E
S-23 *	2820/24 397 (400-½)	2820/35 397 (400-¾)	2820/35 397 (400-¾)	2820/35 397 (400-¾)	2820/35 397 (400-¾)
CIRCLING **	2900-1 438 (500-1)	2920-1 458 (500-1)	3040-1½ 578 (600-1½)	3040-2 578 (600-2)	3600-3 1138 (1200-3)

HIRL Rwy 5-23
TDZL/CL Rwy 5

SPOKANE, WASHINGTON

47°37'N-117°39'W

FAIRCHILD AFB (KSKA)

Amtd 4 03NOV22

TACAN RWY 23

NW-1, 20 FEB 2025 to 20 MAR 2025

NW-1, 20 FEB 2025 to 20 MAR 2025