

SPOKANE, WASHINGTON

# RNAV (GPS) RWY 5

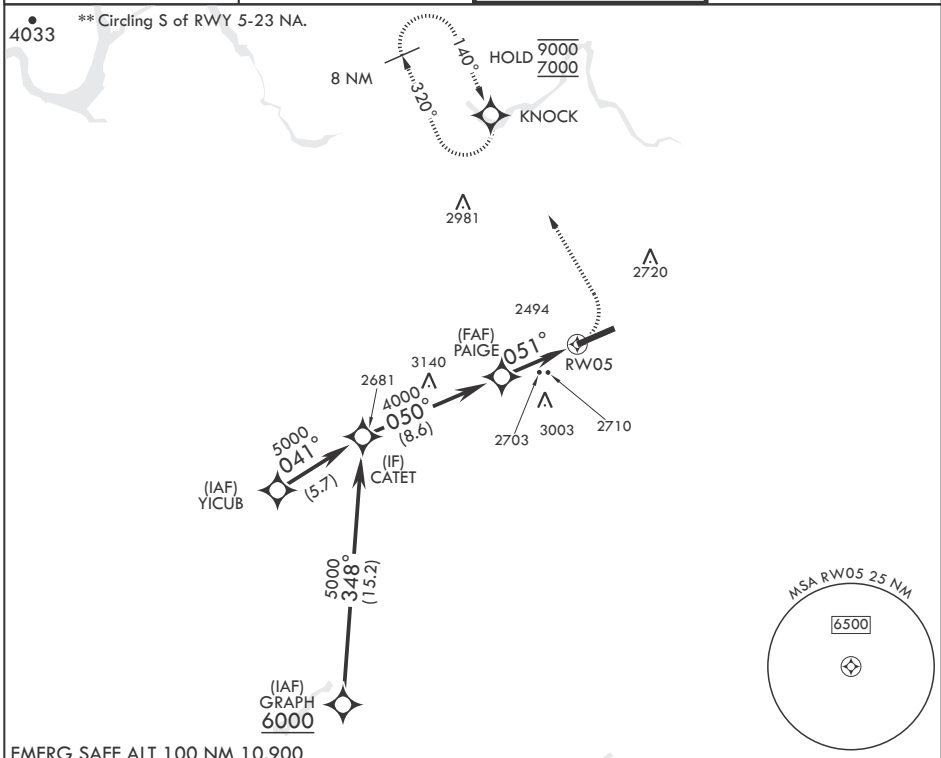
APCH CRS	Rwy Idg	<b>13,899</b>
<b>051°</b>	TDZE	<b>2462</b>
	Arprt Elev	<b>2462</b>

(USAF)

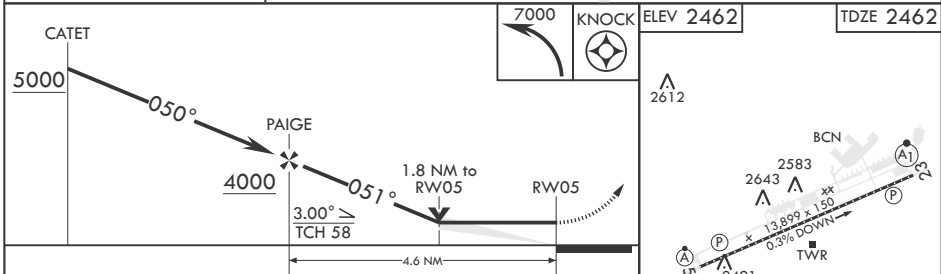
FAIRCHILD AFB (KSKA)

RNP APCH	ALSF-2	MISSED APPROACH: Climbing left turn to 7000 direct KNOCK and hold, continue climb in hold to 7000.
RADAR required for KNOCK holding.		
* When ALS inop, increase CAT A RVR to 55, vis to 1 mile, CAT B RVR to 60, vis to 1 1/4 miles, and CAT CDE vis to 2 1/2 miles.		

ATIS <b>257.625</b>	SPOKANE APP CON <b>123.75 282.25 (208°-028°)</b> <b>133.35 263.0 (029°-207°)</b>	TOWER <b>120.35 233.7</b>	GND CON <b>123.6 275.8</b>
------------------------	--	------------------------------	-------------------------------



EMERG SAFE ALT 100 NM 10,900



CATEGORY	A	B	C	D	E
LNNAV MDA*	3100/24	638 (700-½)	3100-1⅓	638	(700-1⅓)
<b>C</b> CIRCLING**	3100-1	638 (700-1)	3100-1¾ 638 (700-1¾)	3100-2 638 (700-2)	3600-3 1138 (1200-3)

HIRL all Rwys  
TDZL/CL Rwy 5

SPOKANE, WASHINGTON

47°37'N - 117°39'W

FAIRCHILD AFB (KSKA)

Amdt 2 03NOV22

# RNAV (GPS) RWY 5

NW-1, 20 FEB 2025 to 20 MAR 2025

NW-1, 20 FEB 2025 to 20 MAR 2025