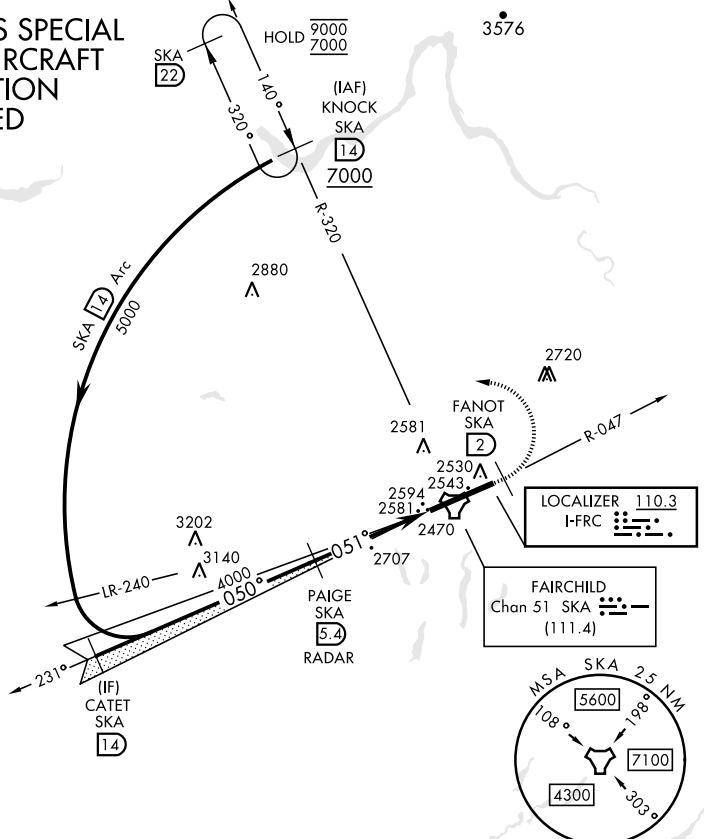


SPOKANE, WASHINGTON

ILS RWY 5 (CAT II)

| | | | | |
|-----------------------------------|--|--|-------------------------------|---|
| LOC I-FRC 110.3 | APCH CRS 051° | Rwy Idg 13,899 TDZE 2462 Arpt Elev 2462 | [USAF] | FAIRCHILD AFB (KSKA) |
| RADAR required for KNOCK holding. | | | ALSF-2 | MISSED APPROACH: Climb to 7000 via SKA TACAN R-047. At FANOT turn left hdg 275° to intcp SKA R-320 to KNOCK and hold, continue climb in hold to 7000. |
| ATIS 257.625 | SPOKANE APP CON 123.75 282.25 (208° - 028°) 133.35 263.0 (029° - 207°) | TOWER 120.35 233.7 | GND CON 123.6 275.8 | |

CATEGORY II ILS SPECIAL AIRCREW & AIRCRAFT CERTIFICATION REQUIRED



| | | | | | | |
|------------------------------|----------------|-----------------------|----------------|---------------|-----------|---------------|
| EMERG SAFE ALT 100 NM 10,900 | | | | | ELEV 2462 | TDZE 2462 |
| KNOCK SKA (14) | CATET SKA (14) | PAIGE SKA (5.4) RADAR | 7000 SKA R-047 | FANOT SKA (2) | hdg 275° | SKA R-320 |
| 7000 | Intcp Lczt | 4000 | 5000 | 4000 | 050° | 051° |
| GS 3.00° TCH 58 | Arc (14) | 4000 | 4.6 NM | 1192' | | |
| CATEGORY | A | B | C | D | E | HIRL Rwy 5-23 |
| S-ILS 5 | RA 98/12 | | 100 | DA 2562 | | TDZL/CL Rwy 5 |

SPOKANE, WASHINGTON 47°37'N-117°39'W FAIRCHILD AFB (KSKA)

Amtd 2 03NOV22

ILS RWY 5 (CAT II)

NW-1, 20 FEB 2025 to 20 MAR 2025

NW-1, 20 FEB 2025 to 20 MAR 2025