

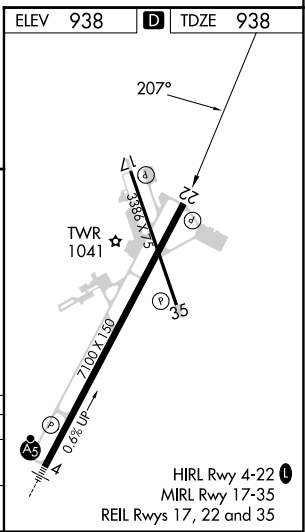
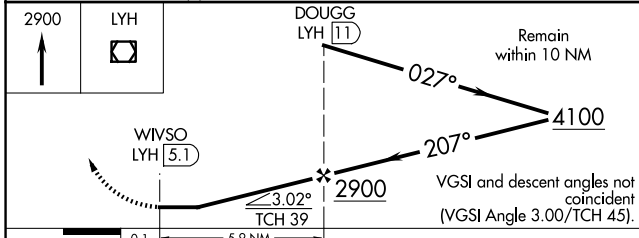
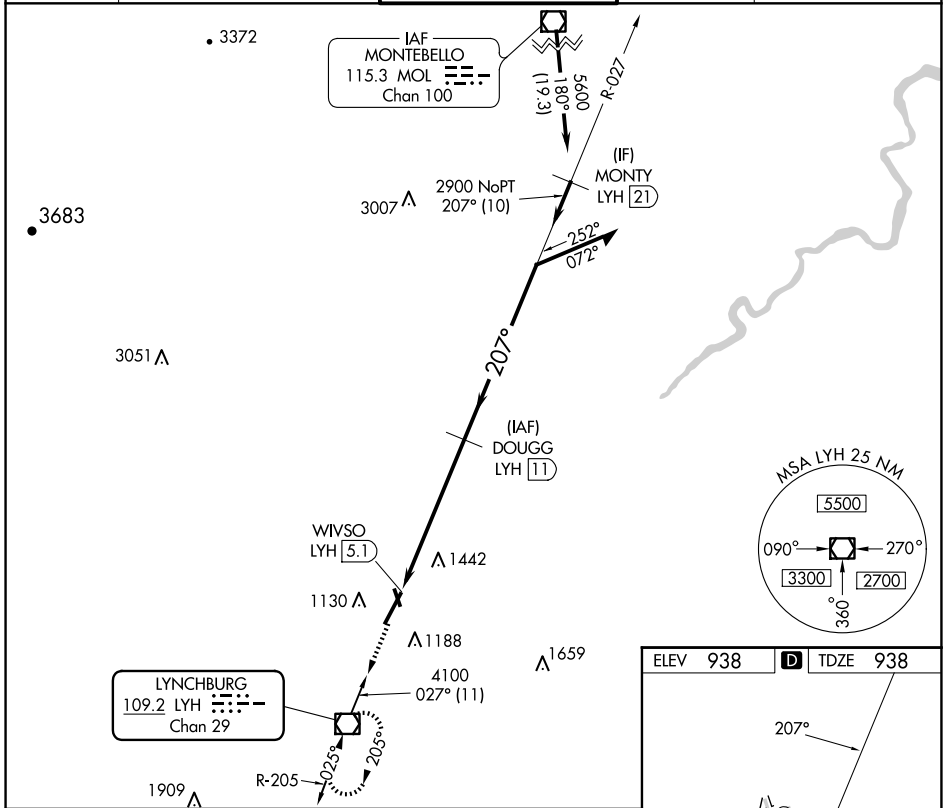
VOR/DME LYH	Rwy Idg	<b>7100</b>
<b>109.2</b>	TDZE	<b>938</b>
Chan <b>29</b>	Apt Elev	<b>938</b>

# VOR RWY 22

LYNCHBURG RGNL/PRESTON GLENN FLD (LYH)

DME required.	MISSED APPROACH: Climb to 2900 direct LYH VOR/DME and hold.
▼ Rwy 22 helicopter visibility reduction below 3/4 SM NA. ▲ Circling Rwy 17 NA at night.	

ATIS <b>119.8</b>	ROANOKE APP CON <b>135.0 254,325</b>	LYNCHBURG TOWER ★ <b>127.65 (CTAF) 0 257.8</b>	GND CON <b>121.9</b>	UNICOM <b>122.95</b>
----------------------	---	---	-------------------------	-------------------------



NE-3, 20 FEB 2025 to 20 MAR 2025

NE-3, 20 FEB 2025 to 20 MAR 2025

# VOR RWY 22