

WAAS CH 97705 W22A	APP CRS 216°	Rwy Idg TDZE Apt Elev	7100 938 938
--	------------------------	-----------------------------	---

RNAV (GPS) RWY 22

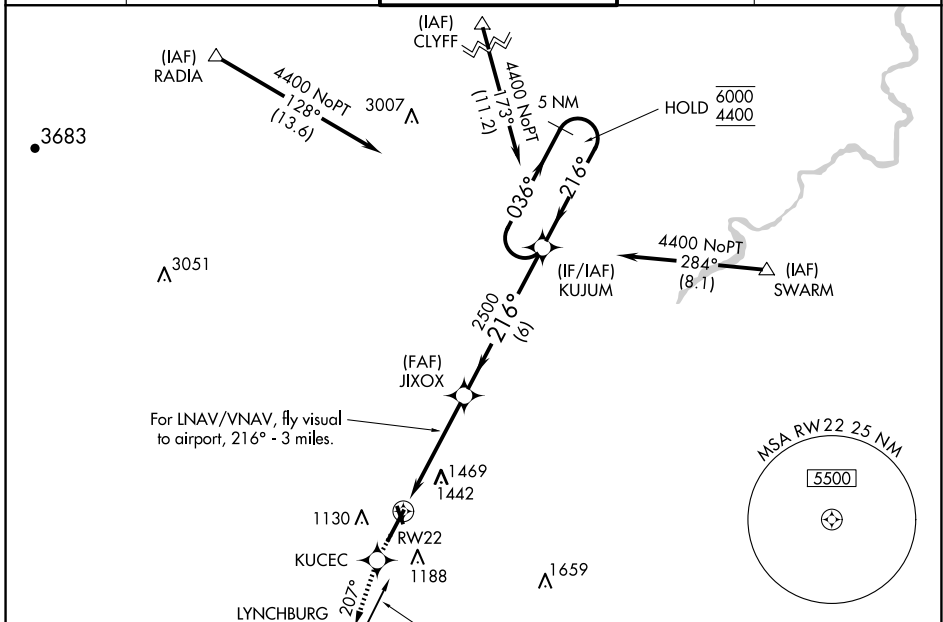
LYNCHBURG RGNL/PRESTON GLENN FLD (LYH)

RNP APCH.

▼ For uncompensated Baro-VNAV systems, LNAV/VNAV NA below -16°C or above 47°C. Rwy 22 helicopter visibility reduction below ¾ SM NA. Circling Rwy 17 NA at night.

MISSED APPROACH: Climb to 3000 direct KUCEC and track 207° to LYH VOR/DME and hold, continue climb-in hold to 3000.

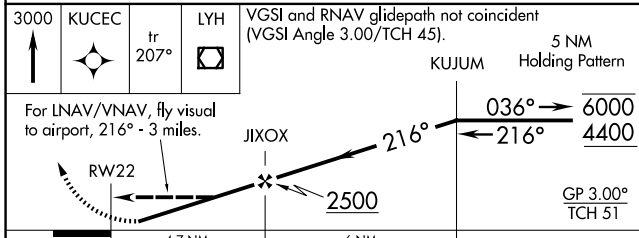
ATIS 119.8	ROANOKE APP CON 135.0 254.325	LYNCHBURG TOWER ★ 127.65 (CTAF) 0 257.8	GND CON 121.9	UNICOM 122.95
----------------------	---	---	-------------------------	-------------------------



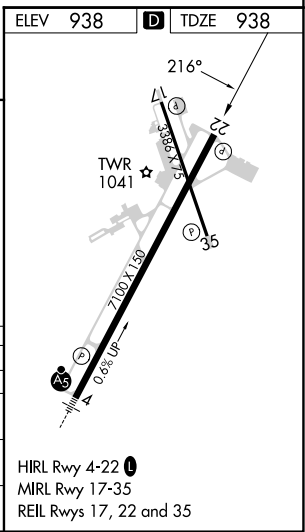
Procedure NA for arrivals at LYH VOR/DME on V16-260 westbound.

For LNAV/VNAV, fly visual to airport, 216° - 3 miles.

For LNAV/VNAV, fly visual to airport, 216° - 3 miles.



CATEGORY	A	B	C	D
LPV DA	1250-1 312 (400-1)			
LNAV/VNAV DA	1939-2	1001 (1100-2)	1939-3	1001 (1100-3)
LNAV MDA	1720-1 782 (800-1)	1720-1 ¼ 782 (800-1 ¼)	1720-2 ¼ 782 (800-2 ¼)	1720-2 ½ 782 (800-2 ½)
CIRCLING	1720-1 782 (800-1)	1780-1 ¼ 842 (900-1 ¼)	1800-2 ½ 862 (900-2 ½)	1800-2 ¾ 862 (900-2 ¾)



NE-3, 20 FEB 2025 to 20 MAR 2025

NE-3, 20 FEB 2025 to 20 MAR 2025