

LOC I-ILG <b>110.3</b>	APP CRS <b>015°</b>	Rwy Idg <b>7012</b> TDZE <b>76</b> Apt Elev <b>80</b>
---------------------------	------------------------	--

# ILS or LOC RWY 1

NEW CASTLE (ILG)

ADF required.

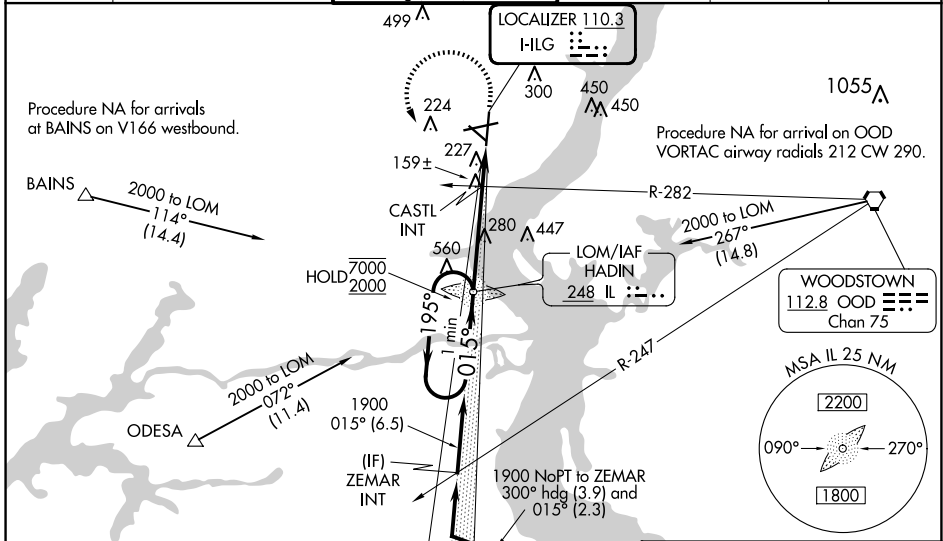
RADAR required to define BLARE.

When local altimeter setting not received, use Philadelphia altimeter setting increase all DA to 330 feet and all MDA 60 feet; increase S-LOC 1 Cats C/D visibility to 1½ SM and Circling visibility Cat C to 1¾ SM, Cat D to 2½ SM; increase CASTL fix minimums S-LOC 1 Cats C/D to 1¾ SM for CASTL fix minimums and Circling Cat D to 2½ SM. For inop ALS increase S-LOC 1 Cat C/D to 1¾ SM for CASTL fix minimums, increase S-LOC 1 Cats C/D visibility to 1¾ SM. For inop ALS when using Philadelphia Intl altimeter setting, increase S-LOC 1 Cat C and D visibility to 1¾ SM; CASTL fix minimums S-LOC 1 Cats C/D to 1¾ SM. \*\*RVR 1800 authorized with use of FD or AP or HUD to DA (NA when using Philadelphia Intl altimeter setting).



**MISSED APPROACH:**  
Climb to 900 then climbing left turn to 2000 direct HADIN LOM and hold.

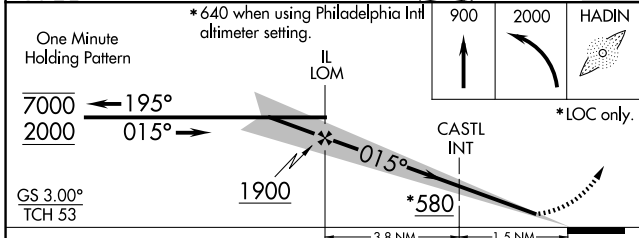
ATIS <b>123.95</b>	PHILADELPHIA APP CON <b>118.35 323.1</b>	WILMINGTON TOWER * <b>126.0 (CTAF) 352.05</b>	GND CON <b>121.7 275.8</b>	CLNC DEL <b>119.95</b>	UNICOM <b>122.95</b>
-----------------------	---	--	-------------------------------	---------------------------	-------------------------



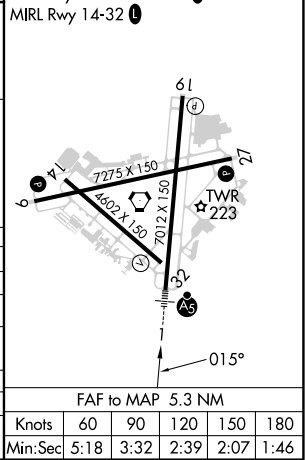
NE-3, 20 FEB 2025 to 20 MAR 2025

NE-3, 20 FEB 2025 to 20 MAR 2025

ELEV 80	TDZE 76
REIL Rwy 9, 19 and 27	
HIRL Rwy 1-19 and 9-27	
MIRL Rwy 14-32	



ELEV 80	TDZE 76
REIL Rwy 9, 19 and 27	
HIRL Rwy 1-19 and 9-27	
MIRL Rwy 14-32	



CATEGORY	A	B	C	D
S-ILS 1**	276/24 200 (200-½)			
S-LOC 1	580/24	504 (500-½)	580/55	504 (500-1)
CIRCLING	580-1	500 (500-1)	600-1½ 520 (600-1½)	800-2¼ 720 (800-2¼)
CASTL FIX MINIMUMS (DUAL VOR RECEIVERS REQUIRED)				
S-LOC 1	480/24	404 (400-½)	480/40	404 (400-¾)
CIRCLING	540-1 460 (500-1)	560-1 480 (500-1)	600-1½ 520 (600-1½)	800-2¼ 720 (800-2¼)

FAF to MAP 5.3 NM					
Knots	60	90	120	150	180
Min:Sec	5:18	3:32	2:39	2:07	1:46