

LOC I-CEF 109.9	APCH CRS 228°	Rwy ldg 11,597 TDZE 241 Arpt Elev 241
---------------------------	-------------------------	--

[USAF]

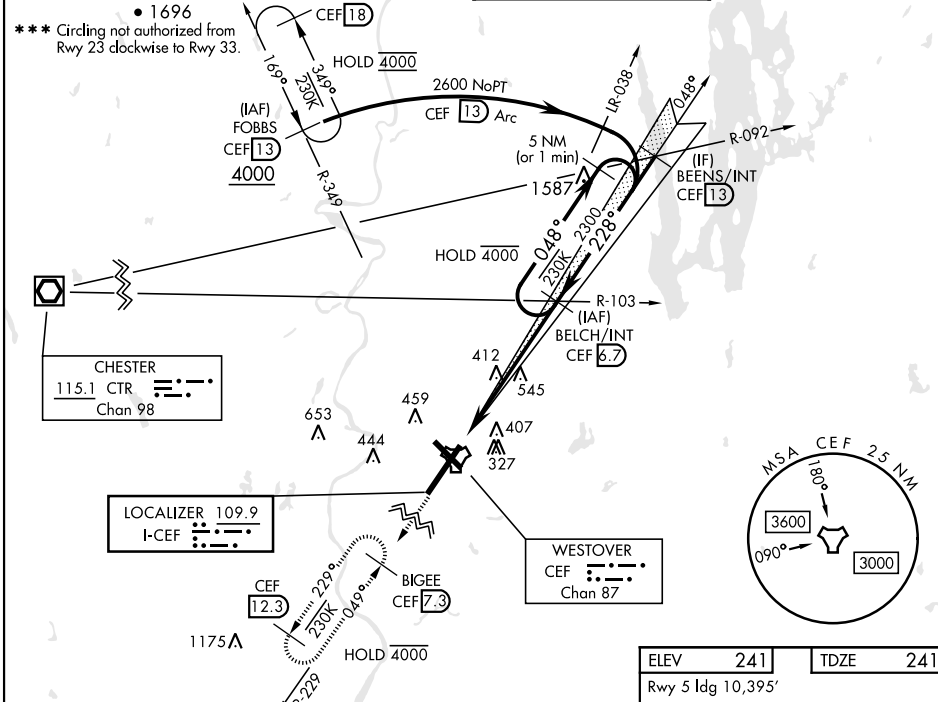
WESTOVER ARB METROPOLITAN (KCEF)

DME required. RADAR or RNAV required for missed apch.
 * When ALS inop, increase RVR to 40 and vis to 3/4 mile.
 ** When ALS inop, increase CAT AB RVR to 55 and vis to 1 mile, CAT CDE vis to 2 miles.



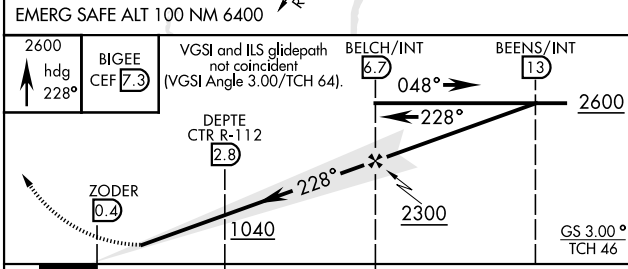
MISSED APPROACH: Climb to 2600 on heading 228° to intercept CEF TACAN R-229 direct BIGEE and hold, continue to climb-in-hold to 2600.

ATIS * 127.525	BRADLEY APP CON 125.35 281.5	TOWER * 134.85 (CTAF) 0 348.75	GND CON 118.35 275.8
--------------------------	--	---	--------------------------------

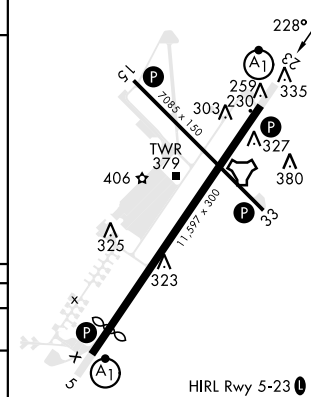


NE-1, 20 FEB 2025 to 20 MAR 2025

NE-1, 20 FEB 2025 to 20 MAR 2025



ELEV 241	TDZE 241
Rwy 5 ldg 10,395'	



EMERG SAFE ALT 100 NM 6400					
2600 hdg 228°	BIGEE CEF 7.3	VGSI and ILS glidepath not coincident (VGSI Angle 3.00/TCH 64).	BELCH/INT 6.7	BEENS/INT 13	2600
ZODER 0.4	DEPTC CTR R-112 2.8		228°		2300
			048°		2600
			228°		2600
			2300		GS 3.00° TCH 46
			2.4 NM	3.9 NM	
CATEGORY	A	B	C	D	E
S-ILS 23 *	441/24		200	(200-1/2)	
S-LOC 23 **	940/24 699 (700-1/2)		940-1 1/2 699 (700-1/2)		
***	940-1 699 (700-1)		940-2 699 (700-2)	1060-2 819 (900-2 3/4)	1080-3 839 (900-3)

FAF to MAP 6.3 NM					
Knots	60	90	120	150	180
Min:Sec	6:18	4:12	3:09	2:31	2:06