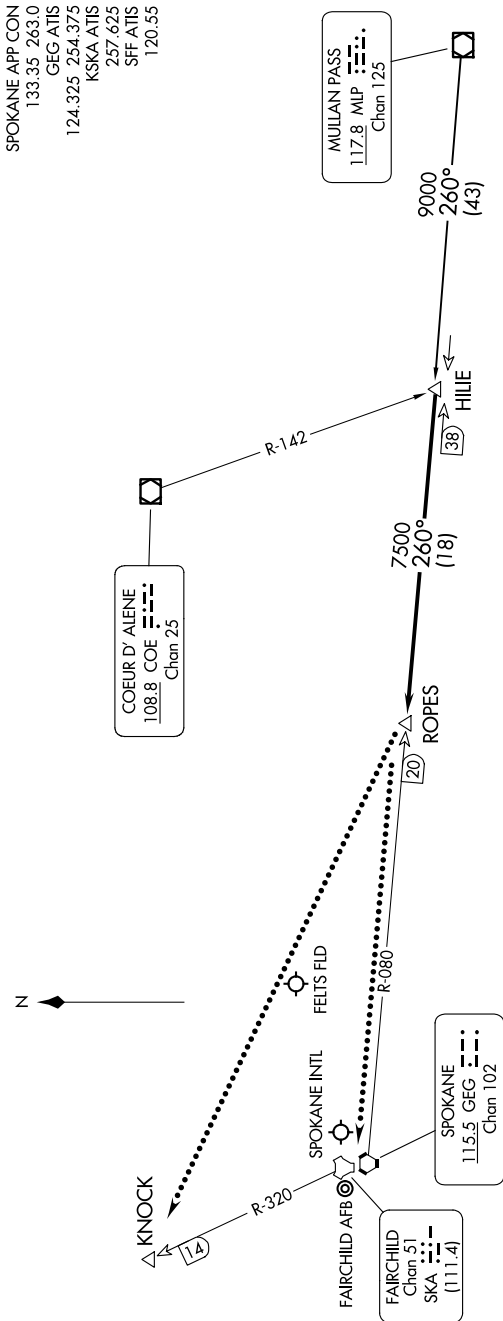


NW-1, 20 FEB 2025 to 20 MAR 2025



NOTE: DME and RADAR required.
NOTE: Chart not to scale.

ARRIVAL ROUTE DESCRIPTION

MULLAN PASS TRANSITION (MLP.HILIE3): From over MLP VOR/DME on MLP R-260 to HILIE. Thence
. From over HILIE on SPOKANE VORTAC (GEG) R-080 to ROPES. Expect RADAR vectors to final approach course.

LOST COMMUNICATIONS

After ROPES:
LANDING SPOKANE INTL or FELTS FLD: Proceed to GEG VORTAC on GEG R-080, maintain last assigned altitude to GEG.
LANDING FAIRCHILD AFB: Proceed to KNOCK direct, maintain last assigned altitude to KNOCK.

NW-1, 20 FEB 2025 to 20 MAR 2025