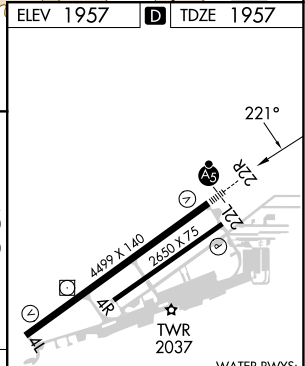
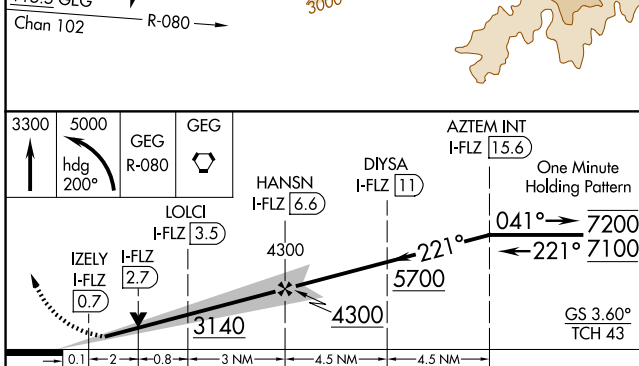
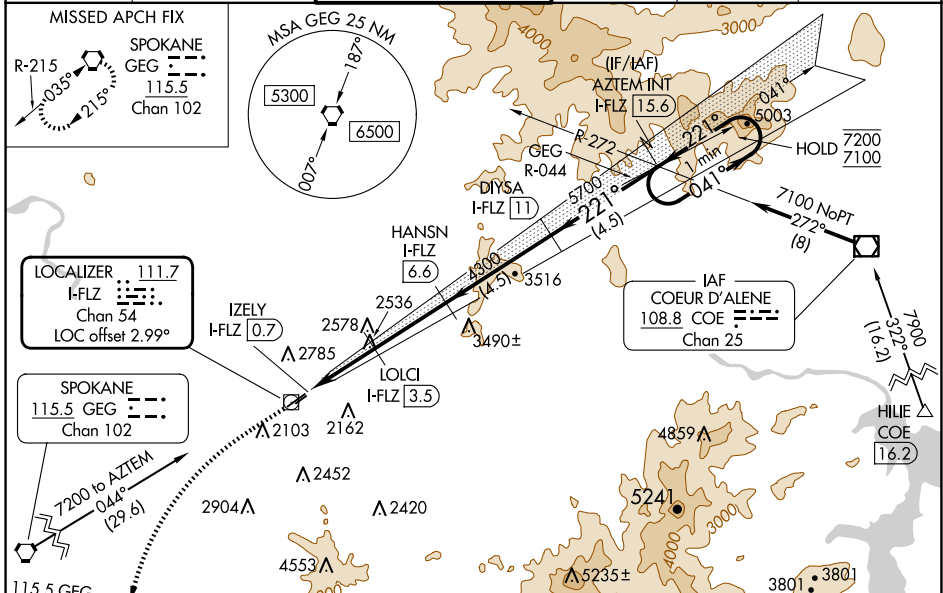


|   |                        |                             |   |
|---|------------------------|-----------------------------|---|
| LOC/DME I-FLZ<br><b>111.7</b><br>Chan <b>54</b> | APP CRS<br><b>221°</b> | Rwy Idg<br>TDZE<br>Apt Elev | <b>4499</b><br><b>1957</b><br><b>1957</b> |
|---|------------------------|-----------------------------|---|

# ILS or LOC RWY 22R

FELTS FLD (S/F)

|   |  |  |  |   |                          |                         |
|---|--|--|--|---|--------------------------|-------------------------|
| DME required.   |  | MALSR  |  | MISSED APPROACH: Climb to 3300 then climbing left turn to 5000 on heading 200° and GEG VORTAC R-080 to GEG VORTAC and hold. |                          |                         |
| <p>▼ Circling NA northwest of Rwy 4L-22R. Circling Rwy 22L NA at night.</p> <p>⚠ Rwy 22R helicopter visibility reduction below 3/4 SM NA. For inop ALS, increase S-ILS Cat A/B/C visibility to 7/8 SM, increase S-LOC Cat A visibility to 1 SM and Cat C visibility to 2 1/2 SM.</p> <p>❄ -16°C</p> |  |  |  |   |                          |                         |
| ATIS<br><b>120.55</b>   | SPOKANE APP CON<br><b>133.35 263.0</b> | FELTS TOWER ★<br><b>132.5 (CTAF) 239.025</b> |  | GND CON<br><b>121.7</b>   | CLNC DEL<br><b>121.7</b> | UNICOM<br><b>122.95</b> |



| CATEGORY  | A                             | B                             | C                             | D  |
|-----------|-------------------------------|-------------------------------|-------------------------------|----|
| S-ILS 22R | 2257-1/2 300 (300-1/2)        |                               |                               | NA |
| S-LOC 22R | 2800-3/4                      | 843 (900-3/4)                 | 2800-1 7/8<br>843 (900-1 7/8) | NA |
| CIRCLING  | 2800-1 1/4<br>843 (900-1 1/4) | 2800-1 1/2<br>843 (900-1 1/2) | 3100-3<br>1143 (1200-3)       | NA |

|             |                 |
|-------------|-----------------|
| ELEV 1957   | TDZE 1957       |
| REIL Rwy 4L | MIRL Rwy 4L-22R |

NW-1, 20 FEB 2025 to 20 MAR 2025

NW-1, 20 FEB 2025 to 20 MAR 2025