

QUANTICO, VIRGINIA

# RNAV (GPS) RWY 2

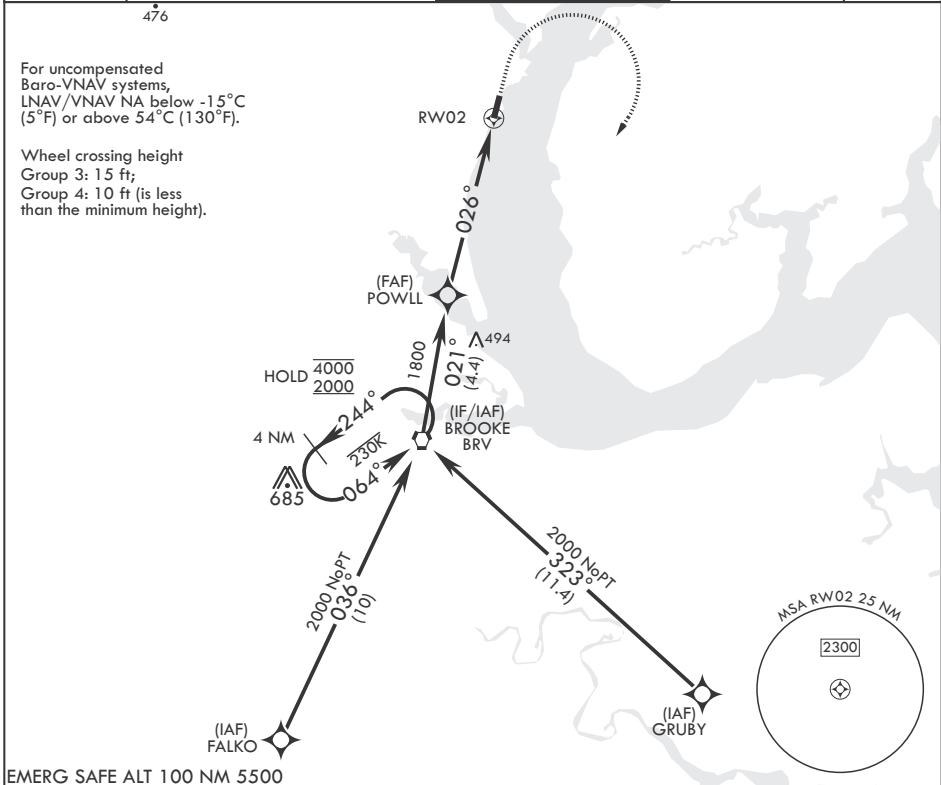
APCH CRS	Rwy Idg	4250
026°	TDZE	9
	Arprt Elev	10

-(USN)

QUANTICO MCAF (TURNER FLD) (KNYG)

RNP APCH	MISSED APPROACH: Climb to 600, then climbing right turn to 2000 direct BRV VORTAC and hold.
* Circling not authorized W of Rwy 2-20.	

ATIS*	POTOMAC APP CON/DEP CON	TOWER*	GND CON	ASR
263.15	128.525 306.925	118.6 (CTAF) 0 360.2	121.75 348.7	



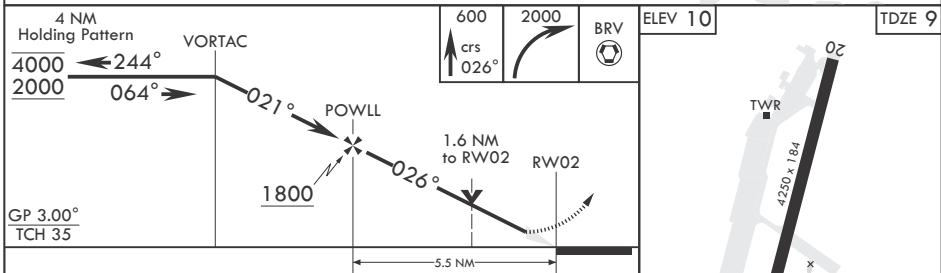
For uncompensated Baro-VNAV systems, LNAV/VNAV NA below -15°C (5°F) or above 54°C (130°F).

Wheel crossing height  
Group 3: 15 ft;  
Group 4: 10 ft (is less than the minimum height).

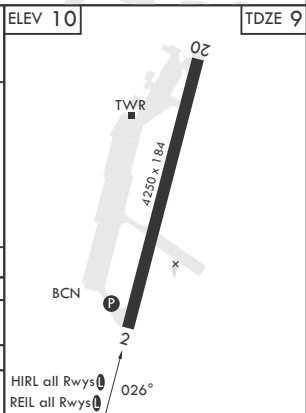
NE-3, 20 FEB 2025 to 20 MAR 2025

NE-3, 20 FEB 2025 to 20 MAR 2025

EMERG SAFE ALT 100 NM 5500



CATEGORY	A	B	C	D
LNAV/VNAV DA	429-1 <sup>1</sup> / <sub>8</sub> 420 (500-1 <sup>1</sup> / <sub>8</sub> )	440-1 <sup>1</sup> / <sub>4</sub> 431 (500-1 <sup>1</sup> / <sub>4</sub> )	448-1 <sup>1</sup> / <sub>4</sub> 439 (500-1 <sup>1</sup> / <sub>4</sub> )	459-1 <sup>3</sup> / <sub>8</sub> 450 (500-1 <sup>3</sup> / <sub>8</sub> )
LNAV MDA	560-1 551 (600-1)	660-1 650 (700-1)	700-2 690 (700-2)	551 (600-1 <sup>3</sup> / <sub>8</sub> ) 730 (800-2 <sup>1</sup> / <sub>4</sub> )
<b>C</b> CIRCLING*	560-1 550 (600-1)	660-1 650 (700-1)	700-2 690 (700-2)	740-2 <sup>1</sup> / <sub>4</sub> 730 (800-2 <sup>1</sup> / <sub>4</sub> )



QUANTICO, VIRGINIA  
Amdt 4 03NOV22

38°30'N - 77°18'W

QUANTICO MCAF (TURNER FLD) (KNYG)

# RNAV (GPS) RWY 2