

# WIPOR THREE ARRIVAL (RNAV)

NE-1, 20 FEB 2025 to 20 MAR 2025

## ARRIVAL ROUTE DESCRIPTION

**ALBANY TRANSITION (ALB.WIPOR3):**

**HANCOCK TRANSITION (HNK.WIPOR3):**

**HINGZ TRANSITION (HINGZ.WIPOR3):**

From WIPOR on track 142° to ORW VOR/DME, then on track 129° to SAUGY.

Landing KPVD Rwys 5, 34: From SAUGY on track 129° to LAFAY, then on track 129°.

Expect radar vectors to final approach course.

Landing KPVD Rwys 16, 23: From SAUGY on track 055° to WAWIK, then on track 049° to SEABE.

Then on track 047° to NOSUH, then on track 047°. Expect radar vectors to final approach course.

Landing KOGU, KUUU, KEWB, all rwys: From WIPOR on track 142° to ORW VOR/DME, then on

track 129° to SAUGY, then on track 129° to LAFAY, then on track 129°. Expect radar vectors to

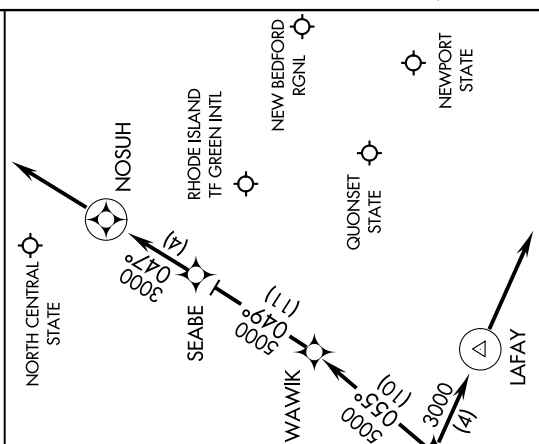
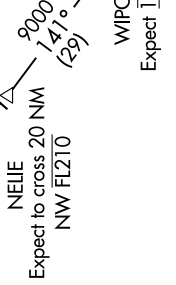
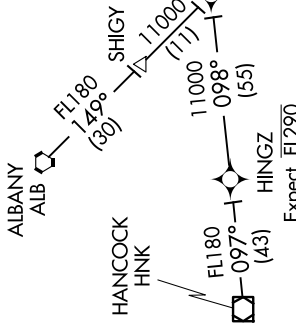
destination airport and final approach course.

Landing KSFZ all rwys: From WIPOR on track 142° to ORW VOR/DME, then on track 129° to SAUGY,

then on track 055° to WAWIK, then on track 049° to SEABE, then on track 047° to NOSUH, then on

track 047°. Expect radar vectors to final approach course.

PROVIDENCE APP CON★  
123.675 244.875  
EWB ATIS  
126.85  
PVD D-ATIS  
124.2



NOTE: RADAR required.  
NOTE: RNAV 1.  
NOTE: DME/DME/IRU or GPS required.

NOTE: Chart not to scale.

# WIPOR THREE ARRIVAL (RNAV)

NE-1, 20 FEB 2025 to 20 MAR 2025