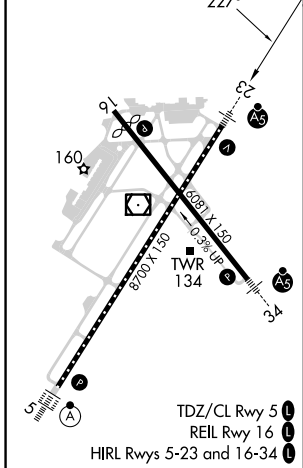
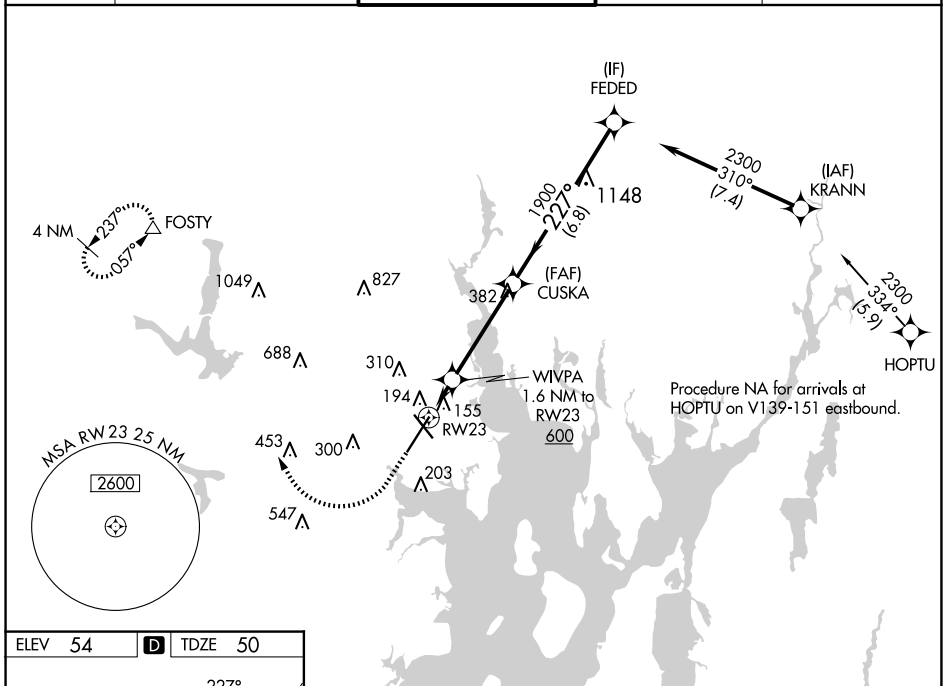


WAAS CH 93823 W23A	APP CRS 227°	Rwy Idg TDZE Apt Elev	8700 50 54
--	------------------------	-----------------------------	---------------------------------------

RNAV (GPS) Y RWY 23

RHODE ISLAND TF GREEN INTL (PVD)

RNP APCH - GPS.		MALSRL	MISSED APPROACH: Climb to 1700 then climbing right turn to 2500 direct FOSTY and hold.	
<p>▼ For uncompensated Baro-VNAV systems, LNAV/VNAV NA below -16°C or above 54°C. Inop ALS, increase LNAV Cats C/D visibility to RVR 6000. *RVR 1800 authorized with use of FD or AP or HUD to DA.</p>				
D-ATIS 124.2	PROVIDENCE APP CON * 123.675 244.875	PROVIDENCE TOWER * 120.7 (CTAF) 257.8	GND CON 121.9 348.6	CLNC DEL 126.65 348.6



ELEV 54	D TDZE 50	<p>1700 2500 FOSTY</p> <p>↑ ↪ △</p> <p>VGSI and RNAV glidepath not coincident (VGSI Angle 3.00/TCH 41).</p>			
		<p>WIVPA 1.6 NM to RWY 23</p> <p>CUSKA 1900</p> <p>FEDED 2300</p> <p>GP 3.00° TCH 51</p>			
<p>1.6 NM</p> <p>4.1 NM</p> <p>6.8 NM</p>					
CATEGORY	A	B	C	D	
LPV DA *	250/24		200 (200-½)		
LNAV/VNAV DA	355/24		305 (400-½)		
LNAV MDA	460/24	410 (500-½)		460/40	410 (500-¾)
C CIRCLING	560-1	640-1	640-1½		860-2½
	506 (600-1)	586 (600-1)	586 (600-1½)		806 (900-2½)

NE-1, 20 FEB 2025 to 20 MAR 2025

NE-1, 20 FEB 2025 to 20 MAR 2025