

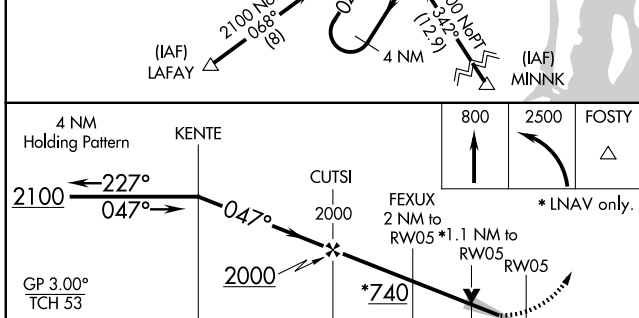
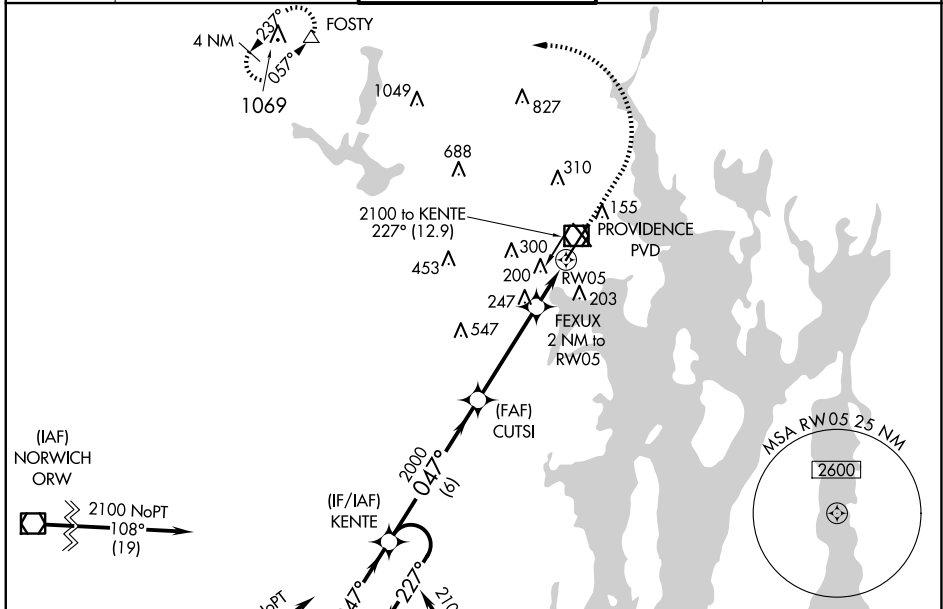
WAAS CH 86218 W05A	APP CRS 047°	Rwy Idg TDZE Apt Elev	8700 53 54
--	------------------------	-----------------------------	---------------------------------------

RNAV (GPS) RWY 5

RHODE ISLAND TF GREEN INTL (PVD)

<p>▼ For uncompensated Baro-VNAV systems, LNAV/VNAV NA below -16°C (3°F) or above 54°C (130°F). DME/DME RNP-0.3 NA. When tower closed: increase LPV, LNAV/VNAV all Cats and LNAV Cats A and B visibilities to ¾ SM, and LNAV Cats C and D visibility to 1 SM. When control tower closed: For inop ALS, increase LNAV Cats C and D visibility to 1¾ SM.</p>	<p>ALSF-2</p>	<p>MISSED APPROACH: Climb to 800 then climbing left turn to 2500 direct FOSTY and hold.</p>
---	---------------	---

D-ATIS 124.2	PROVIDENCE APP CON * 123.675 244.875	PROVIDENCE TOWER * 120.7 (CTAF) 257.8	GND CON 121.9 348.6	CLNC DEL 126.65 348.6
------------------------	--	---	-------------------------------	---------------------------------



4 NM Holding Pattern	KENTE		2000	FEXUX 2 NM to RW05 *1.1 NM to RW05	FOSTY
2100	← 227°	047° →	2000	*740	
GP 3.00° TCH 53	← 047°		2000	→ 047°	
	← 6 NM		← 4 NM	← 0.9 NM	← 1.1 NM
CATEGORY	A	B	C	D	
LPV DA		253/18	200 (200-½)		
LNAV/VNAV DA		361/24	308 (400-½)		
LNAV MDA	460/24	407 (500-½)	460/40	407 (500-¾)	
C CIRCLING	560-1 506 (600-1)	640-1 586 (600-1)	640-1½ 586 (600-1½)	860-2½ 806 (900-2½)	

