

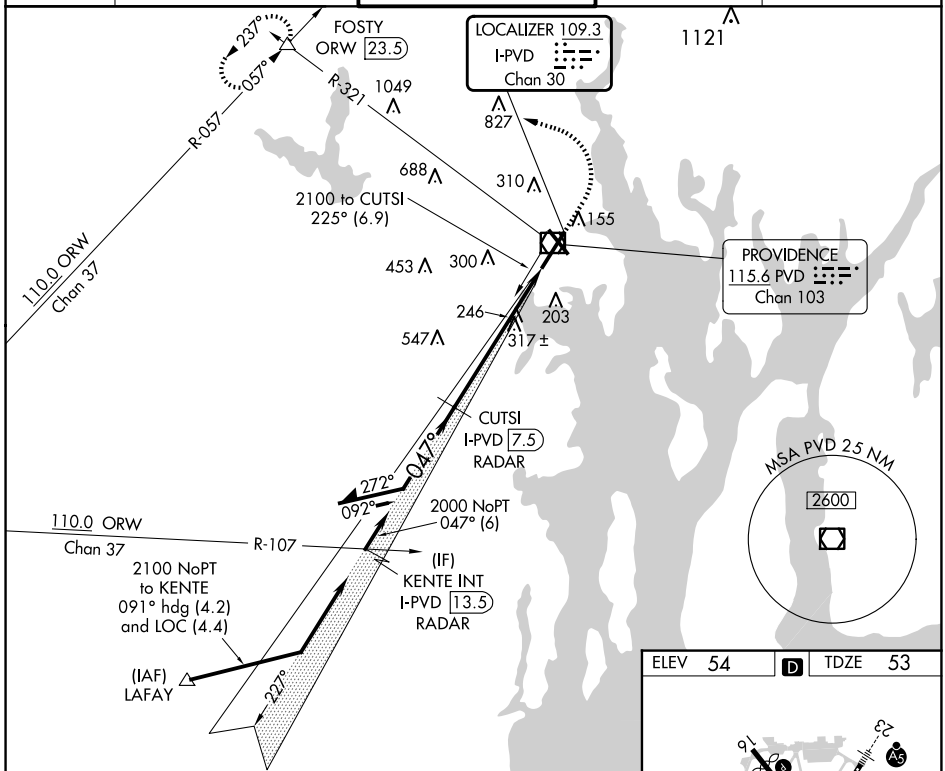
LOC/DME I-PVD <b>109.3</b> Chan 30	APP CRS <b>047°</b>	Rwy Idg <b>8700</b> TDZE <b>53</b> Apt Elev <b>54</b>
--	------------------------	---

# ILS RWY 5 (CAT II & III)

RHODE ISLAND TF GREEN INTL (PVD)

<p><b>Procedure NA</b> when control tower closed.</p>	<p>ALSF-2</p>	<p>MISSED APPROACH: Climb to 800 then climbing left turn to 2500 on heading 270° and PVD VOR/DME R-321 to FOSTY INT/ORW 23.5 DME and hold.</p>
---	---------------	--

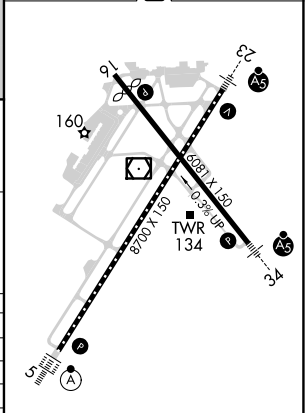
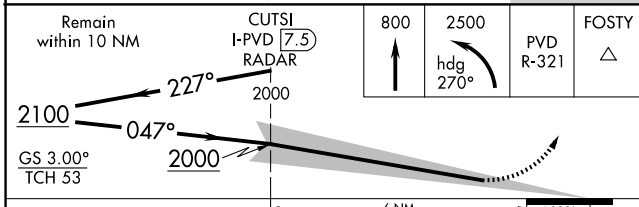
D-ATIS <b>124.2</b>	PROVIDENCE APP CON * <b>123.675 244.875</b>	PROVIDENCE TOWER * <b>120.7 (CTAF) 257.8</b>	GND CON <b>121.9 348.6</b>	CLNC DEL <b>126.65 348.6</b>
------------------------	--	---	-------------------------------	---------------------------------



NE-1, 20 FEB 2025 to 20 MAR 2025

NE-1, 20 FEB 2025 to 20 MAR 2025

ELEV 54	<b>D</b>	TDZE 53
---------	----------	---------



CATEGORY	A	B	C	D
S-ILS 5	CAT II RA 106/12 100 DA 153			
S-ILS 5	CAT IIIa RVR 700			
S-ILS 5	CAT IIIb RVR 600			
S-ILS 5	CAT IIIc NA			

## CATEGORY II & III ILS - SPECIAL AIRCREW & AIRCRAFT CERTIFICATION REQUIRED

TDZ/CL Rwy 5 **1**  
 REIL Rwy 16 **1**  
 HIRL Rwy 5-23 and 16-34 **1**