

24305

PATUXENT RIVER NAS (TRAPNELL FIELD) (KNHK)

# SWABY NINE DEPARTURE (SWABY9.SWABY)

[USN]

PATUXENT RIVER, MARYLAND

Knots	60	120	180	240	300	360
V/V(fpm)	310	620	930	1240	1550	1860

ATC Climb Rate to 9000

●285  
 ATIS 322.425  
 CLNC DEL 135.2 316.125  
 GND CON 120.6 336.4  
 TOWER 123.7 343.65  
 APP/DEP CON ★ 121.0 250.3

Departure Rwy 2-20 not authorized.  
 Minimum filing alt 10,000.

**NAS PATUXENT RIVER**  
 Chan 39 (Y) NHK

N38°16.86'  
 W76°24.64'

**GORDONSVILLE**  
 115.6 GVE   
 Chan 103

N38°00.82'  
 W78°09.18'

**SWABY**  
 N37°52.38'  
 W76°31.20'  
 9000

**HOPEWELL**  
 112.0 HPW   
 Chan 57

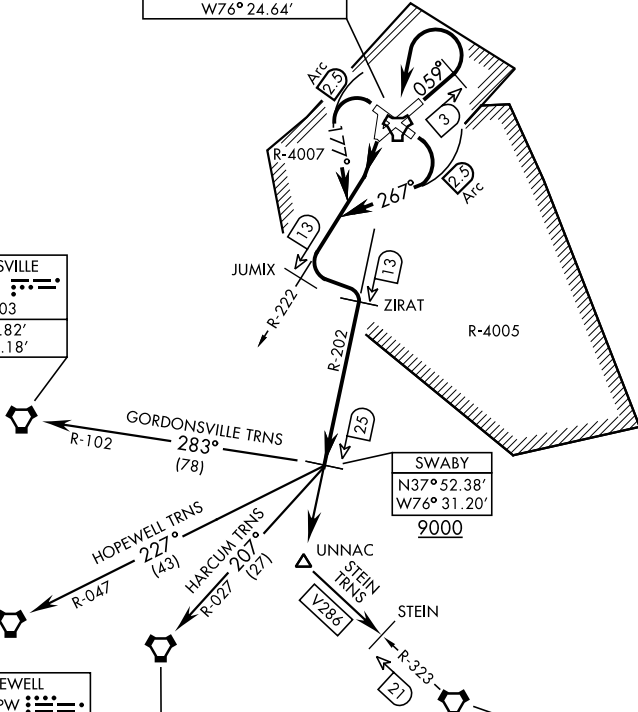
N37°19.73'  
 W77°06.96'

**HARCUM**  
 108.8 HCM   
 Chan 25

N37°26.92'  
 W76°42.68'

**CAPE CHARLES**  
 112.2 CCV   
 Chan 59

N37°20.85'  
 W75°59.86'



**ATC BRIEF  
 REQUIRED**  
 135.2 316.125

Note: Chart not to scale  
 (NARRATIVE ON FOLLOWING PAGE)

## SWABY NINE DEPARTURE (SWABY9.SWABY)

PATUXENT RIVER, MARYLAND

Orig 02DEC21

PATUXENT RIVER NAS (TRAPNELL FIELD) (KNHK)

NE-3, 20 FEB 2025 to 20 MAR 2025

NE-3, 20 FEB 2025 to 20 MAR 2025