

PATUXENT RIVER, MARYLAND

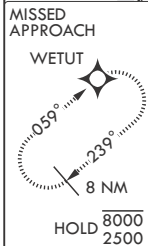
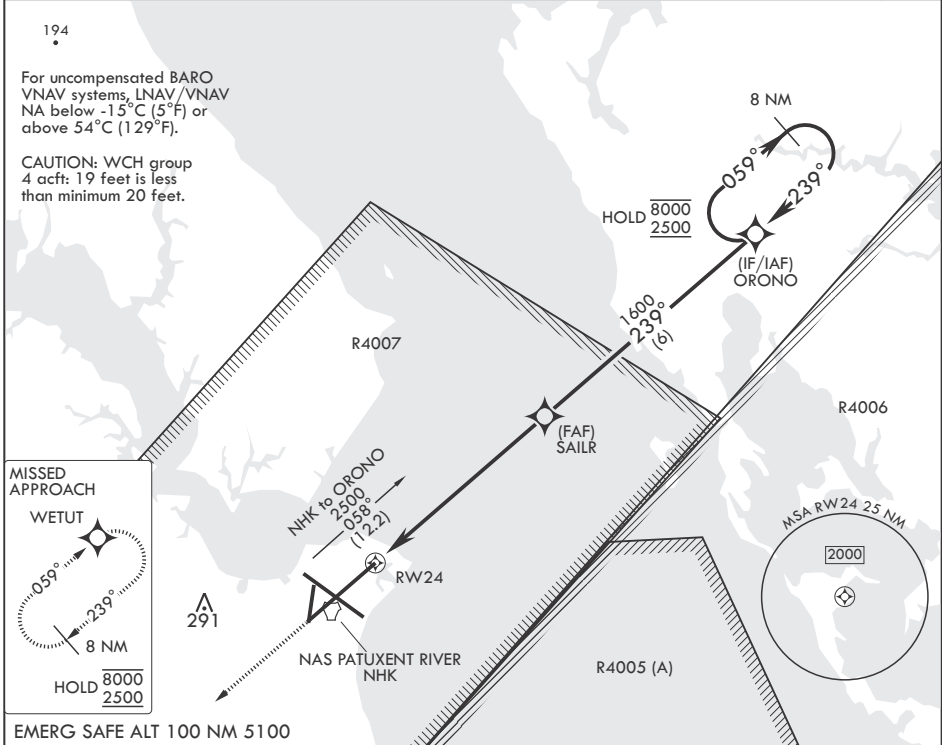
RNAV (GPS) RWY 24

APCH CRS	Rwy Idg	11,799
239°	TDZE	20
	Arprt Elev	39

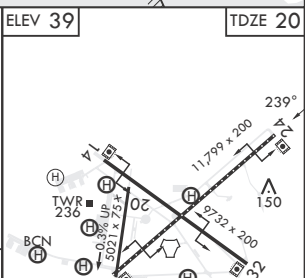
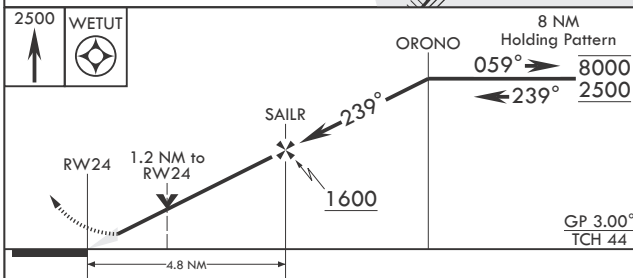
(USN) PATUXENT RIVER NAS (TRAPNELL FLD) (KNHK)

RNP APCH	MISSED APPROACH: Climb to 2500 direct WETUT and hold.
----------	---

ATIS 322.425	APP CON/DEP CON* 121.0 250.3	TOWER 123.7 343.65	GND CON 120.6 336.4	CLNC DEL 135.2 316.125	ASR/PAR
-----------------	---------------------------------	-----------------------	------------------------	---------------------------	---------



EMERG SAFE ALT 100 NM 5100



CATEGORY	A	B	C	D	E
LNAV/VNAV DA	308- ⁷ / ₈ 288 (300- ⁷ / ₈)	319- ⁷ / ₈ 299 (300- ⁷ / ₈)	327- ⁷ / ₈ 307 (300- ⁷ / ₈)	338- ⁷ / ₈	318 (300- ⁷ / ₈)
LNAV MDA	440-1	420 (500-1)	440-1 ¹ / ₂	420	(500-1 ¹ / ₂)
C CIRCLING	540-1 501 (600-1)	560-1 521 (600-1)	620-1 ¹ / ₂ 581 (600-1 ¹ / ₂)	680-2 641 (700-2)	820-2 ³ / ₄ 781 (800-2 ³ / ₄)

HIRL Rwsy 6-24, 14-32
TDZL/CL Rwy 6

PATUXENT RIVER, MARYLAND
Amdt 3 07SEP23

38°17'N - 76°25'W PATUXENT RIVER NAS (TRAPNELL FLD) (KNHK)

RNAV (GPS) RWY 24

NE-3, 20 FEB 2025 to 20 MAR 2025

NE-3, 20 FEB 2025 to 20 MAR 2025