

PATUXENT RIVER, MARYLAND

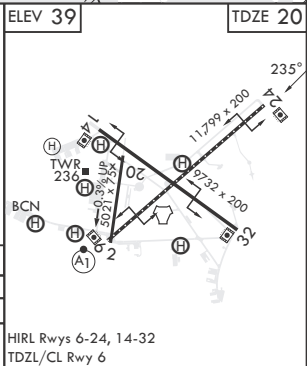
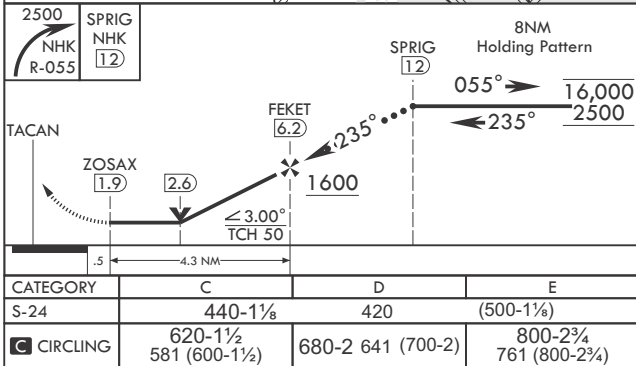
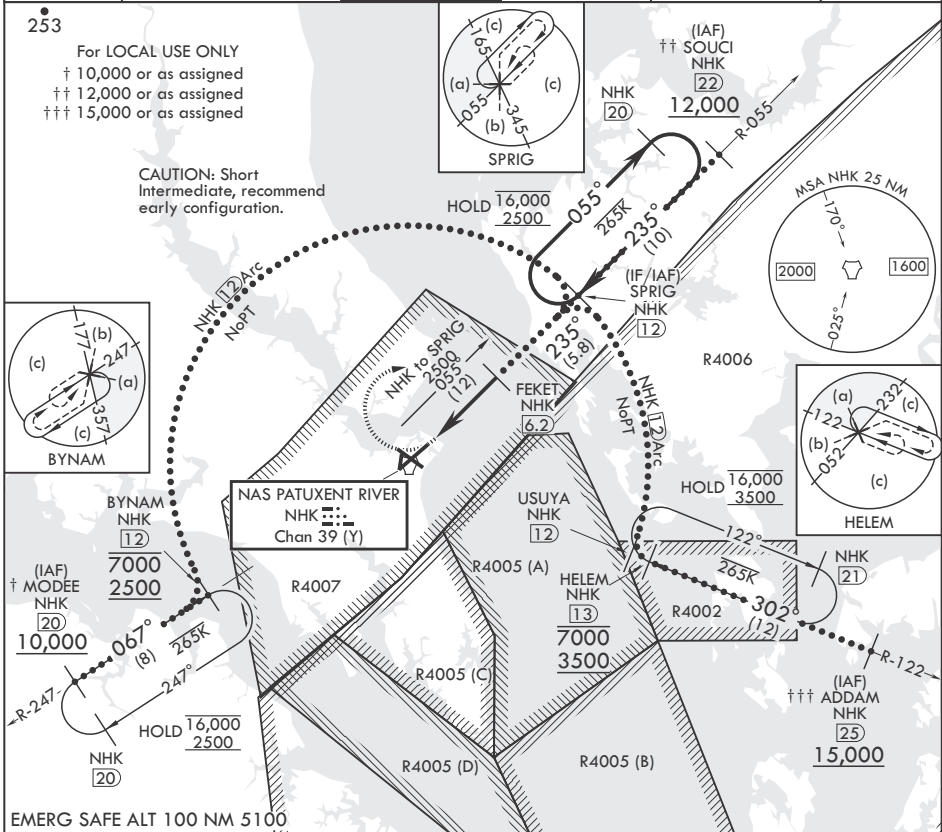
# HI-TACAN Y RWY 24

TACAN NHK Chan 39 (Y)	APCH CRS 235°	Rwy ldg TDZE 20	11,799
		Arprt Elev 39	

(USN) PATUXENT RIVER NAS (TRAPNELL FLD) (KNHK)

**▽** MISSED APPROACH: Climbing right turn to 2500 and intercept NHK TACAN R-055 to SPRIG and hold.

ATIS 322.425	APP CON/DEP CON* 121.0 250.3	TOWER 123.7 343.65	GND CON 120.6 336.4	CLNC DEL 135.2 316.125	ASR/PAR
--------------	------------------------------	--------------------	---------------------	------------------------	---------



PATUXENT RIVER, MARYLAND

38°17'N - 76°25'W PATUXENT RIVER NAS (TRAPNELL FLD) (KNHK)

Orig 02DEC21

# HI-TACAN Y RWY 24

NE-3, 20 FEB 2025 to 20 MAR 2025

NE-3, 20 FEB 2025 to 20 MAR 2025