

VORTAC ORF <b>116.9</b> Chan <b>116</b>	APP CRS <b>129°</b>	Rwy ldg TDZE <b>25</b> Apt Elev <b>27</b>	<b>4301</b>
---	------------------------	---	-------------

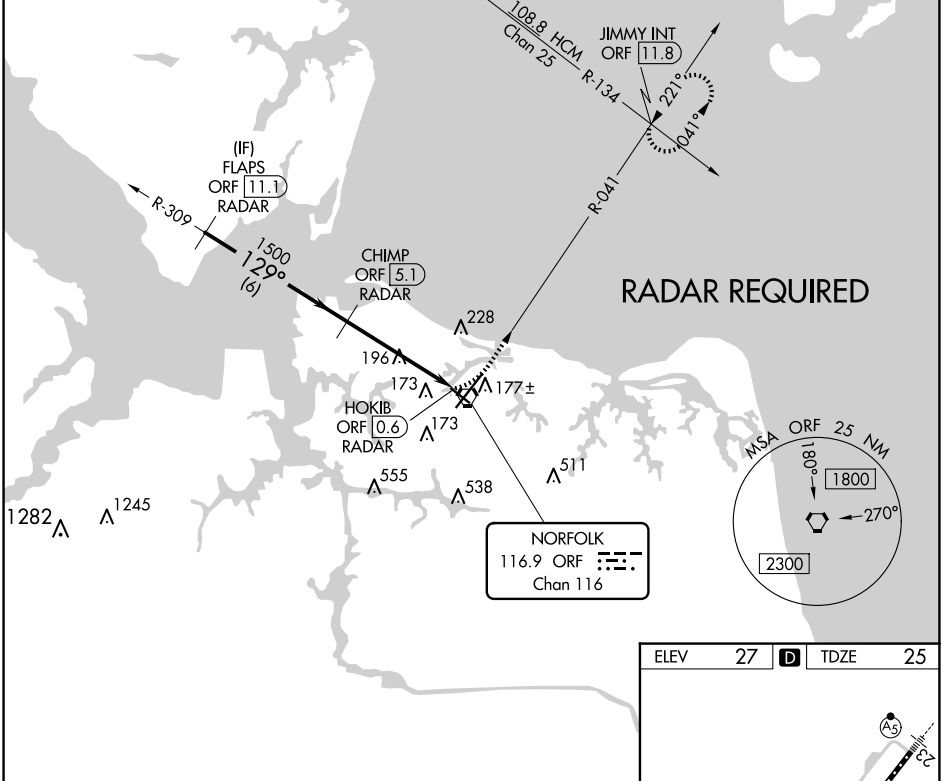
# VOR RWY 14

NORFOLK INTL (ORF)

**▽** Rwy 14 helicopter visibility reduction below ¾ SM NA.  
**▲** DME required.

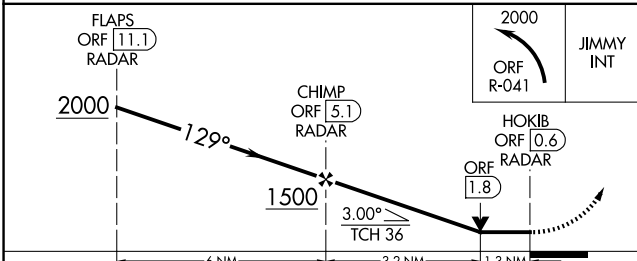
MISSED APPROACH: Climbing left turn to 2000 on ORF VORTAC R-041 to JIMMY INT/ORF 11.8 DME and hold.

ATIS <b>127.15</b>	NORFOLK APP CON <b>118.9 353.7</b>	NORFOLK TOWER <b>120.8 257.8</b>	GND CON <b>121.9</b>	CLNC DEL <b>118.5</b>
-----------------------	---------------------------------------	-------------------------------------	-------------------------	--------------------------

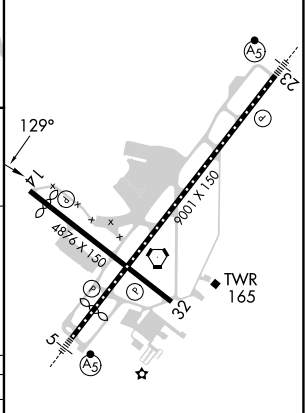


NE-3, 20 FEB 2025 to 20 MAR 2025

NE-3, 20 FEB 2025 to 20 MAR 2025



ELEV 27	<b>D</b>	TDZE 25
---------	----------	---------



CATEGORY	A	B	C	D
S-14	460-1	435 (500-1)	460-1¼	435 (500-1¼)
<b>C</b> CIRCLING	480-1 453 (500-1)	540-1 513 (600-1)	540-1½ 513 (600-1½)	900-2¾ 873 (900-2¾)

REIL Rwy 14 and 32  
HIRL Rwy 5-23  
MIRL Rwy 14-32