


WAAS CH 86812 W24A	APP CRS 245°	Rwy Idg 7500 TDZE 730 Apt Elev 732
--	------------------------	---

RNAV (GPS) RWY 24

ERIE INTL/TOM RIDGE FLD (ERI)

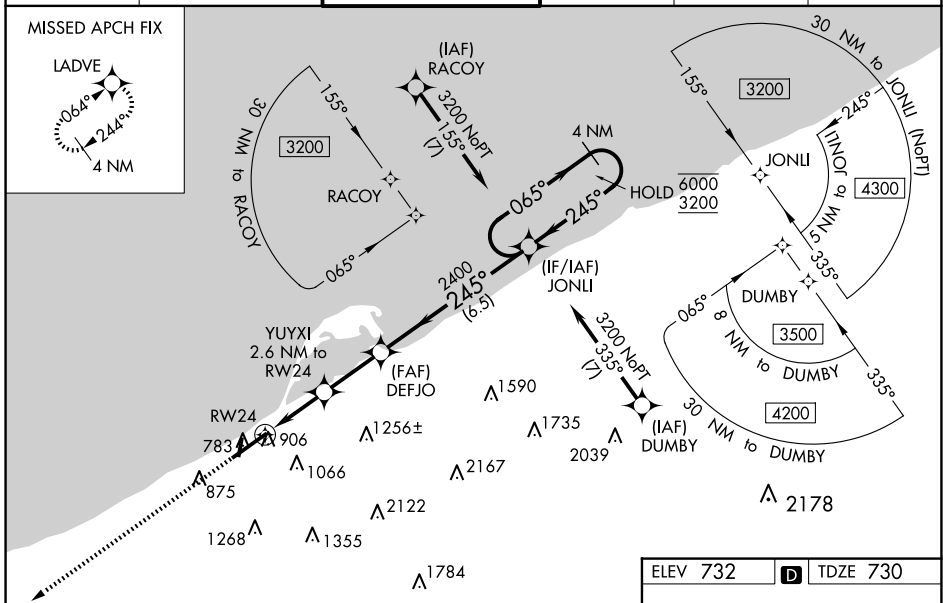
RNP APCH - GPS.

⚠ Circling to Rwy 2 and 20 NA at night. Circling NA southeast of Rwy 6-24.
⚠ For uncompensated Baro-VNAV systems, LNAV/VNAV NA below -15°C or above 54°C. For inop ALS increase LNAV/VNAV all Cats visibility to RVR 6000.

MALSRS 

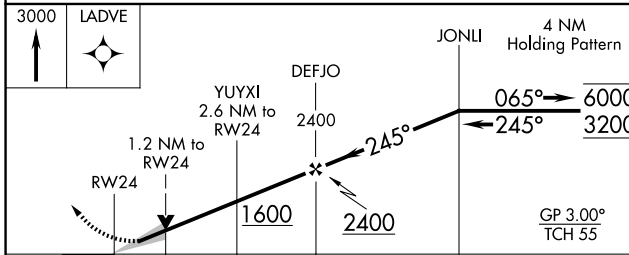
MISSED APPROACH:
Climb to 3000 direct LADVE and hold.


ATIS 120.35	BUFFALO APP CON* 121.0 257.8	ERIE TOWER* 118.1 (CTAF) 0 257.8	GND CON 121.9	CLNC DEL 126.8	UNICOM 122.95
-----------------------	--	---	-------------------------	--------------------------	-------------------------



NE-4, 20 FEB 2025 to 20 MAR 2025

NE-4, 20 FEB 2025 to 20 MAR 2025





ELEV 732  TDZE 730

TWR 797

03500 x 1500

8420 x 150

MALSRS 

CATEGORY	A	B	C	D
LPV DA		942/24	212 (300-½)	
LNAV/VNAV DA		1146/40	416 (500-¾)	
LNAV MDA	1160/24	430 (500-½)	1160/40	430 (500-¾)
 CIRCLING	1160-1 428 (500-1)	1200-1 468 (500-1)	1200-1½ 468 (500-½)	1340-2 608 (700-2)

HIRL Rwy 6-24 

MIRL Rwy 2-20 

ERIE INTL/TOM RIDGE FLD (ERI)
RNAV (GPS) RWY 24